

# FACT BOOK

## 2005-2006

UNIVERSITY  WISCONSIN

COLLEGES

The freshman/sophomore UW campuses



## COLLEGES

The freshman/sophomore UW campuses

THE UNIVERSITY OF WISCONSIN COLLEGES'  
FACT BOOK 2005-2006  
(1<sup>st</sup> Edition)

The University of Wisconsin Colleges  
Central Administrative Offices  
780 Regent Street, Suite 130  
Madison, Wisconsin 53715 – 2635

A publication of the Office of Academic Affairs  
of the University of Wisconsin Colleges.

January 2006

**University of Wisconsin Colleges**

Introduction ..... 1  
 About the UW Colleges ..... 2  
 Contact Information ..... 3  
 Fast Facts ..... 4  
 Definitions and Data Sources ..... 5

**Student Information**

**Student Enrollments**

10 Year Summary of UW Colleges Fall Semester ..... 7  
 includes headcount; fte; new freshmen  
 5 Year Summaries of UW Colleges Headcount ..... 8-12  
 by status and academic level; gender and course load; race; age range;  
 high school rank and gender  
 1 Year Campus Comparison ..... 13

**New Freshman Retention**

5 Year New Freshman Retention Summaries ..... 14-18  
 by gender; race; course load; age range; high school rank

**Degrees Conferred**

5 Year Summary of Associate of Arts  
 and Science Degrees Conferred..... 19  
 by gender and age range

**Student Transfer**

Transfer Performance and Persistence ..... 20  
 Top 25 Transfer Majors by Campus ..... 21

**Curriculum and Instruction**

**Course Analyses**

Top 25 UW Colleges Courses by Enrollment ..... 22  
 5 Year Summary of 10th Day Enrolled Student Credit Hours  
 by Academic Level ..... 23  
 5 Year Summary of Average Class Size by Campus ..... 24

**Instructional Resources**

Library Facts and Figures ..... 25

**Continuing Education**

3 Year Summary of Program Information by Campus ..... 26  
 Education Enrollments by Campus ..... 27

**Alternative Modes of Instruction**

Alternative Modes of Instruction in the UW Colleges ..... 28  
 3 Year Enrollment Summary - Credit Instruction ..... 29

**Youth Options Program**

3 Year Enrollment Summary ..... 30

**Faculty and Instructional Academic Staff**

5 Year Summary of Instructional Personnel ..... 31  
 by type, gender, minority status and degree preparation  
 Fall 2005 UW Colleges Instructional Personnel Summary ..... 32

**Finance**

**Budget Analyses**

Budgeted Revenue by Source of Funds - All Budgets ..... 33  
 Budgeted Revenue by Source of Funds - General Academic  
 Program Operations Budget ..... 34  
 Budget by Classification ..... 35  
 Budgeted Expenditures by Program Area ..... 36

**Municipal Support**

Ownership and Insured Value of Facilities ..... 37  
 Budgeted City/County Expenditures ..... 38

**Student Cost to Attend**

5 Year Tuition and Fee Summary ..... 39

**Student Financial Aid**

2004-2005 Financial Aid by Campus ..... 40  
 2 Year Summary of Financial Aid Awards by Type ..... 41

**Campus Profiles**

UW-Baraboo/Sauk County .....	42
UW-Barron County .....	43
UW-Fond du Lac .....	44
UW-Fox Valley .....	45
UW-Manitowoc .....	46
UW-Marathon County .....	47
UW-Marinette .....	48
UW-Marshfield/Wood County .....	49
UW-Richland .....	50
UW-Rock County .....	51
UW-Sheboygan .....	52
UW-Washington County .....	53
UW-Waukesha .....	54

## Introduction

Welcome to the *2005-2006 UW Colleges' Fact Book*, which is a new publication of the University of Wisconsin Colleges. The data analysis and summary information shared in this annual publication provides a comprehensive overview of the people, programs, and partnerships associated with the mission of the UW Colleges. In addition to an institutional profile, *The Fact Book* is an official source of quantitative facts and figures for internal audiences within the Colleges and the University of Wisconsin System. People outside of the institution may also benefit from this publication for such purposes as grant proposals, fundraising, legislative advocacy, special projects, and collaborative initiatives.

The content for *The UW Colleges' Fact Book* is drawn from a variety of sources. For instance, some sections of this edition, such as student enrollments, are based upon the most current figures available from the fall 2005 semester. In other instances, information is drawn from documents that are most current by reflecting what occurred during the 2003-2004 academic year. Please take note of the definitions, time frames, and footnotes listed when reviewing each section and when making comparisons or drawing conclusions on your own. Electronic updates to this publication will occur as available and a complete new edition of *The Fact Book* will be published annually each fall semester.

As with any new project, it takes a large team of people providing input and assistance on all phases including content, layout, and editing. We express our sincere appreciation to the following personnel and offices for their support and cooperation in developing this first edition of *The Fact Book*.

- ∞ Institutional Research
- ∞ Academic Affairs
- ∞ Administrative Services
- ∞ Continuing Education
- ∞ Distance Education
- ∞ Human Resources
- ∞ Libraries
- ∞ Information Technology
- ∞ University Relations
- ∞ Registrar
- ∞ Financial Aid
- ∞ Campus Deans

We welcome your suggestions on how *The UW Colleges' Fact Book* can be improved. Any questions, comments, or concerns may be directed to Gregg Nettesheim in the Office of Academic Affairs at (608) 263-5991 or at [gnettesh@uwc.edu](mailto:gnettesh@uwc.edu).

Margaret Cleek, Provost and Vice Chancellor for Academic Affairs

**Overview:** The University of Wisconsin Colleges prepares students for success at the baccalaureate level of education by providing the first two years of a liberal arts general education. Each UWC campus offers a transfer curriculum for the baccalaureate degree, professional studies, and a general education Associate of Arts and Science degree. In addition, all campuses have Guaranteed Transfer and Collaborative Degree Programs with UW System baccalaureate degree-granting institutions. Most students live in or near the community where the UWC campus is located and commute to campus. The physical facilities of each UWC campus were constructed and are owned by local county and/or city government. UWC campuses advance the Wisconsin Idea by bringing educational and cultural resources to the people of these communities.

**A Brief History:** The roots of the UW Colleges (UWC) lie in the establishment of off-campus classes and the beginning of extension services in 1907. Early UWC campuses were part of the University of Wisconsin-Madison. Three other UWC campuses were added by institutions of the former Wisconsin State University System. In 1946, the UW Regents developed a policy for local communities to provide buildings for exclusive use by the UW Colleges. With the merger in 1972 of the University of Wisconsin and the State University of Wisconsin to create the University of Wisconsin System, UWC campuses were reunited under the name University of Wisconsin Center System. In 1983 the name of the institution became the University of Wisconsin Centers. The institution's name was changed to the University of Wisconsin Colleges in 1997. Beginning in 1999, collaborative Bachelor's degree programs in areas like business, engineering, nursing, information technology and general studies were negotiated with UW System baccalaureate degree granting campuses. Articulation agreements with many different public and private colleges and universities permit students to complete other specialized programs on UW Colleges campuses. The UW Colleges began offering an on-line Associate of Arts and Science degree in 2001.

**Mission:** The University of Wisconsin Colleges is a multi-campus institution that prepares students for success at the baccalaureate level of education, provides the first two years of a liberal arts, general education that is accessible and affordable, and advances the Wisconsin Idea by bringing the resources of the University to the people of the state and the communities that provide and support its campuses.

**Vision:** By 2012 the University of Wisconsin Colleges will be recognized for pre-eminence in liberal arts general education.

**A Part of the University of Wisconsin System:** The UW Colleges is one of 15 institutions within the UW System. The System also includes 11 comprehensive universities granting bachelors and masters degrees; two doctoral universities granting bachelors, masters, and doctoral degrees, and UW-Extension.

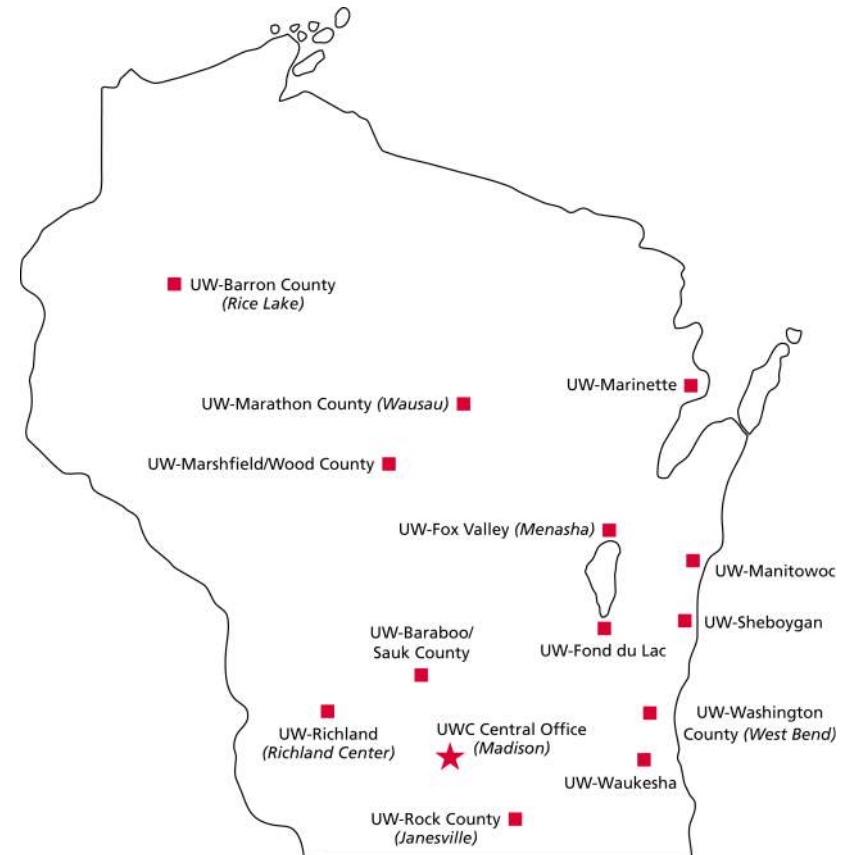
**Accreditation:** The University of Wisconsin Colleges is accredited by The Higher Learning Commission and is a member of the North Central Association of Colleges and Universities located at: 30 North LaSalle St. Suite 2400 Chicago, IL 60602-2504; phone 800/621-7440; <http://www.ncahigherlearningcommission.org/>

**Liberal Arts General Education:** The University of Wisconsin Colleges excels in providing its students with a liberal arts general education, the foundation of the Bachelor's degree. This includes a steadfast commitment to instruction in the natural sciences and mathematics, the social sciences, and the arts and humanities. It also involves an equally strong commitment to preparing students for lifelong learning, leadership, service and responsible citizenship.

**Degrees and Certificates:** The UW Colleges are accredited to offer the Associate of Arts and Science Degree as well as Certificates for Business, Environmental Studies, International Studies and Women's Studies.

## Central Administrative Office Contact Information

Address	780 Regent St. Suite 130 Madison, WI 53715-2635	
Chancellor	David Wilson (effective May 1, 2006)	(608)263-1783
Interim Chancellor	Marvin Van Kekerix	(608)263-1783
Provost & Vice Chancellor for Academic Affairs	Margaret Cleek	(608)263-1794
Associate Vice Chancellor for Academic Affairs	Gregory P. Lampe	(608)263-7217
Vice Chancellor for Administrative Services	Steven Wildeck	(608)264-3040
Assistant Vice Chancellor for Information Technology	Dick Cleek	(608)265-5764
Special Assistant to the Chancellor for Marketing and University Relations	Teri Venker	(608)263-5061
Chief Student Affairs Officer	Nora McGuire	(608)263-0476
Registrar	Dan Vande Yacht	(608)262-9652
Director, Student Financial Aid	Marilyn Krump	(608)263-7727
Director, Continuing Education (interim)	Leanne Doyle	(920)929-3622
Director, Distance Education	Barbara Stinson	(608)265-0659
Director, Human Resources	Lyn Reigstad	(608)262-2578
Grants	Eric Smith	(608)265-6781
Institutional Research	Gregg Nettessheim	(608)263-5991



## Fast Facts

### Fall 2005 Student Enrollment:

Headcount:	12,543
Full Time Equivalent:	9,104
New freshmen:	4,128

### Fall 2005 Credit Enrollment:

Freshmen	95,282	credits	65% of total
Sophomores	33,876	credits	30% of total
Special Students	7,403	credits	5% of total
<b>Total Enrolled Credits</b>	<b>136,561</b>	<b>credits</b>	<b>100%</b>

<b>Degrees and certificates awarded in 2004-2005:</b>	1196	Associate of Arts and Science Degrees
	12	Certificates

### Financial Information:

2004-2005 Budget:	\$79,363,131
Fall 2005 Tuition and Average Segregated Fees:	\$2,110



## Definitions and Data Sources

### Student Enrollment Definitions:

- ∞ **Headcount:** A count of the students enrolled at a campus. Students may be counted more than once if they are concurrently enrolled at multiple UW Colleges campuses for the term reported.
- ∞ **Full-time equivalent (FTE) - Students:** FTE is the sum of all regular credits divided by 15 plus the sum of all audit credits divided by 30. When calculating FTE, developmental English and Mathematics credits are not included.
- ∞ **Freshman:** A student enrolled in a program leading to completion of an Associate of Arts and Science degree, with fewer than 30 completed degree credits.
- ∞ **New freshman:** A freshman student who has never previously attended an institution of higher education.
- ∞ **Sophomore:** A student enrolled in a program leading to completion of an Associate of Arts and Science degree with 30 or more completed degree credits.
- ∞ **Special Student:** A student enrolled in courses, but not in a program leading to completion of an Associate of Arts and Science degree.
- ∞ **Transfer Student:** A student who has previously attended another institution for whom some or all of the previously completed credits are accepted by the UW Colleges.
- ∞ **Readmit Student:** A student who previously attended the UW Colleges, stopped attending for one or more academic terms (not summer), and who has applied for admission and been granted permission to re-enroll in classes for a given term.
- ∞ **Non-traditional age student:** A student 22 years old or older as of the first day of the fall term for the term being reported.
- ∞ **Full-time student:** A student enrolled for 12 or more credits in the term reported. Audit credits are not included in the computation of full-time or part-time status.
- ∞ **Part-time student:** A student enrolled for fewer than 12 credits in the term reported.
- ∞ **High School Quartile:** The percentile high school rank of an entering new freshman, placed into one of four quarters. For example, a student who is ranked 24<sup>th</sup> in a class of 100 is in the 1<sup>st</sup> or top quartile. A student ranked 51<sup>st</sup> in a class of 100 is in the 3<sup>rd</sup> quartile.

### Faculty/Instructional Academic Staff Definitions

- ∞ **Full-time equivalent (FTE) - Faculty:** An FTE faculty member is one who is teaching a full load as defined by academic departments. These vary but are generally defined as at least 24 class contact hours per academic year. Service on campus and university committees is required.
- ∞ **Full-time equivalent (FTE) – Instructional Academic Staff (IAS):** FTE for IAS is based on the average number of contact hours being taught by faculty in the academic department. Just as with faculty these vary by department. Service on campus and university committees is optional.

**University Definitions**

- ∞ **UW Comprehensives:** Includes UW-Eau Claire, Green Bay, La Crosse, Oshkosh, Parkside, Platteville, River Falls, Stevens Point, Stout, Superior, Whitewater

**Data Sources:**

Registrar's 10<sup>th</sup> Day Enrollment Reports; Institutional Research Reporting; Office of Human Resources/Affirmative Action; Office of Administrative Services; Financial Aid Office; UW System Joint Administrative Committee on Academic Programs (JACAP); UW System Office of Policy Analysis and Research (OPAR).

**About the Fact Book:**

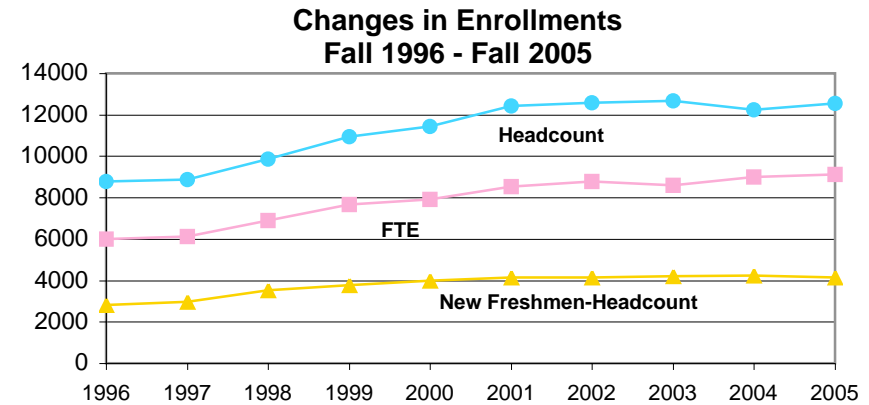
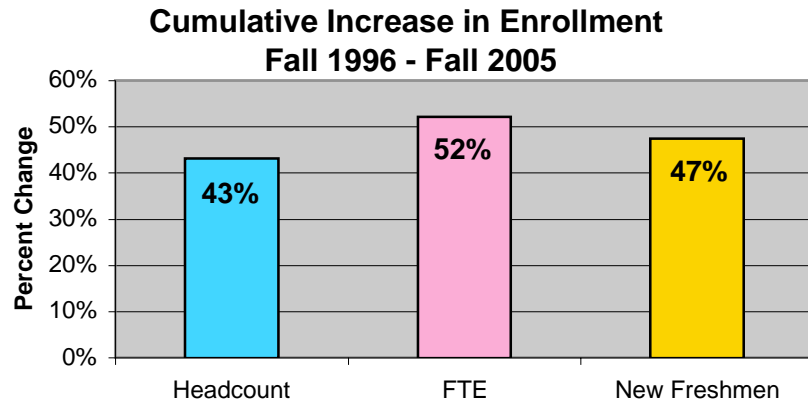
The *UW Colleges Fact Book* is based upon the premise that reported data for each section is the most accurate and current available at the time of publication. The *Fact Book* does not constitute a contract between the institution and its students, employees, and communities. When making comparisons, it is important to note that sources external to the institution sometimes use different definitions and data parameters in compiling their reports. The sole purpose of this publication is to provide an informational summary of institutional facts and statistics about the University of Wisconsin Colleges.

The University of Wisconsin Colleges is committed to a program of equal opportunity for all faculty, academic staff, classified staff, and students, and will actively carry out all federal and state regulations and executive orders. No person may be denied employment or related benefits or admission to the university or to any of its programs or activities, either academic or nonacademic, curricular or extracurricular, because of race, color, creed, religion, sex, marital status, age, disability, veterans status, national origin, sexual orientation, relationship to other employees, arrest or conviction records, political affiliation, religious practice, or memberships in the national guard, state defense force or any other reserve component of the military forces of the United States or the State of Wisconsin.

## Student Information Student Enrollments

10 Year Summary of UW Colleges Fall Semester Enrollments  
1996 - 2005

	1996	1997	1998	1999	2000	2001	2002	2003	2004	2005
<b>Headcount</b>	8765	8875	9844	10930	11439	12431	12569	12662	12236	12543
<b>Full-Time Equivalent (FTE)</b>	5983	6108	6901	7671	7917	8517	8773	8605	8980	9104
<b>New Freshmen</b>	2802	2973	3515	3783	3983	4134	4144	4195	4224	4128



In the ten year period from 1996 - 2005, enrollment in the UW Colleges increased by approximately 50%. Most of this increase occurred between 1997 and 2002 with an increase of 44% in full-time equivalent (FTE) enrollment during this period. More recently headcount enrollments and enrollments of new freshmen have stabilized, while FTE enrollments have increased slightly, as greater numbers of students enroll for more credits.\*

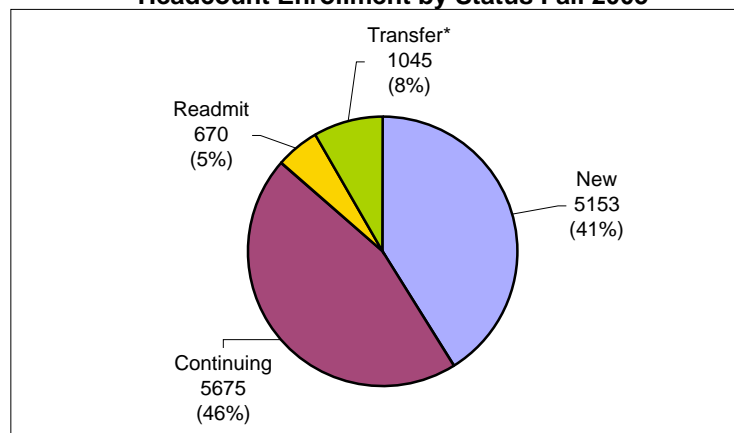
\*FTE enrollment is computed by adding the sum of all regular credits divided by 15, to the sum of all audit credits divided by 30.

## Student Information Student Enrollments

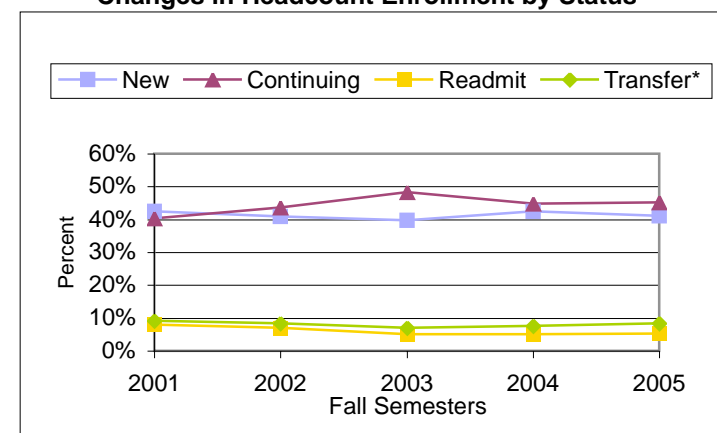
5 Year Summary of UW Colleges Headcount Enrollments by Status and Level

Status	Level	2001	2002	2003	2004	2005
<b>New</b>	Freshmen	4134	4144	4195	4224	4128
	Sophomore	6	8	28	11	13
	Special	1133	998	814	965	1012
<b>Continuing</b>	Freshmen	2478	2661	1322	2749	2791
	Sophomore	2289	2574	4324	2428	2553
	Special	243	253	464	309	331
<b>Readmit</b>	Freshmen	445	386	215	288	346
	Sophomore	275	277	300	198	214
	Special	284	222	118	137	110
<b>Transfer*</b>	Freshmen	811	690	717	609	667
	Sophomore	329	315	90	227	251
	Special	4	41	74	91	127
<b>Total</b>		<b>12431</b>	<b>12569</b>	<b>12661</b>	<b>12236</b>	<b>12543</b>
<b>Percent of Total:</b>	New	42%	41%	40%	42%	41%
	Continuing	40%	44%	48%	45%	45%
	Readmit	8%	7%	5%	5%	5%
	Transfer*	9%	8%	7%	8%	8%

Headcount Enrollment by Status Fall 2005



Changes in Headcount Enrollment by Status



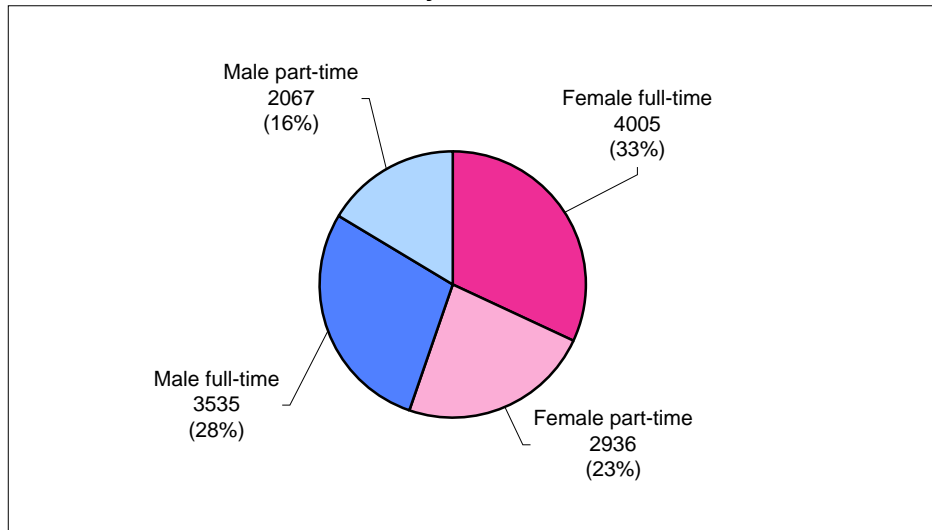
\*in these charts "transfer" denotes students who have transferred into the UW Colleges

## Student Information Student Enrollments

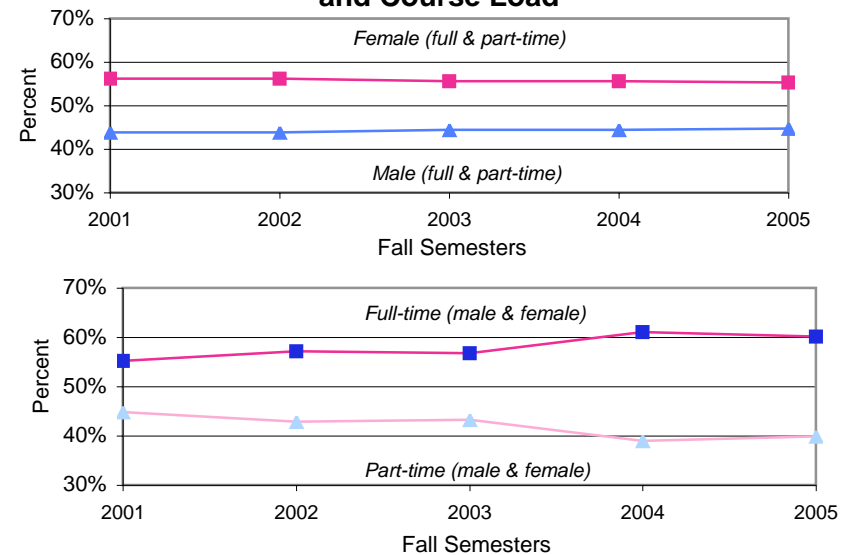
### 5 Year Summary of UW Colleges Headcount Enrollments by Gender and Course Load

Gender and Course Load		2001	2002	2003	2004	2005
<b>Headcount:</b>	Female full-time	3696	3815	3746	3917	4005
	Female part-time	3299	3244	3294	2893	2936
	Male full-time	3175	3366	3436	3553	3535
	Male part-time	2275	2142	2185	1873	2067
	<b>Total</b>	<b>12445</b>	<b>12567</b>	<b>12661</b>	<b>12236</b>	<b>12543</b>
<b>Percent of Total:</b>	Female	56%	56%	56%	56%	55%
	Male	44%	44%	44%	44%	45%
	Full-time	55%	57%	57%	61%	60%
	Part-time	45%	43%	43%	39%	40%

Headcount Enrollment by Gender and Course Load Fall 2005



Changes in Headcount Enrollment by Gender and Course Load

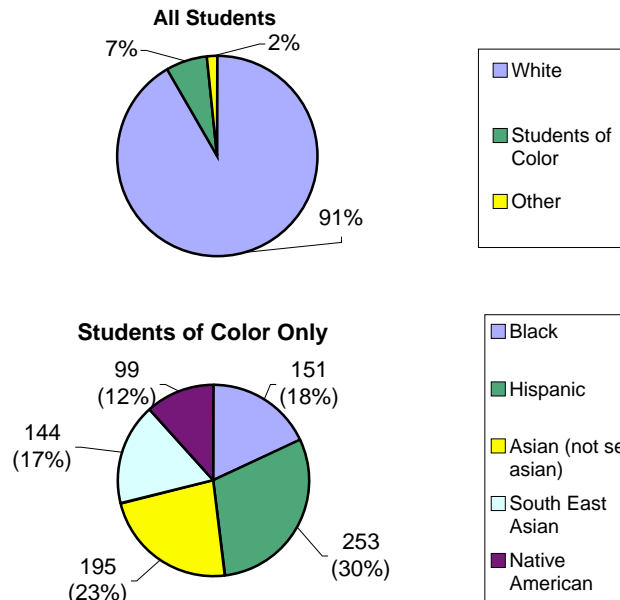


## Student Information Student Enrollments

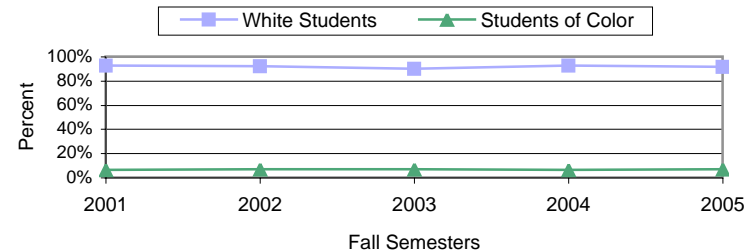
### 5 Year Summary of UW Colleges Headcount Enrollments by Ethnicity

	Ethnicity	2001	2002	2003	2004	2005
<b>All Students</b>	White	11483	11568	11373	11310	11481
	Students of Color	771	832	840	773	842
	Other	175	167	448	153	220
	<b>Total</b>	<b>12429</b>	<b>12567</b>	<b>12661</b>	<b>12236</b>	<b>12543</b>
<b>Students of Color</b>	Black	184	186	183	142	151
	Hispanic	210	237	230	224	253
	Asian (not se asian)	119	111	271	214	195
	South East Asian	181	220	75	112	144
	Native American	77	78	81	81	99
	Other	129	136	53	48	43
<b>Percent of Total:</b>	White	92%	92%	90%	92%	92%
	Students of Color	6%	7%	7%	6%	7%
<b>Percent Change from Prior Year:</b>	White	7%	1%	-2%	-1%	2%
	Students of Color	19%	8%	1%	-8%	9%

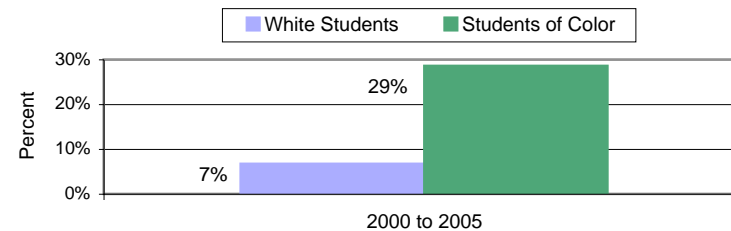
Headcount Enrollment Fall 2005



Headcount Enrollment - % of Total



% Change in Fall Term Headcount Enrollments 2000 to 2005

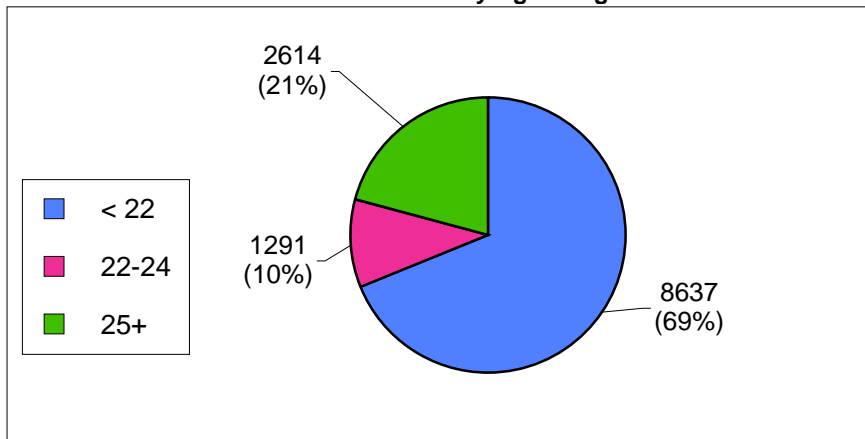


## Student Information Student Enrollments

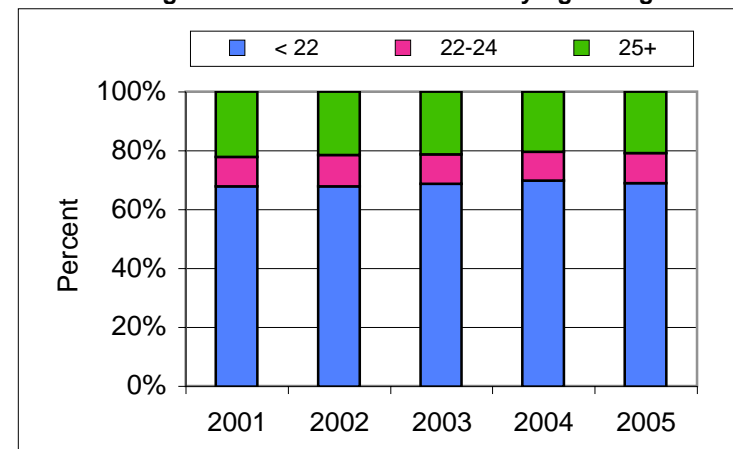
### 5 Year Summary of UW Colleges Fall Semester Headcount Enrollments by Age Range

	Age Range	2001	2002	2003	2004	2005
Headcount:	< 22 years of age	8436	8530	8708	8528	8637
	22-24	1253	1319	1259	1212	1291
	25+	2753	2712	2694	2496	2614
	<b>Total</b>	<b>12442</b>	<b>12561</b>	<b>12661</b>	<b>12236</b>	<b>12542</b>
Percent of Total:	< 22	68%	68%	69%	70%	69%
	22-24	10%	11%	10%	10%	10%
	25+	22%	22%	21%	20%	21%

Headcount Enrollment by Age Range Fall 2005



Changes in Headcount Enrollment by Age Range

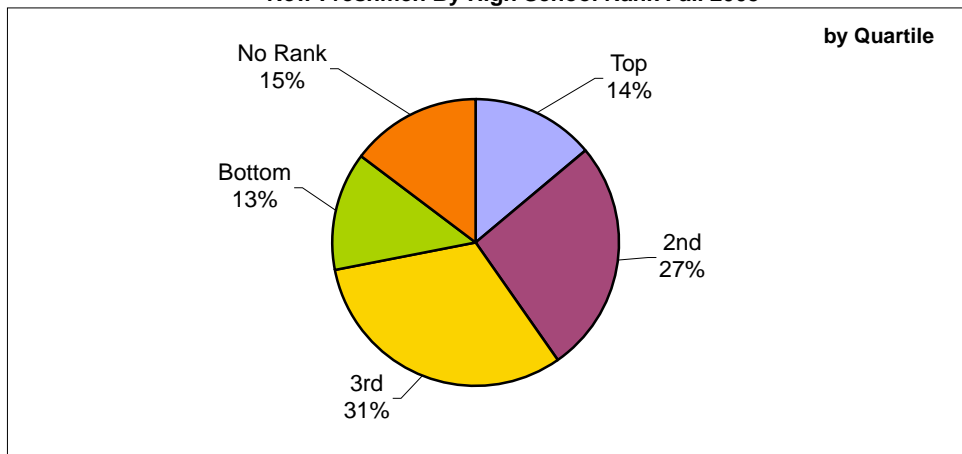


## Student Information Student Enrollments

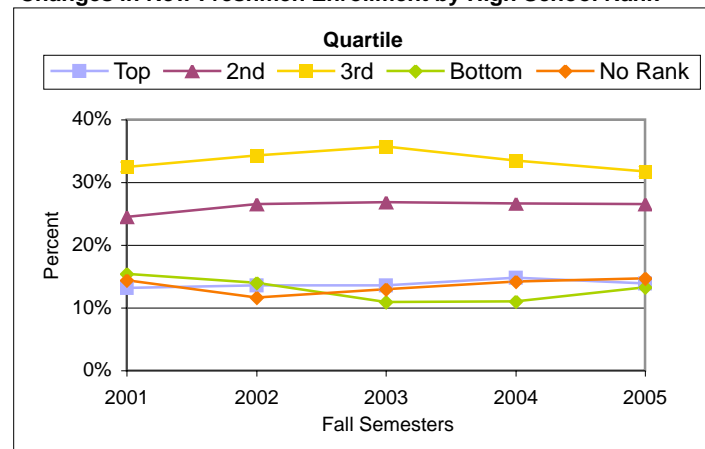
### 5 Year Summary of UW Colleges Headcount Enrollments by High School Rank and Gender New Freshmen Only

Quartile	Gender	2001	2002	2003	2004	2005
Top	Female	369	386	385	408	387
	Male	177	176	185	215	185
2nd	Female	588	658	610	670	611
	Male	423	441	515	456	483
3rd	Female	696	700	710	686	630
	Male	646	719	788	727	679
Bottom	Female	258	225	174	176	214
	Male	380	356	283	289	333
No Rank	Female	277	233	270	306	277
	Male	318	249	275	291	329
	<b>Total</b>	<b>4132</b>	<b>4143</b>	<b>4195</b>	<b>4224</b>	<b>4128</b>
<b>Percent of Total:</b>	Top	13%	14%	14%	15%	14%
	2nd	24%	27%	27%	27%	27%
	3rd	32%	34%	36%	33%	32%
	Bottom	15%	14%	11%	11%	13%
	No Rank	14%	12%	13%	14%	15%

New Freshmen By High School Rank Fall 2005



Changes in New Freshmen Enrollment by High School Rank





## Student Information

### Student Enrollments

#### Fall 2005 Enrollment Comparison

	Headcount	FTE	New Freshmen	Females	Non-Traditional Students*	Students of Color	Full-Time Students**	1st or 2nd HS Quartile***
Baraboo/Sauk County	615	449	209	51%	35%	9%	56%	57%
Barron County	573	396	203	55%	15%	4%	54%	39%
Fond du Lac	758	601	287	58%	28%	5%	68%	45%
Fox Valley	1719	1245	580	52%	31%	7%	59%	39%
Manitowoc	643	530	231	53%	25%	5%	72%	45%
Marathon County	1295	1000	468	54%	26%	11%	63%	43%
Marinette	512	370	172	59%	26%	2%	59%	47%
Marshfield/Wood County	649	488	239	64%	31%	2%	60%	45%
Richland	464	372	184	58%	20%	3%	67%	37%
Rock County	901	644	274	56%	35%	9%	59%	49%
Sheboygan	704	513	235	52%	37%	11%	57%	41%
Washington County	951	755	338	56%	24%	3%	70%	45%
Waukesha	2064	1521	665	50%	29%	9%	61%	23%
On-Line	695	226	43	77%	72%	4%	32%	35%
<b>UWC</b>	<b>12543</b>	<b>9104</b>	<b>4128</b>	<b>55%</b>	<b>31%</b>	<b>7%</b>	<b>60%</b>	<b>40%</b>

notes:

\* Students age 22 or older

\*\* Enrolled for 12 or more credits in the fall 2005 semester

\*\*\* Graduated from high school in the top 50% of graduating class; includes new freshmen only

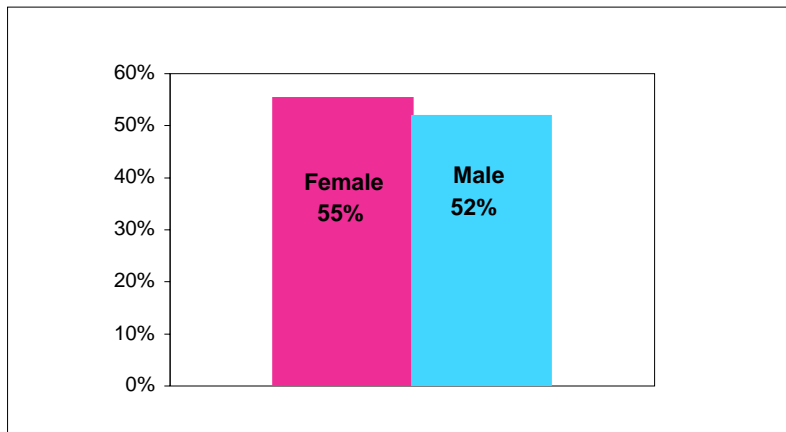
## Student Information New Freshmen Retention

### 5 Year New Freshmen Retention Summary by Gender

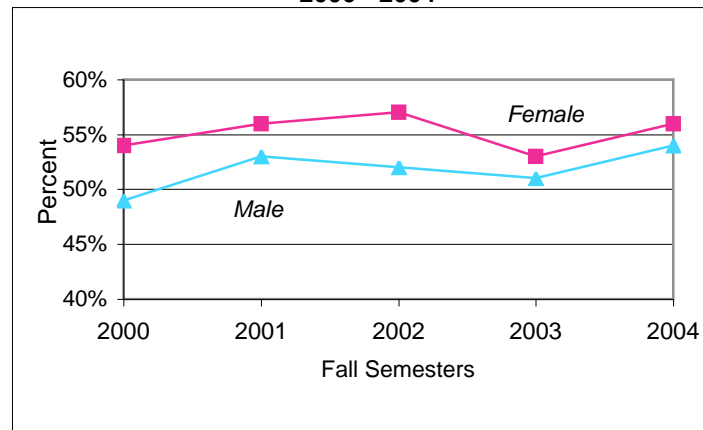
Entering Fall Term	Female	Male	All
	Retention Rate After 1 Year		
2000	54%	49%	52%
2001	56%	53%	54%
2002	57%	52%	55%
2003	53%	51%	52%
2004	56%	54%	55%

note: includes both full-time and part-time students

### Average 1 Year Retention Rates for Fall Term New Freshmen by Gender 2000 - 2004



### Changes in New Freshmen Retention by Gender 2000 - 2004



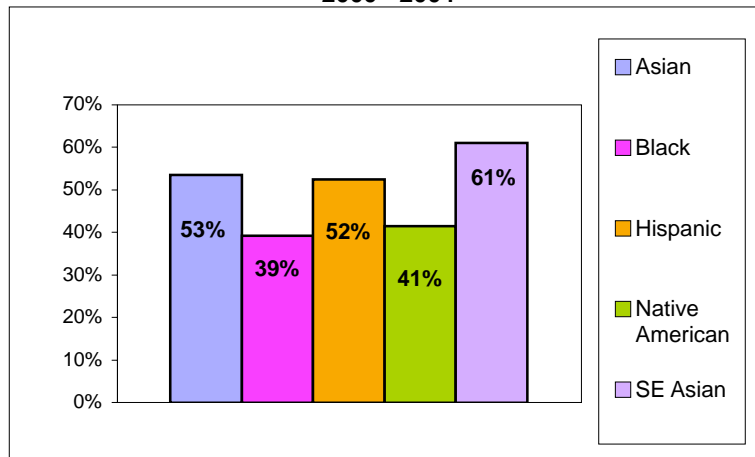
## Student Information New Freshmen Retention

### 5 Year New Freshmen Retention Summary by Ethnicity

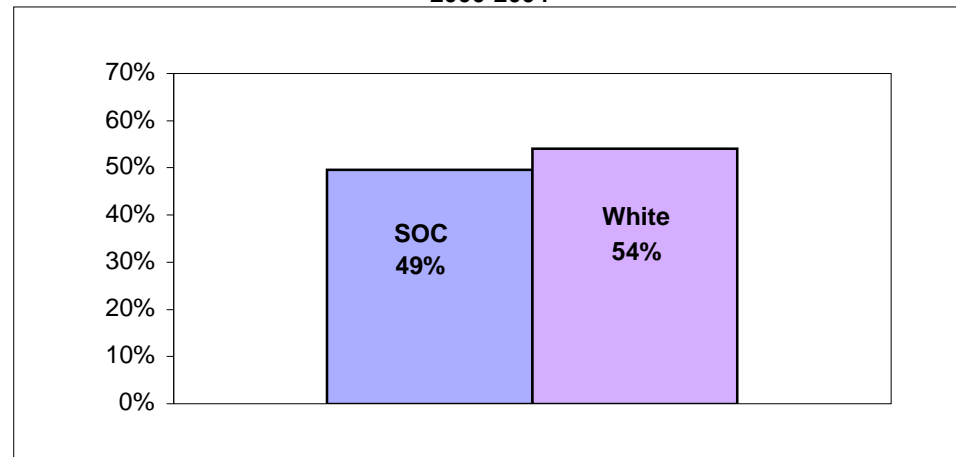
Entering Fall Term	Asian	Black	Hispanic	Native American	SE Asian	White	All
	<i>Retention Rate After 1 Year</i>						
2000	44%	48%	49%	38%	68%	52%	52%
2001	72%	46%	57%	41%	61%	54%	54%
2002	48%	42%	52%	46%	61%	55%	55%
2003	49%	34%	48%	32%	52%	53%	52%
2004	54%	26%	56%	50%	63%	56%	55%

note: includes both full-time and part-time students

**Average 1 Year Retention Rates for Fall Term New Freshmen Students of Color  
2000 - 2004**



**Average 1 Year Retention Rates for Fall Term New Freshmen Students of Color and White Students  
2000-2004**



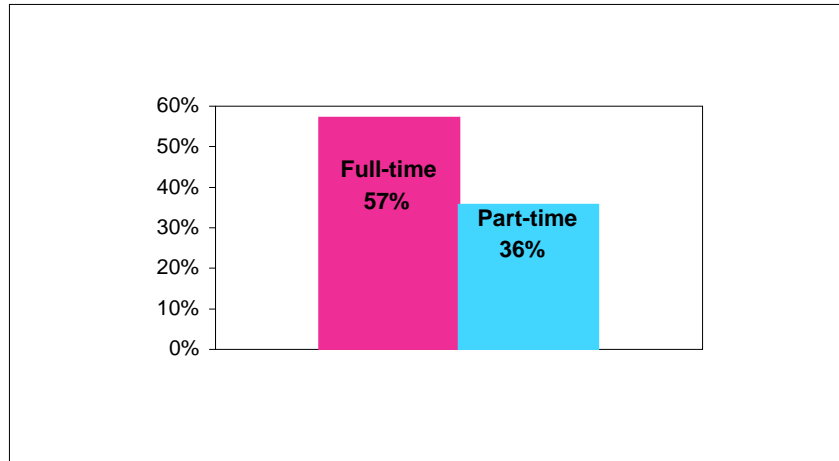
## Student Information New Freshmen Retention

### 5 Year New Freshmen Retention Summary by Course Load

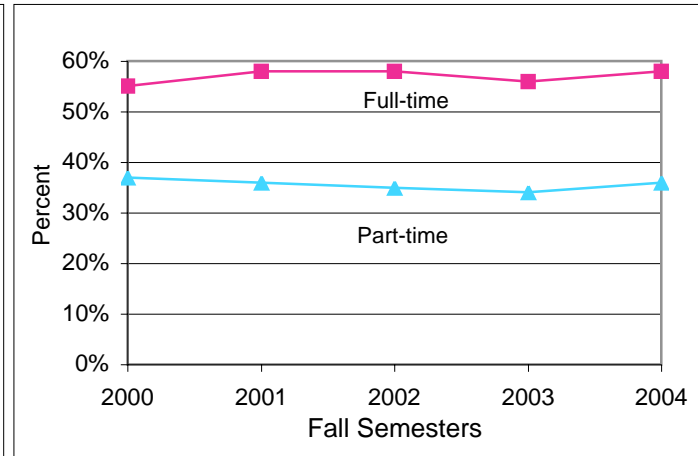
Entering Fall Term	Full-time	Part-time	All
	Retention Rate After 1 Year		
2000	55%	37%	52%
2001	58%	36%	54%
2002	58%	35%	55%
2003	56%	34%	52%
2004	58%	36%	55%

note: A full-time student is one who is enrolled for 12 or more credits on the 10th day of classes.

### Average 1 Year Retention Rates for Fall Term New Freshmen by Course Load 2000-2004



### Changes in New Freshmen Retention by Course Load 2000-2004



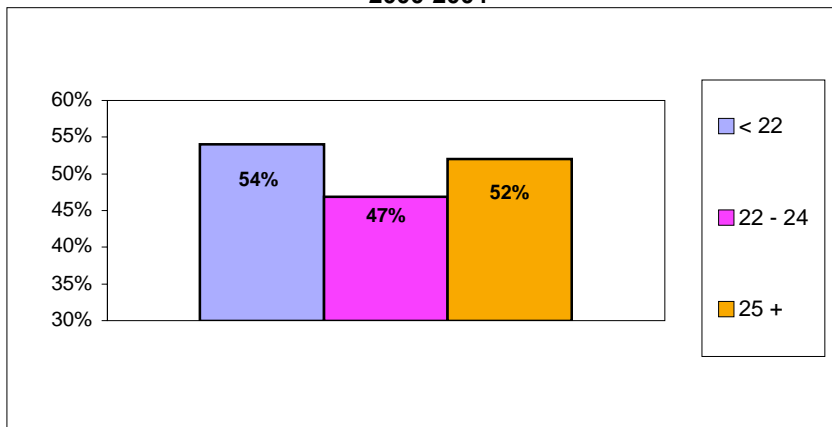
## Student Information New Freshmen Retention

### 5 Year New Freshmen Retention Summary by Age Range

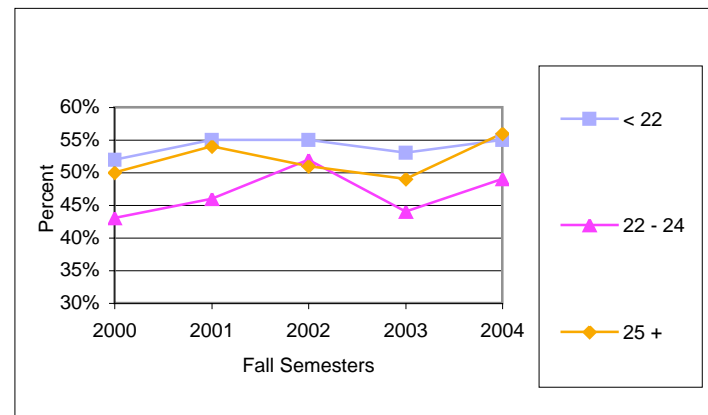
Entering Fall Term	Age Range			All
	< 22	22 - 24	25 +	
	<i>Retention Rate After 1 Year</i>			
2000	52%	43%	50%	52%
2001	55%	46%	54%	54%
2002	55%	52%	51%	55%
2003	53%	44%	49%	52%
2004	55%	49%	56%	55%

note: includes both full-time and part-time students

Average 1 Year Retention Rates for Fall Term New Freshmen by Age Range  
2000-2004



Changes in New Freshmen Retention by Age Range  
2000-2004



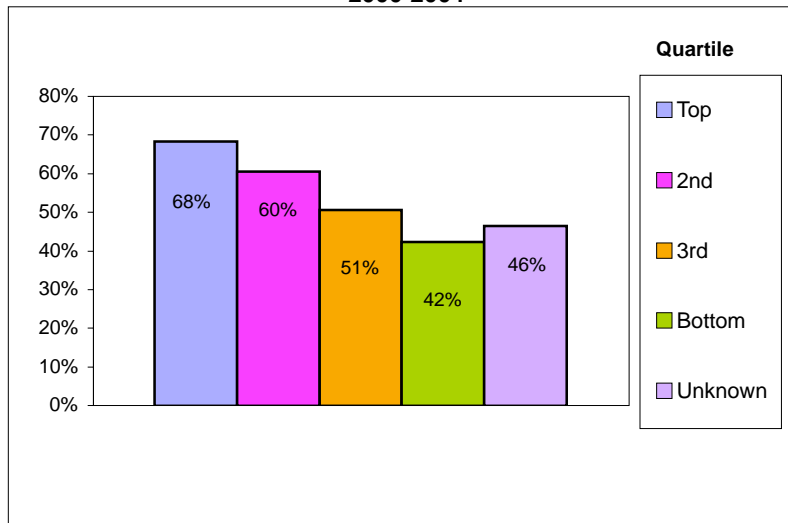
## Student Information New Freshmen Retention

### 5 Year New Freshmen Retention Summary by High School Rank

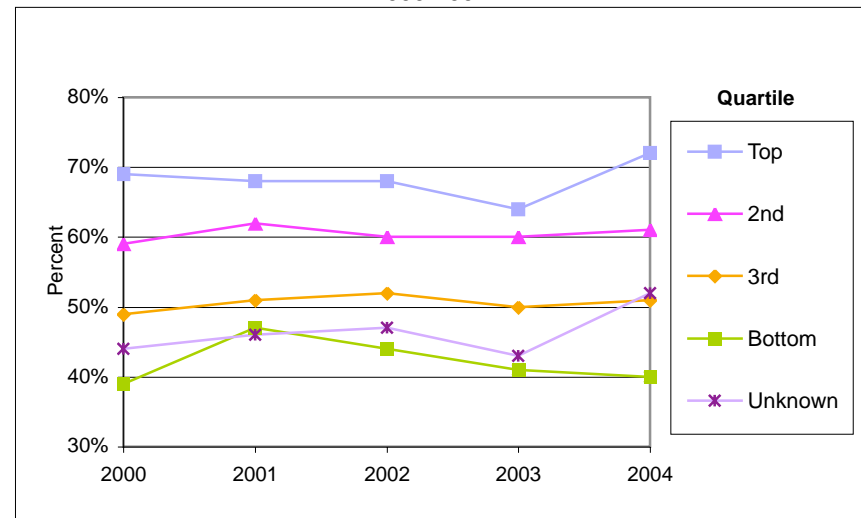
#### High School Quartile

Entering Fall Term	Top	2nd	3rd	Bottom	Unknown	All
	<i>Retention Rate After 1 Year</i>					
2000	69%	59%	49%	39%	44%	52%
2001	68%	62%	51%	47%	46%	54%
2002	68%	60%	52%	44%	47%	55%
2003	64%	60%	50%	41%	43%	52%
2004	72%	61%	51%	40%	52%	55%

Average 1 Year Retention Rates for Fall Term New Freshmen by High School Rank 2000-2004



Changes in New Freshmen Retention by High School Rank 2000-2004

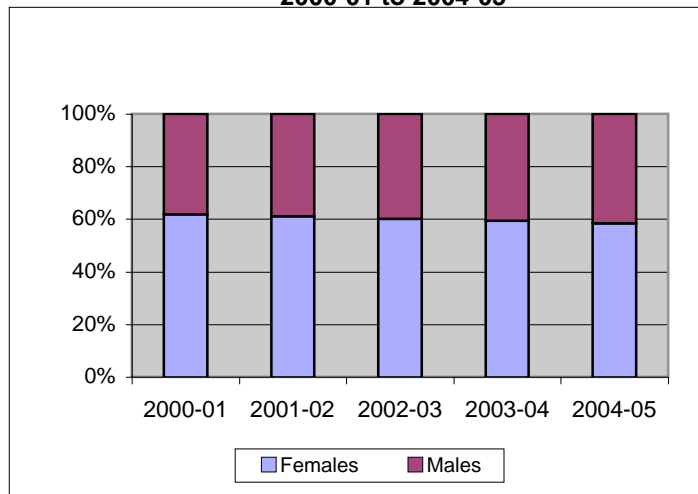


## Student Information Degrees Conferred

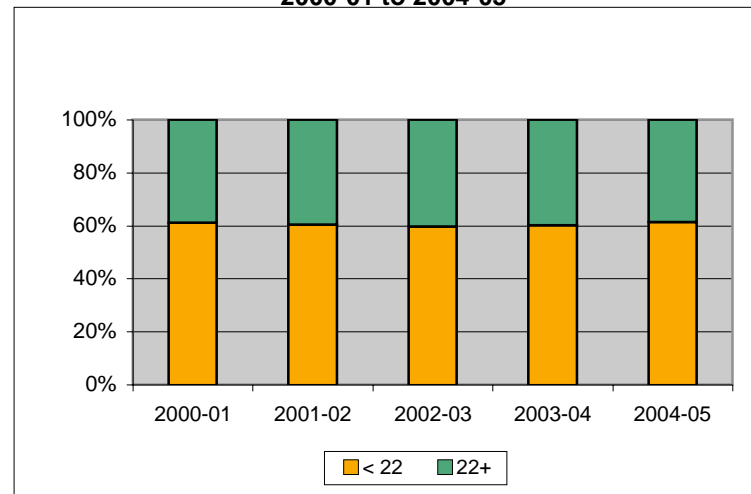
### 5 Year Summary of Associate of Arts and Science Degrees Conferred

	2000-2001	2001-2002	2002-2003	2003-2004	2004-2005
Total Degrees Conferred	987	1106	1214	1331	1194
Females	609	676	730	789	698
Males	378	430	484	542	496
Non-Traditional Age Students (22+)	384	437	490	529	461
Traditional Age Students (<22)	603	669	724	802	733

Degrees Conferred by Gender  
2000-01 to 2004-05



Degrees Conferred by Age Range  
2000-01 to 2004-05



**Student Information**  
**Student Transfer**

**Transfer Performance and Persistence**  
**UW Colleges Students Who Transferred to UW System Institutions**  
**In Fall 2002\***

<b>Receiving Institution</b>	<b>Student Count**</b>	<b>Average First Semester GPA at Receiving Institution</b>	<b>% Retained to a 2nd Year at Receiving Institution</b>
EAU CLAIRE	126	2.86	73%
GREEN BAY	155	2.81	92%
LA CROSSE	122	2.90	81%
MADISON	299	3.01	88%
MILWAUKEE	457	2.83	77%
OSHKOSH	297	2.61	81%
PARKSIDE	19	2.72	41%
PLATTEVILLE	102	2.84	73%
RIVER FALLS	41	2.88	82%
STEVENS POINT	237	2.90	79%
STOUT	113	3.02	86%
SUPERIOR	23	3.03	68%
WHITEWATER	175	2.84	79%
<b>All</b>	<b>2166</b>	<b>2.90</b>	<b>82%</b>

\*most recent data available; \*\*includes only students who began at UW Colleges as New Freshmen



**Student Information**

**Student Transfer**

Major or Major Area*	Top 25 Baccalaureate Majors by Campus														UWC
	Baraboo	Barron	Fond du Lac	Fox Valley	Manitowoc	Marathon	Marinette	Marshfield	Richland	Rock	Sheboygan	Washington	Waukesha	On-Line	
BUSINESS	59	100	124	255	125	209	48	94	49	95	129	154	464	27	1441
EDUCATION	35	76	65	109	38	116	40	86	46	58	54	79	153	18	802
HEALTH SCIENCES	18	39	56	91	43	59	18	85	16	34	40	39	278	37	538
COMMUNICATION & THEATRE ARTS	22	21	37	116	34	66	30	42	17	55	46	55	194	9	541
SOCIOLOGY	9	22	56	103	38	86	25	42	18	38	41	47	90	10	525
BIOLOGY	15	44	28	80	42	72	33	37	17	33	30	33	87	4	464
PSYCHOLOGY	23	24	31	68	31	54	11	39	24	18	39	24	87	7	386
ENGINEERING	12	21	31	60	28	67	12	29	13	18	37	24	89	4	352
POLITICAL SCIENCE	22	12	28	50	28	38	10	26	21	21	30	25	88	5	311
COMPUTER SCIENCE	9	18	21	51	21	45	10	27	11	19	22	25	94	3	279
ART	11	18	23	28	15	31	7	16	10	24	22	26	40	3	231
ENGLISH	15	11	13	37	20	34	5	21	12	21	9	24	43	3	222
PHYSICAL EDUCATION & ATHLETICS	14	8	13	24	12	37	4	23	21	10	17	16	40	1	199
HISTORY	8	12	10	29	15	18	8	11	5	12	21	20	28	2	169
NATURAL RESOURCES	8	9	8	18	20	32	7	10	15	8	14	16	30	1	165
AGRICULTURE AND LIFE SCIENCES	7	9	8	13	4	12	3	12	4	8	12	11	20	3	103
SPECIALIZED VOCATIONAL MAJOR	8	14	7	18	10	9		8	1	12	3	6	30		96
OTHER	2		15	30		14	4	6		7	5	5	18	6	88
GEOGRAPHY	3	9	8	12	14	1	2	6	4	5	9	12	23	1	85
MATHEMATICS	5	6	6	14	6	13	6	15	7	7	1	8	11	2	94
ECONOMICS	4	2	5	15	11	4	5	2	3	4	3	8	24	3	66
CHEMISTRY	1	4		12	5	13	5	4	2	5	5	4	24	1	60
INTERDISCIPLINARY STUDIES			2	3	3		4			6	16	22	17	11	56
ZOOLOGY	3	5	6	5	5	10	4	10	9	8	5	2	9	1	72
SPANISH	4	5	2	13	3	10		4	1	7	7	7	13		63

\*at time of graduation

note: includes new freshmen from fall 1995 - summer 2001 graduating from another UW prior to fall 2005

**Curriculum and Instruction  
Course Analyses**

**Top 25 UW Colleges Courses by Enrollment Fall 2005**

Course			Total Enrolled Students (headcount)	Percent of All Enrollments in All Courses*
1	English Composition II	ENG 102	2766	6.0%
2	College Algebra	MAT 110	1982	4.3%
3	Intro College Algebra	MAT 105	1944	4.2%
4	English Composition I	ENG 101	1727	3.7%
5	First-Year Seminar	LEC 100	1637	3.6%
6	Introductory Psychology	PSY 202	1235	2.7%
7	Intro Public Speaking	COM 103	1052	2.3%
8	US His to Civ War (ES)	HIS 101	1040	2.3%
9	Intro to Sociology	SOC 101	1036	2.2%
10	Elementary Algebra	MAT 091	1020	2.2%
11	Intro to Philosophy	PHI 101	986	2.1%
12	Intro to Business	BUS 101	624	1.4%
13	General Chemistry I	CHE 145	556	1.2%
14	Economics - Macro	ECO 203	533	1.2%
15	Hist of Western Civilization	HIS 105	522	1.1%
16	Amer Gov & Politics	POL 104	512	1.1%
17	Basics of Composition	ENG 098	447	1.0%
18	Concepts of Biology	BIO 109	436	0.9%
19	Interpersonal Communication	COM 101	436	0.9%
20	Intro Accounting	BUS 201	430	0.9%
21	Intro Chemistry	CHE 125	429	0.9%
22	Animal Biology	ZOO 101	425	0.9%
23	Fitness for Life	PED 127	412	0.9%
24	Word Process/Present Concepts	CPS 106	403	0.9%
25	1st Semester Spanish	SPA 101	372	0.8%

**notes:**

*The top 6 courses account for 1/4 of all UWC course enrollments*

*The top 10 courses account for 1/3 of all UWC course enrollments*

*The top 25 courses account for 1/2 of all UWC course enrollments*

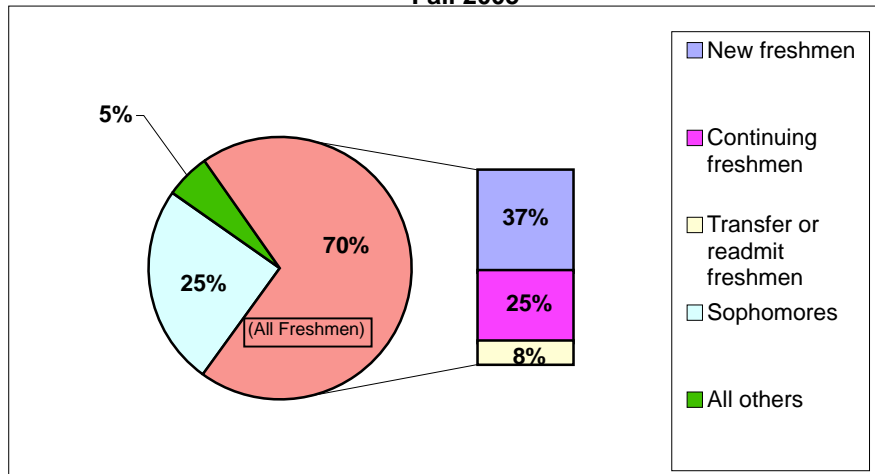
\*This is the percentage of all enrollments in all courses in this semester. One student in one course is considered one course enrollment, regardless of the course's credit value. For example, in fall 2005, students enrolled in English Composition II account for 6.0% of all course enrollments for the semester.

## Curriculum and Instruction Course Analyses

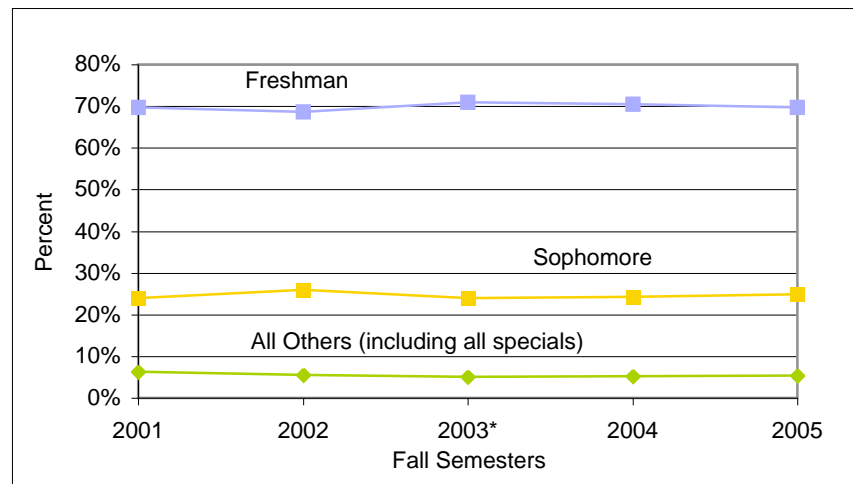
### 5 Year Summary of 10th Day Enrolled Student Credit Hours by Academic Level

	Level	2001	2002	2003*	2004	2005
<b>Enrolled Credits</b>	Freshmen	89516	90328	91644	94965	95282
	<i>New Freshmen</i>	48451	48591	48228	51689	50240
	Sophomore	30768	34109	30978	32621	33876
	All Others (including all specials)	8038	7308	6454	7107	7403
	<b>Total</b>	<b>128322</b>	<b>131745</b>	<b>129076</b>	<b>134693</b>	<b>136561</b>
<b>Percent of Enrolled Credits</b>	Freshmen	70%	69%	71%	71%	70%
	<i>New Freshmen</i>	38%	37%	37%	38%	37%
	Sophomore	24%	26%	24%	24%	25%
	All Others (including all specials)	6%	6%	5%	5%	5%

**Student Credit Hours by Academic Level  
Fall 2005**



**Changes in Student Credit Hour Enrollment by Status**

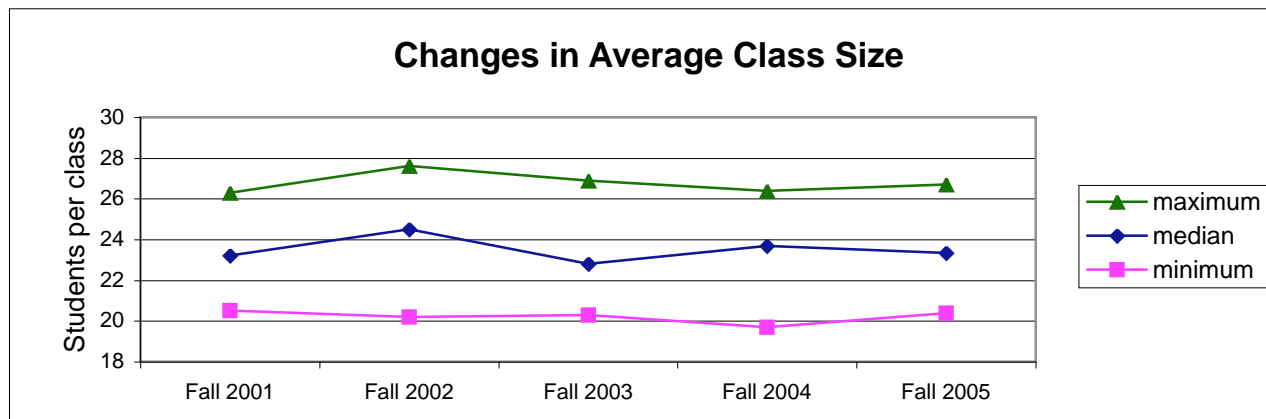


\*unofficial: In fall 2003, the first term using the PRISM student information system, we were not yet ready to calculate official student credit hours by level.

## Curriculum and Instruction Course Analyses

### 5 Year Summary of Average Class Size by Campus - 10th Day Enrollments

Campus	Fall 2001	Fall 2002	Fall 2003	Fall 2004	Fall 2005
Baraboo	20.7	21.4	21.3	19.7	20.5
Barron	21.1	20.2	20.8	20.8	20.4
Fond du Lac	24.1	25.4	25.3	25.0	25.5
Fox	25.6	25.9	25.7	25.4	24.1
Manitowoc	26.3	25.9	26.9	26.4	24.6
Marathon	23.2	23.2	22.8	22.7	21.4
Marinette	21.6	26.6	22.3	24.0	24.0
Marshfield	20.5	23.4	22.8	22.3	22.7
Richland	22.7	24.5	25.2	24.8	21.4
Rock	23.3	21.4	20.3	21.4	20.7
Sheboygan	22.6	23.6	22.8	23.4	21.4
Washington	24.7	26.4	25.9	26.1	25.6
Waukesha	26.2	27.6	26.7	24.6	24.5
On-Line Pgm				20.8	26.7



## Curriculum and Instruction Instructional Resources

## Library Facts and Figures 2003 - 2004

Library services for the University of Wisconsin Colleges are provided through a library at each campus and a Library Support Services (LSS) office located at UW-Fond du Lac which provides centralized acquisitions, cataloging, and automated systems support for the thirteen campus libraries.

The professional librarians at each campus and from the LSS office work together as the UW Colleges Library Council to make purchasing, budgeting, and policy decisions for the benefit of the entire institution. The staff at each library provide their campus with local services including class and individualized library instruction, reference assistance, collection acquisitions, and access to materials at all campus libraries within the UW System, as well as from libraries world-wide through patron-initiated interlibrary loan and electronic document delivery to the patron's desktop computers. The librarians at UW-Washington County also provide library services to students enrolled in the UW Colleges Online Program.

The library profile presented below collectively highlights the personnel, budget, resources, and levels of service for all 13 campus libraries of the UW Colleges. For this first edition of the UWC Fact Book, the most current data available is taken from the UWC Library Council's first Annual Report issued for the 2003-2004 academic year.

Staffing:	Librarians - fte:	Classified and LTE staff - fte	Student assistants - fte	Total Staff - fte
		28.35	10.51	10.89

Expenditures:	Instructional and Research Materials	Computer hardware and software	other operating expenditures	Total expenditures
		\$551,395	\$51,609	\$95,092

*{print and av materials - \$497,982; electronic materials & databases - \$53,413}*

Collection:	Print and AV Collection	Electronic books and online electronic journals	Print serial titles	licensed databases, e- journals and electronic newspapers
		607,656 volumes	130,000+	1,800+

Circulation:	Circulation Transactions	Interlibrary Loan Transactions
		103,326

Service:	Weekly visits (gate count)	Research classes	Research class attendance
		18,907 patrons	562 classes

## Curriculum and Instruction Continuing Education

### The UW Colleges Continuing Education Program

At the University of Wisconsin Colleges, Continuing Education (CE) is a collaborative venture between the Colleges and UW-Extension relative to the staffing costs of the campus-based Continuing Education personnel. Credit and non-credit programs are coordinated and offered at the local level in response to the needs and interests of participants ranging from young children to senior citizens. In recent years, the UW Colleges have modified the types of programs offered, the length of time in which they occur, and the instructional delivery modes used in an effort to better serve specific audiences while still being fiscally viable for the University. Two examples of new noncredit programs are the on-line noncredit Business Communications Certificate offered via the Internet and the face-to-face management series of seminars for non-profit agencies and organizations.

### 3 Year Summary of Program Information by Campus

<i>Campus</i>	<b>2002-2003</b>			<b>2003-2004</b>			<b>2004-2005</b>		
	<i># of Programs</i>	<i>Headcount Enrollment</i>	<i>CE Staffing*</i>	<i># of Programs</i>	<i>Headcount Enrollment</i>	<i>CE Staffing*</i>	<i># of Programs</i>	<i>Headcount Enrollment</i>	<i>CE Staffing*</i>
Baraboo	136	1835	.50	116	1287	.50	68	925	.50
Barron	53	485	.50	55	1338	.75	65	714	.50
Fond du Lac	264	3232	.80	138	2825	.90	117	2066	.90
Fox Valley	138	2277	1.0	149	2148	1.0	145	1946	1.0
Manitowoc	68	676	.50	89	1129	.50	91	1975	.50
Marathon	227	2638	1.0	175	2680	1.0	204	3409	1.0
Marinette	75	1181	.50	54	671	.50	55	2492	.50
Marshfield	179	1295	.70	120	1477	.70	120	1761	.67-.87
Richland	91	3017	.67	87	3245	.67-.87	90	2383	.95
Rock	130	811	.75	35	568	.75	16	562	.50
Sheboygan	86	1985	.75	86	2159	1.25	86	2193	.75
Washington	63	348	.50	37	576	.50	48	934	.50
Waukesha	198	1443	1.5	214	1294	1.5	106	763	.50
<b>UW Colleges</b>	<b>1708</b>	<b>21223</b>	<b>9.67</b>	<b>1355</b>	<b>21397</b>	<b>10.62</b>	<b>1211</b>	<b>22123</b>	<b>8.87</b>

\*.50 indicates one half-time staff person; 1.0 indicates one full-time staff person, etc.

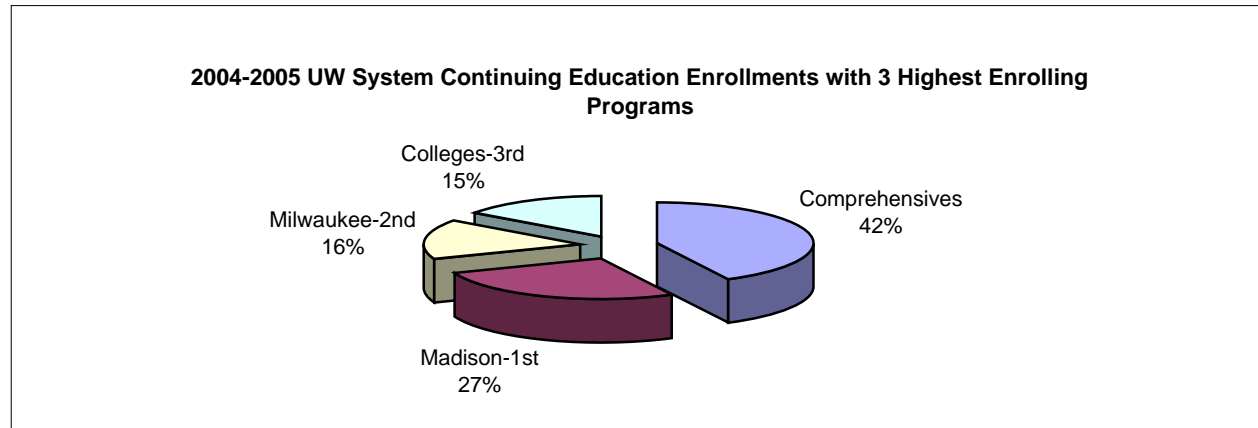
note: While the level of staffing and number of programs delivered declined during the three years, enrollments have grown leading to increased efficiency and effectiveness in meeting local demand for professional development, lifelong learning, and specialized outreach programs.

## Curriculum and Instruction Non-Credit Continuing Instruction

### 5 Year Summary of Non-Credit Continuing Education Enrollments by Campus With 2004-2005 UW System Institution Enrollments

UW Colleges	2000-01	2001-02	2002-03	2003-04	2004-05
Baraboo	1792	1634	1835	1287	925
Barron	913	967	485	1338	714
Fond du Lac	<b>3869</b>	5634	3232	2825	2066
Fox Valley	2364	2718	2277	2148	1946
Manitowoc	747	927	676	1129	1975
Marathon	2592	2633	2638	2680	3409
Marinette	1058	1321	1181	671	2492
Marshfield	975	1318	1295	1477	1761
Richland Center	3033	2968	3017	3245	2383
Rock	616	842	811	568	562
Sheboygan	1400	1261	1985	2159	2193
Washington	613	539	348	576	934
Waukesha	4760	2611	1443	1294	763
<b>TOTAL</b>	<b>24,732</b>	<b>25,373</b>	<b>21,223</b>	<b>21,397</b>	<b>22,123</b>

UW System	2004-05
Eau Claire	8627
Green Bay	3585
LaCrosse	5509
Madison	39,759
Milwaukee	23,592
Oshkosh	12,996
Parkside	5541
Platteville	2501
River Falls	1717
Stevens Point	5026
Stout	6808
Superior	3395
Whitewater	7189
<b>UW Colleges</b>	<b>22,123</b>
<b>UW System</b>	<b>148,368</b>



---

## Curriculum and Instruction

### Alternative Modes of Instruction

#### Increasing Access Through Alternative Modes of Instruction

Alternative modes of instruction for students of the University of Wisconsin Colleges is integral to providing access to the Associate of Arts and Science degree, college credit certificate programs, and courses offered through continuing education. Instructional offerings delivered by these alternative delivery methods are taught by faculty and instructional academic staff who teach on one of the 13 UWC campuses. The same curriculum, course materials, evaluation methods, and grading standards are used in alternative format courses as those found in traditional classroom settings on the campus. Students can earn their entire associate degree from the University of Wisconsin Colleges via the Internet through on-line courses. The college credits earned are transferable in the same way as any other credits earned at the UW Colleges.

#### **Wisline Web**

links an audio connection with common web-based courseware. Faculty and students converse while interacting with each other's documents and graphics in a real-time classroom setting.

#### **Compressed Video**

utilizes audio, computer, and video connections simultaneously. Faculty and students converse and interact with each other's coursework while viewing each other in a real-time classroom setting.

#### **On-Line**

courses provide a "virtual classroom" where students and faculty interact with each other totally over the Internet. Instructional courseware utilizes web pages, discussion groups, and UWC e-mail. Online courses do not meet at a particular time or place but they are structured within the academic semester time frame and require student class participation several times each week.

#### **Hybrid**

courses require students to spend one to two hours in class per week on a UWC campus and the remainder of the teaching and learning occurs on-line via the Internet.

#### **Computer Based Training**

is delivered to students on a course website in modules from CD-ROMs. Students complete the modules, submit their homework, and correspond with the instructor via UWC e-mail.

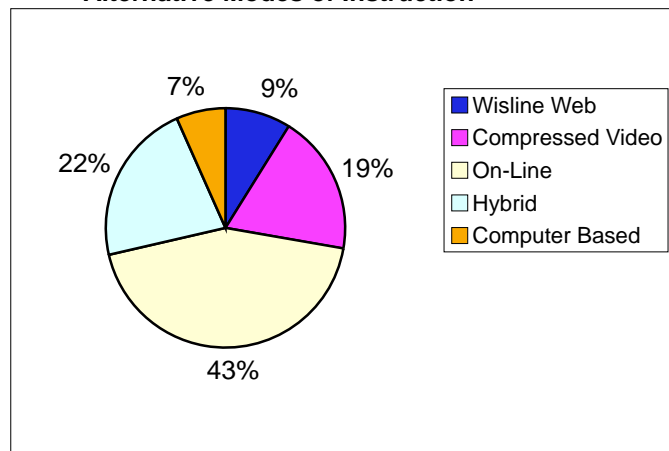


## Curriculum and Instruction Alternative Modes of Instruction

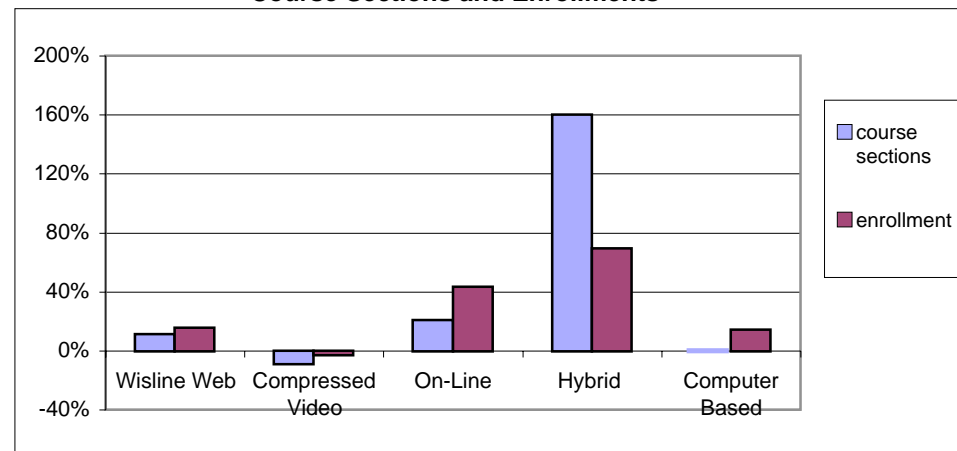
### 3 Year Course Enrollment Summary Credit Instruction

	Fall 2003		Fall 2004		Fall 2005	
	Course Sections	Course Enrollments	Course Sections	Headcount Enrollments	Course Sections	Headcount Enrollments
Wisline Web {formerly Audiographics}	9	184	10	206	10	213
Compressed Video	23	468	21	449	21	455
On-Line	34	730	41	863	41	1045
Hybrid	10	312	23	605	26	528
Computer Based	3	141	3	197	3	161

Fall 2005 Enrollments  
Alternative Modes of Instruction



Percent Change Fall 2003 - Fall 2005  
Course Sections and Enrollments



## Curriculum and Instruction Youth Options Program

### 3 Year Enrollment Summary

The Youth Options program gives eligible high school juniors and seniors the option of enrolling in courses at a UW Colleges campus. Enrollment is limited to courses that are not offered at the student's high school and are approved by the local school board for dual high school/college credit. To participate, students must complete the standard UW System Application for Undergraduate Admission and a Department of Public Instruction Program Plan and Report signed by a school board official or board designee. Tuition for these courses is paid by the local school board. The credits and grades earned become part of the student's high school and UWC official records, and are fully transferable within the guidelines applicable to all credits earned at the UW Colleges.

#### Youth Options Headcount Enrollments by Campus - Fall 2003 - Fall 2005

UWC Campus	fall 2003	spring 2004	summer 2004	fall 2004	spring 2005	summer 2005	fall 2005	Total
Baraboo/Sauk County	12	10	0	28	24	0	22	96
Barron County	36	47	1	28	53	0	17	182
Fond du Lac	35	28	0	31	31	1	14	140
Fox Valley	38	45	2	38	37	0	29	189
Manitowoc	7	10	0	7	9	0	17	50
Marathon County	18	20	0	16	21	0	12	87
Marinette	9	10	0	9	11	0	25	64
Marshfield/Wood County	14	17	0	24	24	0	20	99
Richland	7	11	0	4	9	0	6	37
Rock County	9	15	0	3	9	0	15	51
Sheboygan	14	17	0	22	21	0	9	83
Washington County	18	15	1	22	33	0	15	104
Waukesha	3	7	1	10	25	2	27	75
On-Line Program	0	1	2	1	1	0	1	6
<b>UWC</b>	<b>220</b>	<b>253</b>	<b>7</b>	<b>243</b>	<b>308</b>	<b>3</b>	<b>229</b>	<b>1263</b>

#### Youth Options Student Enrollments by Academic Department Fall 2003 - Fall 2005

	Headcount	% of total		Headcount	% of total
Anthropology/Sociology	182	8.6%	History	117	5.6%
Art	24	1.1%	Mathematics	240	11.4%
Biological Sciences	48	2.3%	Music	57	2.7%
Business/Economics	89	4.2%	Philosophy	224	10.6%
Chemistry	16	0.8%	Physical Education	28	1.3%
Communication/Theatre Arts	90	4.3%	Political Science	46	2.2%
Computer Science/Engineering/Physics/Astronomy	90	4.3%	Psychology	105	5.0%
English	227	10.8%	Women's Studies	3	0.1%
Geography/Geology	23	1.1%	World Languages	498	23.6%
			<b>All Departments</b>	<b>2107</b>	<b>100%</b>

Note: Classes offered through the World Languages, Mathematics, English and Philosophy departments make up over half of all youth options course enrollments.

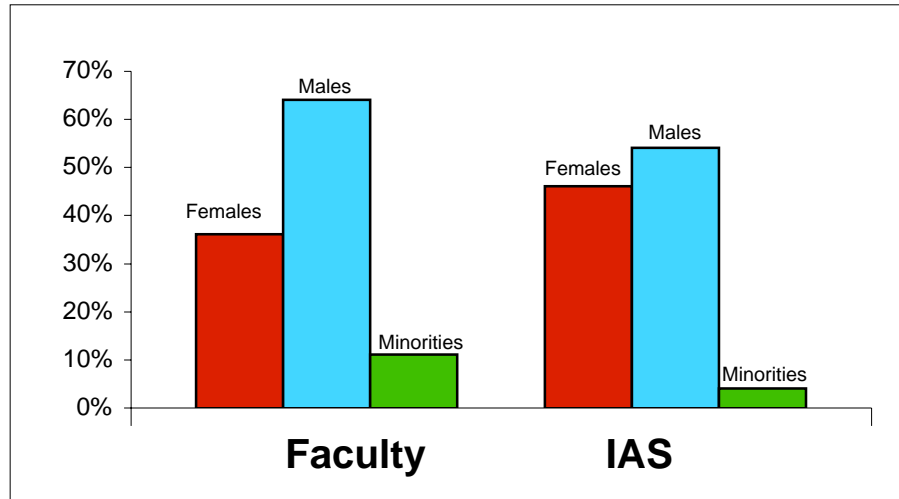
## Faculty and Instructional Academic Staff

### 5 Year Summary of Instructional Personnel

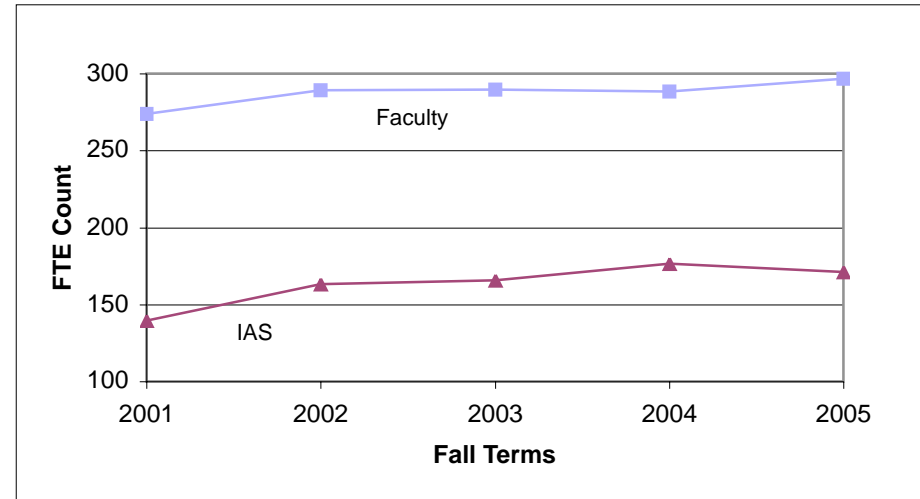
Type	Level	2001	2002	2003	2004	2005
Faculty	FTE	274	289	289.5	288.5	296.8
	Females	35%	36%	36%	36%	36%
	Males	65%	64%	64%	64%	64%
	Minority Status	9%	9%	11%	11%	11%
	Terminal Degrees	76%	77%	79%	78%	80%
IAS*	FTE	139.3	163	165.6	176.6	170.9
	Avg. Appt.	45.8%	50.8%	50.3%	50.6%	47.8%
	Females	52%	44%	44%	46%	46%
	Males	48%	56%	56%	54%	54%
	Minority Status	3%	4%	5%	4%	3%

\*Instructional academic staff

FTE Faculty and Instructional Academic Staff Fall 2005



Changes in FTE Faculty and Instructional Academic Staff  
Fall 2001 - Fall 2005

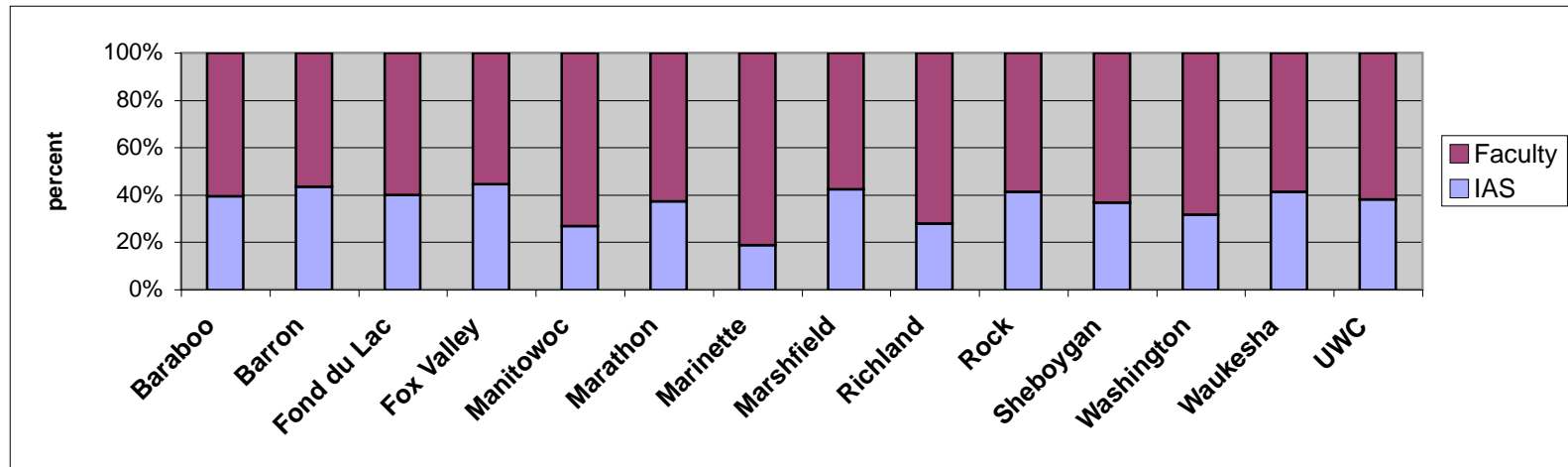


## Faculty and Instructional Academic Staff

### Fall 2005 UW Colleges Instructional Personnel Summary

	Baraboo	Barron	Fond du Lac	Fox Valley	Manitowoc	Marathon	Marinette	Marshfield	Richland	Rock	Sheboygan	Washington	Waukesha	UWC
<b>Faculty</b>														
FTE	17.5	14	16	34	19	35	17	15	14	21	18	26	42	<b>288.5</b>
Females	33%	57%	38%	29%	42%	26%	35%	40%	43%	48%	22%	35%	37%	<b>36%</b>
Males	67%	43%	62%	71%	58%	74%	65%	60%	57%	52%	78%	65%	63%	<b>64%</b>
Non-White	6%	21%	6%	9%	5%	9%	0%	33%	0%	19%	0%	12%	16%	<b>11%</b>
<b>Instructional Academic Staff (IAS)</b>														
FTE	11.4	10.8	10.7	27.3	7	20.9	3.9	11	5.4	14.7	10.5	12	29.5	<b>176.6</b>
Females	58%	25%	42%	58%	44%	51%	75%	58%	46%	40%	35%	24%	35%	<b>46%</b>
Males	42%	75%	58%	42%	56%	49%	25%	42%	54%	60%	65%	76%	65%	<b>54%</b>
Non-White	4%	0%	4%	2%	0%	3%	8%	0%	15%	4%	12%	10%	2%	<b>4%</b>

### Proportion of Faculty to IAS

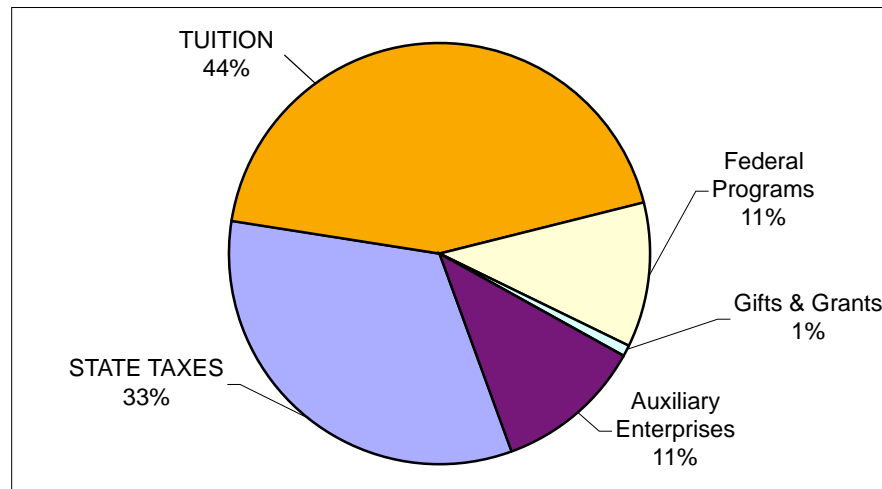


**Finance**  
**Budget Analyses**

**Budgeted Revenue by Source of Funds**  
**ALL BUDGETS**

	2002-03		2003-04		2004-05	
	Dollars	%	Dollars	%	Dollars	%
STATE TAXES	34,802,291	48%	26,769,419	36%	26,289,016	33%
<i>General Program</i>	32,545,068	45%	23,562,418	32%	23,038,421	29%
<i>Specific Purpose Restricted</i>	2,257,223	3%	3,207,001	4%	3,250,595	4%
TUITION	21,894,030	30%	30,330,316	41%	34,577,440	44%
Federal Programs	7,759,776	11%	8,831,475	12%	8,742,922	11%
Gifts & Grants	1,039,830	1%	913,196	1%	728,296	1%
Auxiliary Enterprises	7,062,062	10%	7,899,466	11%	9,025,457	11%
<b>Total</b>	<b>72,557,989</b>	<b>100%</b>	<b>74,743,872</b>	<b>100%</b>	<b>79,363,131</b>	<b>100%</b>

**2004-2005 Budgeted Revenues**

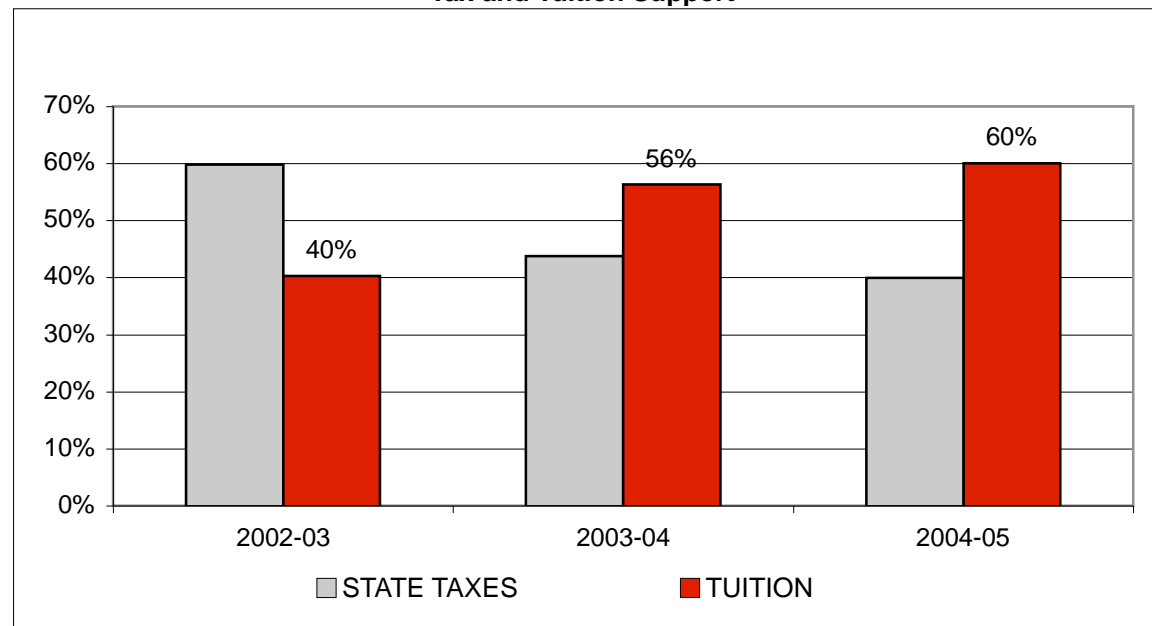


**Finance**  
**Budget Analyses**

**Budgeted Revenue by Source of Funds**  
**GENERAL ACADEMIC PROGRAM OPERATIONS BUDGET**

	<b>2002-03</b>		<b>2003-04</b>		<b>2004-05</b>	
	Dollars	%	Dollars	%	Dollars	%
STATE TAXES	32,545,068	60%	23,562,418	44%	23,038,421	40%
TUITION	21,894,030	40%	30,330,316	56%	34,577,440	60%
<b>Total</b>	<b>54,439,098</b>	<b>100%</b>	<b>53,892,734</b>	<b>100%</b>	<b>57,615,861</b>	<b>100%</b>

**Tax and Tuition Support**



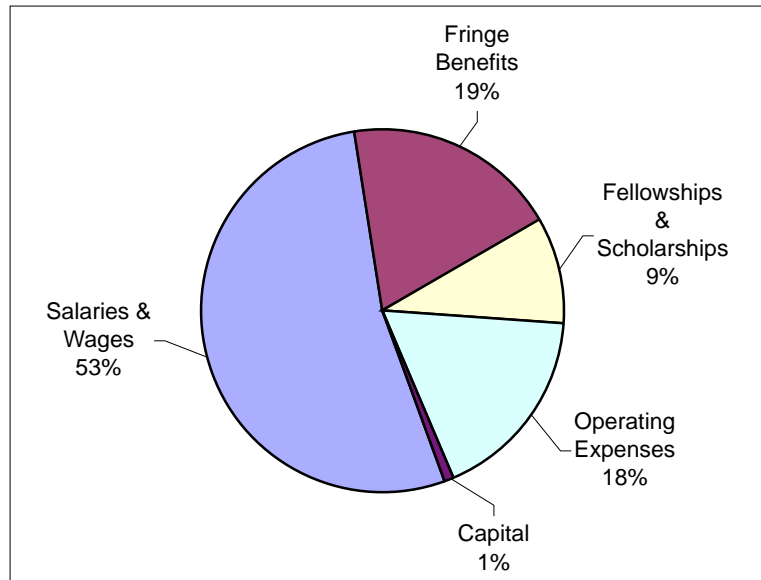
**Finance**

**Budget Analyses**

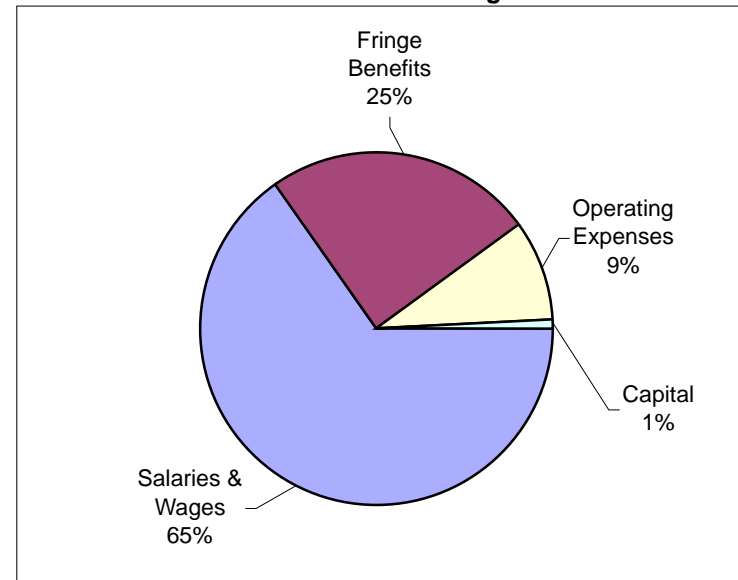
**Budget by Classification**

Program	2002-03	2003-04	2004-05
Salaries & Wages	\$39,884,094	\$40,894,554	\$42,165,267
Fringe Benefits	\$14,577,082	\$13,888,109	\$15,256,544
Fellowships & Scholarships	\$6,393,775	\$7,268,047	\$7,293,420
Operating Expenses	\$10,879,340	\$12,026,838	\$14,009,371
Capital	\$823,698	\$666,324	\$638,529
<b>TOTAL</b>	<b>\$72,557,989</b>	<b>\$74,743,872</b>	<b>\$79,363,131</b>

**All Funds**



**General Academic Program**



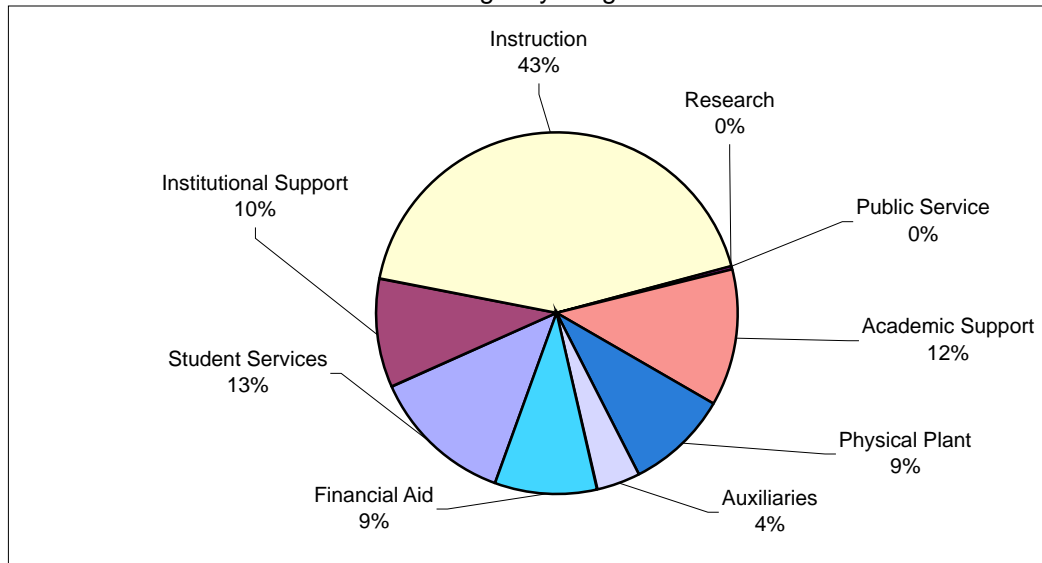
Finance

Budget Analyses

**Budgeted Expenditures by Program Area**

<b>Program</b>	<b>2002-03</b>	<b>2003-04</b>	<b>2004-05</b>
Student Services	\$9,565,650	\$9,712,947	\$10,196,273
Institutional Support	\$7,232,016	\$7,117,599	\$7,738,834
Instruction	\$32,775,726	\$32,054,140	\$33,815,651
Research	\$21,430	\$786	\$786
Public Service	\$198,981	\$214,024	\$299,949
Academic Support	\$8,323,832	\$9,027,823	\$9,752,917
Physical Plant	\$5,634,742	\$6,807,208	\$7,168,427
Auxiliaries	\$2,365,473	\$2,506,813	\$3,113,196
Financial Aid	\$6,440,139	\$7,302,532	\$7,277,098
<b>TOTAL</b>	<b>\$72,557,989</b>	<b>\$74,743,872</b>	<b>\$79,363,131</b>

2004-05 Budget by Program Area





## Finance Municipal Support

### Ownership and Insured Value of Facilities - 2005

UW College	Ownership	Insured Value	Outstanding Debt
Baraboo/Sauk County	City of Baraboo Sauk County	\$16,272,662	\$1,010,000
Barron County	Barron County	\$12,578,944	\$0
Fond du Lac	Fond du Lac County	\$22,377,205	\$10,362,381
Fox Valley	Outagamie County Winnebago County	\$25,001,073	\$12,729,080
Manitowoc	Manitowoc County	\$10,121,691	\$3,433,554
Marathon County	Marathon County	\$42,063,429	\$0
Marinette	Marinette County	\$18,106,663	\$2,250,000
Marshfield/Wood County	City of Marshfield Wood County	\$16,128,900	\$419,229
Richland	Richland County	\$11,343,720	\$1,255,000
Rock County	Rock County	\$13,799,128	\$1,317,620
Sheboygan	Sheboygan County	\$26,604,630	\$5,991,310
Washington County	City of West Bend Washington County	\$22,356,991	\$4,040,382
Waukesha	Waukesha County	\$32,222,497	*\$1,304,651
<b>Totals</b>		<b>\$268,977,533</b>	<b>\$44,113,507</b>

\*Waukesha County does not track bonding by project, so the debt service figure is an estimate.

Note: Section 66.51 of Wisconsin Statutes permits cities and counties to construct higher education facilities, subject to the approval of the Board of Regents. Since 1960 three cities and fourteen counties have collectively constructed more than 2.1 million square feet of space with an insured value of over \$268 million. Each municipality that participated in the creation of a UW College entered into a long-term agreement (at least 75 years) with the UW System. Although there are some variations in the terms of the agreements, they generally specify that the UW System is responsible for the academic program, movable equipment, physical plant services and utilities, while the municipality is responsible for repairs and improvements to the facilities.

**Finance**  
**Municipal Support**

**Budgeted City/County Expenditures - 2005**

UW College	Debt Service	Capital Outlay	Operations	Total
Baraboo/Sauk County	\$154,363	\$54,200	\$95,800	\$304,363
Barron County	\$0	\$142,000	\$32,260	\$174,260
Fond du Lac	\$1,006,787	\$102,227	\$51,100	\$1,160,114
Fox Valley	\$702,482	\$54,400	\$224,084	\$980,966
Manitowoc	\$352,380	\$41,398	\$20,372	\$414,150
Marathon County	\$0	\$1,070,368	\$64,437	\$1,134,805
Marinette	\$614,700	\$34,000	\$26,881	\$675,581
Marshfield/Wood County	\$675,000	\$398,000	\$69,355	\$1,142,355
Richland	\$53,712	\$16,025	\$29,575	\$99,312
Rock County	\$366,916	\$66,100	\$49,729	\$482,745
Sheboygan	\$689,548	\$225,812	\$106,981	\$1,022,341
Washington County	\$620,050	\$13,100	\$185,935	\$819,085
Waukesha	\$485,783	\$55,000	\$147,607	*\$688,390
<b>Grand Totals</b>	<b>\$5,721,721</b>	<b>\$2,272,630</b>	<b>\$1,104,116</b>	<b>*\$9,098,467</b>

\*Waukesha County does not track bonding by project, so the debt service figure is an estimate

DEFINITIONS

**Debt Service:** The interest and principal paid in a given year on outstanding debt incurred by funding major construction and renovation projects.

**Capital Outlay:** Minor physical plant remodeling or improvement projects such as roof and floor replacements, sidewalk repairs and replacement of building systems such as water heaters.

**Operations:** Physical plant operating costs such as insurance of property, maintenance contracts, and boiler/chiller chemicals.

**Finance**

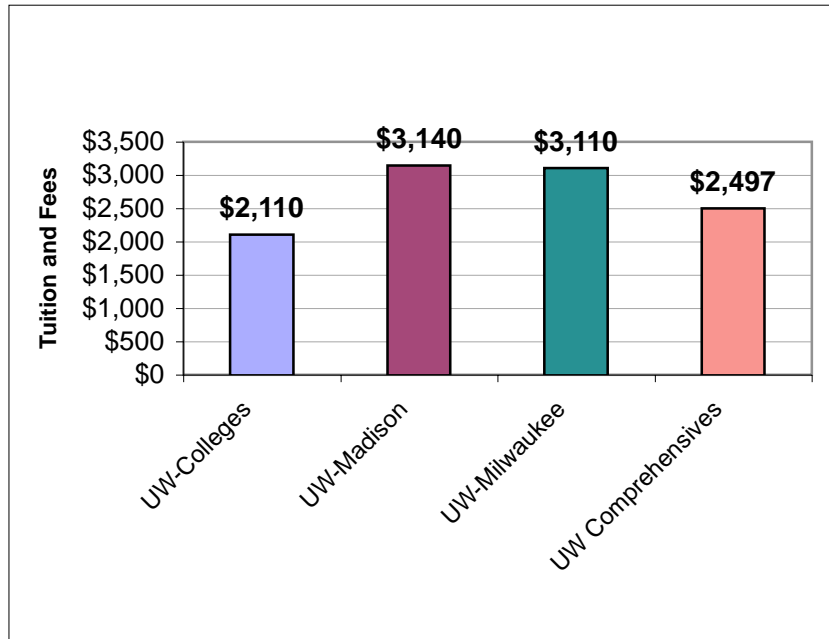
**Student Cost to Attend**

**5 Year Tuition and Fee Summary**

{one semester full-time tuition and fees}

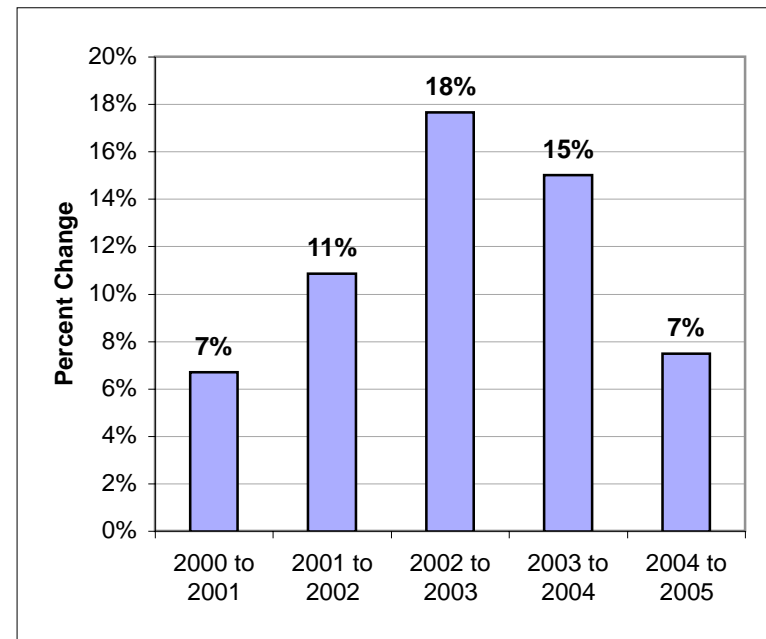
	Fall 2001	Fall 2002	Fall 2003	Fall 2004	Fall 2005
<b>Tuition</b>	\$1,211	\$1,350	\$1,600	\$1,850	\$1,989
<b>Average Fee</b> {varies by campus}	\$98	\$101	\$107	\$113	\$121
<b>Total Tuition and Fees</b>	<b>\$1,309</b>	<b>\$1,451</b>	<b>\$1,707</b>	<b>\$1,963</b>	<b>\$2,110</b>

**Fall 2005 Tuition and Fee Comparison with Other UW Institutions**



note: tuition and fees only; living expenses are not included

**Yearly Change in Tuition and Fees at the UW Colleges  
2000 to 2005**



note: in 5 years tuition and fees in the UW Colleges have increased 62%

**Finance**

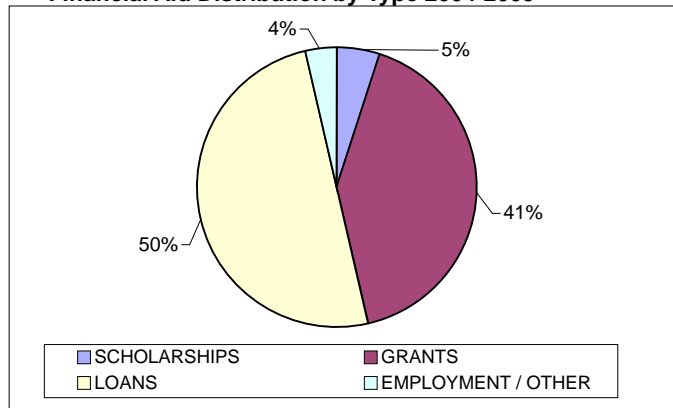
**Student Financial Aid**

**2004-2005 Financial Aid by Campus**

{excludes summer}

CAMPUS	UNDUP # AID RECIPES	% ENROLLED STUDENTS REC AID	SCHOLARSHIPS	GRANTS	LOANS	EMPLOYMENT / OTHER	TOTAL AID /CAMPUS	AVERAGE \$ / RECIP
Baraboo	294	40%	\$54,098	\$544,480	\$618,934	\$36,406	\$1,253,919	\$4,265
Barron	350	48%	\$59,482	\$818,280	\$785,729	\$71,908	\$1,735,400	\$4,958
Fond du Lac	406	47%	\$96,023	\$614,581	\$878,095	\$31,573	\$1,620,272	\$3,991
Fox Valley	873	43%	\$241,651	\$1,314,356	\$1,779,484	\$81,584	\$3,417,075	\$3,914
Manitowoc	387	52%	\$99,793	\$653,640	\$749,177	\$24,734	\$1,527,344	\$3,947
Marathon	756	49%	\$156,805	\$1,449,488	\$1,451,041	\$107,027	\$3,164,360	\$4,186
Marinette	269	48%	\$77,253	\$505,169	\$495,629	\$44,167	\$1,122,219	\$4,172
Marshfield	417	54%	\$86,546	\$891,625	\$891,026	\$75,557	\$1,944,754	\$4,664
Richland	334	59%	\$98,748	\$620,277	\$700,830	\$54,457	\$1,474,312	\$4,414
Rock	513	50%	\$57,017	\$1,074,796	\$1,172,455	\$85,607	\$2,389,875	\$4,659
Sheboygan	349	37%	\$79,464	\$609,604	\$673,130	\$56,442	\$1,418,640	\$4,065
Washington	415	38%	\$95,012	\$508,958	\$851,325	\$64,937	\$1,520,232	\$3,663
Waukesha	820	33%	\$123,837	\$946,699	\$1,724,935	\$171,578	\$2,967,049	\$3,618
On-Line	87	10%	\$8,593	\$179,483	\$235,428	\$3,475	\$426,979	\$4,908
<b>UW Colleges</b>	<b>6270</b>	<b>43%</b>	<b>\$1,334,322</b>	<b>\$ 10,731,435</b>	<b>\$ 13,007,218</b>	<b>\$ 909,453</b>	<b>\$ 25,982,428</b>	<b>\$4,144</b>

**Financial Aid Distribution by Type 2004-2005**



**Financial Aid Participation at the 13 Traditional Campuses**

Rank	% ENROLLED STUDENTS REC AID	TOTAL AID /CAMPUS	AVERAGE \$ / RECIP
<b>High</b>	Richland 59%	Fox Valley \$3,417,075	Barron \$4,958
<b>Median</b>	Barron & Marinette 48%	Fond du Lac \$1,620,272	Marinette \$4,172
<b>Low</b>	Waukesha 33%	Marinette \$1,122,219	Waukesha \$3,618

**Finance**

**Student Financial Aid**

**2 Year Summary of Financial Aid Awards by Type**

	2003 - 2004 ACADEMIC YEAR		2004 - 2005 ACADEMIC YEAR	
	# RECIPIENTS	\$\$ AMOUNT	# RECIPIENTS	\$\$ AMOUNT
<b>SCHOLARSHIPS---not need-based</b>				
INSTITUTIONAL	547	\$ 399,391	542	\$ 434,898
NON-INSTITUTIONAL/PRIVATE	724	\$ 780,131	747	\$ 841,229
ACADEMIC EXCELLENCE SCHOLARSHIP (STATE + INST MATCH)	15	\$ 45,495	22	\$ 58,195
<b>TOTAL SCHOLARSHIPS</b>	<b>1142</b>	<b>\$ 1,225,017</b>	<b>1158</b>	<b>\$ 1,334,322</b>
<b>GRANTS---need-based</b>				
FEDERAL PELL GRANT	2890	\$ 6,439,425	2903	\$ 6,403,892
FEDERAL SUPPLEMENTAL ED OPPORTUNITY GRANT	621	\$ 514,999	560	\$ 487,328
MISC. FEDERAL NEED BASED GRANTS	43	\$ 93,946	36	\$ 73,200
WI HIGHER EDUCATION GRANT	2442	\$ 2,979,030	2770	\$ 3,453,457
MISC. STATE NEED-BASED GRANTS	161	\$ 187,675	147	\$ 182,245
NEED BASED INSTITUTION GRANTS-SCHOLARSHIPS	136	\$ 105,196	159	\$ 131,313
<b>TOTAL GRANTS</b>	<b>2945</b>	<b>\$ 10,320,271</b>	<b>3026</b>	<b>\$ 10,731,435</b>
<b>LOANS</b>				
FEDERAL SUBSIDIZED STAFFORD	2551	\$ 5,091,081	2902	\$ 5,957,670
FEDERAL UNSUBSIDIZED STAFFORD	2409	\$ 5,609,178	2604	\$ 6,155,929
FEDERAL PERKINS LOAN	218	\$ 327,216	200	\$ 307,544
FEDERAL PLUS LOAN	79	\$ 299,584	98	\$ 402,839
ALTERNATIVE /MISC. STUDENT LOANS	27	\$ 74,206	56	\$ 183,236
<b>TOTAL LOANS</b>	<b>4055</b>	<b>\$ 11,401,266</b>	<b>4420</b>	<b>\$ 13,007,218</b>
<b>EMPLOYMENT AND OTHER RESOURCES</b>				
FEDERAL WORK-STUDY	542	\$ 496,246	560	\$ 486,729
FEDERAL VETERANS' BENEFITS	57	\$ 259,120	55	\$ 218,951
WI VETERANS' BENEFITS	1	\$ 2,703	1	\$ 3,922
STATE VOCATIONAL REHABILITATION GRANT (DVR)	59	\$ 108,080	61	\$ 165,777
NON-RESIDENT FEE REMISSION	8	\$ 74,889	6	\$ 34,074
<b>TOTAL EMPLOYMENT AND OTHER RESOURCES</b>	<b>646</b>	<b>\$ 941,038</b>	<b>656</b>	<b>\$ 909,453</b>
<b>UNDUPLICATED NUMBER OF RECIPIENTS and TOTALS for ALL AID TYPES</b>	<b>5997</b>	<b>\$ 23,887,591</b>	<b>6270</b>	<b>\$ 25,982,428</b>
<b>Percent of Total Headcount Enrollment Receiving Financial Aid</b>	<b>41%</b>		<b>43%</b>	

## University of Wisconsin-Baraboo/Sauk County

**Address:** 1006 Connie Road  
Baraboo, WI 53913-1098  
**Phone:** 608/356-8351  
**Website:** <http://www.baraboo.uwc.edu>

**Dean:** Michael Brophy  
**Board of Visitors Representative:** Merlin Zitzner  
**Student Government President:** Kristin Finkbeiner  
**Municipal Partner(s):** City of Baraboo and Sauk County

### Student Profile

<b>Headcount</b>	<b>Enrollment:</b>		<b>Connections: Top 3 High Schools for New Freshmen</b>
	<b>Full-time students:</b>	<b>345 (56%)</b>	Wauwaukee, Baraboo, Mosinee
	<b>Part-time students:</b>	<b>270 (44%)</b>	
	<b>Students age 22+</b>	<b>216 (35%)</b>	
	<b>Students receiving financial aid</b>	<b>40%</b>	<b>Top 3 UW System Transfer Destinations</b>
	<b>Non-Credit Enrollments 2004-2005</b>	<b>925</b>	Madison, Stevens Point, Platteville

### Instructional Profile

<b>Faculty:</b>	17.5 FTE	<b>Instructional Academic Staff:</b>	11.4 FTE
	33% female		58% female
	6% minority		4% minority
	88% with terminal degrees		

<b>Local Foundational Support:</b>	\$20,00 in student scholarships; \$5,000 in campus support
<b>Collaborative Initiatives:</b>	Baccalaureate completion programs with UW-Milwaukee in business; Youth Options; Latino pre-college; University of Plymouth (UK) student and faculty exchange program

**UW-Baraboo/Sauk County** is located in the Baraboo hills of southern Wisconsin. Now in its third year, the campus strategic plan calls for three simple goals: increasing student success; increasing support of the campus from public and private constituencies, and continued development of an exciting, innovative and engaging community for students, staff, faculty, and community members.

Undergraduate enrollment has grown 15% in the past three years, in part due to increased academic opportunities and achievement. Changes have included an increasingly diverse curriculum, new academic opportunities, and new faculty members. New courses in the arts, sciences and foreign languages have been added to the curriculum, and the UW-Baraboo/Sauk County now has the most comprehensive first-year experience of any UW campus.

Each year more and more degree students take part in a growing array of athletic, cultural and co-curricular activities, including soccer and tennis, Native American club, and the honors program. In addition, through continuing education and cultural programs, growing numbers of community members come to the campus for lifelong enrichment.

The constituencies of the UW Baraboo/Sauk County continue to show support for the campus in diverse ways. Theatre, technology upgrades, student internships and campus publications are just a few of the initiatives supported by the private and public supporters of the campus. In addition, not-for-profit groups work with the campus on programs ranging from pre-college for underprivileged children to world cinema and local theatre projects. A decade ago Sauk County and the City of Baraboo committed to expanding and improving the facilities of the UW-Baraboo/Sauk County. The campus responded with increased enrollment and greater opportunity for lifelong learning. With this growth the economic impact of the campus on the Sauk County region has grown to nearly \$8 million annually.

## University of Wisconsin-Barron County

**Address:** 1800 College Drive  
Rice Lake, WI 54868-2497  
**Phone:** 715/234-8176  
**Website:** <http://www.barron.uwc.edu>

**Dean:** Paul W. Chase, Ph.D.  
**Board of Visitors Representative:** Alan Sykes  
**Student Government President:** Michael Tetzlaff  
**Municipal Partner(s):** Barron County

### Student Profile

<b>Headcount</b>	<b>Enrollment:</b>		<b>Connections: Top 3 High Schools for New Freshmen</b>
	<b>Full-time students:</b>	<b>312 (54%)</b>	Rice Lake, Cameron, Chetek Senior
	<b>Part-time students:</b>	<b>261 (46%)</b>	
	<b>Students age 22+</b>	<b>88 (15%)</b>	<b>Top 3 UW System Transfer Destinations</b>
	<b>Students receiving financial aid</b>	<b>48%</b>	Eau Claire, River Falls, Stout
	<b>Non-Credit Enrollments 2004-2005</b>	<b>714</b>	

### Instructional Profile

<b>Faculty:</b>	14 FTE	<b>Instructional Academic Staff:</b>	10.8 FTE
	57% female		25% female
	21% minority		0% minority
	73% with terminal degrees		

**Local Foundational Support:** \$26,500 in student scholarships; \$13,720 in campus support  
**Collaborative Initiatives:** Baccalaureate degree completion programs with UW-Milwaukee, Platteville, Superior and Green Bay; collaboration with regional CESAs offering college-level courses in high schools via distance education.

**UW-Barron County** lies on the bank of the Red Cedar River in Rice Lake, two hours east of the Twin Cities. Eagles fly up and down the river daily, and hawks, osprey, fox and deer are frequent visitors. In addition to these wild attractions, the campus hosts a lovely international friendship garden created by gardeners from Rice Lake's sister city Miharu, Japan. The garden complements an active campus fine arts program that has made the UW-Barron County a center for culture in the region.

The UW-Barron County recruits students from 50 high schools in 16 counties, making it an important access point for higher education in the sparsely populated northwest corner of Wisconsin. In addition to this expansive recruiting area, the campus has extended its outreach significantly by providing college-level courses through interactive television to a dozen smaller high schools in the region. The campus also has a close working relationship with the Wisconsin Indianhead Technical College in Rice Lake, sharing both facilities and programming.

UW-Barron County is undertaking its first new construction since its existing seven buildings were opened in 1968. The new project will connect the administration building with the primary classroom building and enhance the existing buildings. It will include new science laboratories and classrooms designed with the assistance of a National Science Foundation/Keck Foundation Project Kaleidoscope consultancy. It will also feature new smart classrooms, student government and organization spaces, and customer-friendly student service and business office locations.

## University of Wisconsin-Fond du Lac

**Address:** 400 University Drive  
Fond du Lac, WI 54935-2950  
**Phone:** 920/929-3600  
**Website:** <http://www.fdl.uwc.edu>

**Dean:** Daniel J. Blankenship Ph.D  
**Board of Visitors Representative:** John Wright  
**Student Government President:** Tyler Knipple  
**Municipal Partner(s):** Fond du Lac County

### Student Profile

<b>Headcount</b>	<b>Enrollment:</b>		<b>Connections: Top 3 High Schools for New Freshmen</b>
	<b>Full-time students:</b>	<b>517 (68%)</b>	Fond du Lac, New Holstein, Winnebago
	<b>Part-time students:</b>	<b>241 (32%)</b>	
	<b>Students age 22+</b>	<b>211 (28%)</b>	<b>Top 3 UW System Transfer Destinations</b>
	<b>Students receiving financial aid</b>	<b>37%</b>	Oshkosh, Milwaukee, Madison
	<b>Non-Credit Enrollments 2004-2005</b>	<b>2066</b>	

### Instructional Profile

<b>Faculty:</b>	16 FTE	<b>Instructional Academic Staff:</b>	10.7 FTE
	38% female		42% female
	6% minority		4% minority
	67% with terminal degrees		

<b>Local Foundational Support:</b>	\$26,000 in student scholarships; \$11,600 in campus support
<b>Collaborative Initiatives:</b>	Baccalaureate degree completion programs hosted on campus with UW-Green Bay, Milwaukee, Oshkosh, Stevens Point, Stout and Superior

**UW-Fond du Lac** is located on 183 acres of prime natural and maintained land on the outskirts of the city of Fond du Lac. Students from 27 high schools in six counties have chosen to attend UW-Fond du Lac, most working while enrolled. Expanded services to students include a well developed student support center with instructional assistance, career guidance, a college career orientation/exploration program for incoming students, and a transitions program, which provides assistance to students throughout their experience on campus. The campus encourages service learning instruction and interdisciplinary study as tools for increasing student success.

Developments on campus are guided by the 2003-2005 Strategic Plan which has four goals: creating a diverse community of learners; being an academic and cultural resource; being a leader in learner-centered service and instruction, and sustaining a healthy campus community. As an example of recent success in serving as a cultural resource for the community, UW-Fond du Lac recently launched its first performing arts series.

Unique to the UW-Fond du Lac campus is a student newspaper (the "*Falcon Flyer*") that is published monthly as an insert in the local newspaper, the "Reporter". Inclusion in the local newspaper provides the "Falcon Flyer" with a wide circulation involving two counties and approximately 40,000 readers, which helps to keep the community in touch with the campus and students on a regular basis.



## University of Wisconsin-Fox Valley

**Address:** 1478 Midway Road  
Menasha, WI 54952-1297  
**Phone:** 920/832-2600  
**Website:** <http://www.uwfox.uwc.edu>

**Dean:** James W. Perry, Ph.D.  
**Board of Visitors Representative:** Keith Summers  
**Student Government President:** Dannon Raith  
**Municipal Partner(s):** Outagamie and Winnebago Counties

### Student Profile

<b>Headcount</b>	<b>Enrollment:</b>		<b>Connections: Top 3 High Schools for New Freshmen</b>
	<b>Full-time students:</b>	<b>1012 (59%)</b>	Appleton North, Neenah, Appleton East
	<b>Part-time students:</b>	<b>707 (41%)</b>	
	<b>Students age 22+</b>	<b>541 (31%)</b>	
	<b>Students receiving financial aid</b>	<b>43%</b>	<b>Top 3 UW System Transfer Destinations</b>
	<b>Non-Credit Enrollments 2004-2005</b>	<b>1946</b>	Oshkosh, Green Bay, Milwaukee

### Instructional Profile

<b>Faculty:</b>	34 FTE	<b>Instructional Academic Staff:</b>	27.3 FTE
	29% female		58% female
	9% minority		2% minority
	76% with terminal degrees		

<b>Local Foundational Support:</b>	\$131,000 in student scholarships; \$21,776 in campus support
<b>Collaborative Initiatives:</b>	On-campus baccalaureate degree programs with UW-Stevens Point, Platteville, and Oshkosh

**UW-Fox Valley** in Menasha is the second largest of the UW Colleges campuses. The campus is home to the Barlow Planetarium, the state's largest and most technologically advanced sky theatre, attracting 40,000 guests each year. UW-Fox Valley also boasts the state mineralogical museum – the Weis Earth Science Museum.

Each year the UW-Fox Valley plays host to a number of cultural events. The Aaron Bohrod Gallery hosts up to eight public art exhibits each year. Sponsored by the UW-Fox Valley Foundation, the campus also hosts a Scholars Series, bringing in regional and national experts 14 times each year to provide campus and public seminars on issues of importance in all fields of academic endeavor.

The campus is known for a first-year student seminar that is a universal requirement for all new students, as well as a host of interdisciplinary learning communities joining two or three courses from different disciplines, all taught with a unifying theme. In addition, many UW-Fox Valley students are actively engaged in undergraduate research. A Student Scholars Fund allows them to attend and participate at regional and national conferences in fields of their interest.

## University of Wisconsin-Manitowoc

**Address:** 705 Viebahn Street  
Manitowoc, WI 54220-6601  
**Phone:** 920/683-4700  
**Website:** <http://www.uwmanitowoc.uwc.edu>

**Dean:** Mary Beth Emmerichs, Ph.D. (Interim)  
**Board of Visitors Representative:** Tom Davis  
**Student Government President:** Timothy Rocklewitz  
**Municipal Partner(s):** Manitowoc County

### Student Profile

<b>Headcount</b>	<b>Enrollment:</b>		<b>Connections: Top 3 High Schools for New Freshmen</b>
	<b>Full-time students:</b>	<b>460 (72%)</b>	Lincoln (Manitowoc), Two Rivers, Mishicot
	<b>Part-time students:</b>	<b>183(28%)</b>	
	<b>Students age 22+</b>	<b>160 (25%)</b>	
	<b>Students receiving financial aid</b>	<b>52%</b>	<b>Top 3 UW System Transfer Destinations</b>
	<b>Non-Credit Enrollments 2004-2005</b>	<b>1975</b>	Green Bay, Milwaukee, Oshkosh

### Instructional Profile

<b>Faculty:</b>	19 FTE	<b>Instructional Academic Staff:</b>	7 FTE
	42% female		44% female
	5% minority		0% minority
	68% with terminal degrees		

<b>Local Foundational Support:</b>	\$10,000 in student scholarships; \$10,250 in campus support
<b>Collaborative Initiatives:</b>	On campus baccalaureate degree completion programs with UW-Milwaukee and Oshkosh; extended degree programs with UW-Platteville, Green Bay and Superior.

**UW-Manitowoc** is beautifully situated beside a city park on the shores of Lake Michigan. In 2001 the campus completed a \$4,000,000 facility expansion adding a theatre, music room, learning center, commons area and administrative offices. The campus is home to an office of the Wisconsin Sea Grant, a statewide program of basic and applied research, education, outreach, and technology transfer dedicated to the stewardship and sustainable use of the nation's Great Lakes and ocean resources. South of the campus, the Point Creek Conservancy area provides an open air classroom for faculty and students.

Over one third of the 643 students on this non-residential campus participate in clubs, governance and campus service, Wednesday Campus Night activities, sports and community service. Students also have the opportunity to participate in research that benefits the community. Students in Biology have worked as research assistants on a project analyzing the spread of sea lampreys while other students have helped in a purple loosestrife eradication program.

The UW-Manitowoc faculty includes a Wisconsin Carnegie Professor of the Year and two UW Regents' Teaching Award winners. In addition to teaching credit courses on campus, many faculty and staff also support a continuing education program that serves thousands of community members each year. Classes include theatre programs for children, diversity circles, and dozens of non-credit classes. Another example of outreach is Upward Bound, a TRIO program supported by a federal grant that prepares low-income and first-generation students from Manitowoc and Two Rivers high schools to enter college.

## University of Wisconsin-Marathon County

**Address:** 518 South 7th Avenue  
Wausau, WI 54401-5396  
**Phone:** 715/261-6100  
**Website:** <http://www.uwmc.uwc.edu>

**Dean:** James F. Veninga, Ph.D.  
**Board of Visitors Representative:** Hooshang Zeyghami  
**Student Government President:** Leroy Jonas IV  
**Municipal Partner(s):** Marathon County

### Student Profile

<b>Headcount</b>	<b>Enrollment:</b>		<b>Connections: Top 3 High Schools for New Freshmen</b>
	<b>Full-time students:</b>	<b>818 (63%)</b>	Wausau West, DC Everest, Wausau East
	<b>Part-time students:</b>	<b>477 (37%)</b>	
	<b>Students age 22+</b>	<b>339 (26%)</b>	
	<b>Students receiving financial aid</b>	<b>49%</b>	<b>Top 3 UW System Transfer Destinations</b>
	<b>Non-Credit Enrollments 2004-2005</b>	<b>3409</b>	Stevens Point, Madison, Eau Claire

### Instructional Profile

<b>Faculty:</b>	35 FTE	<b>Instructional Academic Staff:</b>	20.9 FTE
	26% female		51% female
	9% minority		3% minority
	76% with terminal degrees		

<b>Local Foundational Support:</b>	\$63,370 in student scholarships and \$13,346 in campus support
<b>Collaborative Initiatives:</b>	Baccalaureate degree completion programs with UW-Oshkosh in nursing, with UW-Stevens Point in general studies, business, and web and digital development.

**UW-Marathon County**, located in central Wausau beside a 78 acre forested park, is the third largest UW Colleges campus. The faculty and staff take pride in the liberal arts instruction provided to its 1300+ students. In addition to teaching, research and professional development, civic engagement is a high priority. Every year the campus sponsors public forums and fine arts programming, bringing outstanding artists, scholars and performers to the campus.

In keeping with the goals of the UW System's Plan 2008, minority student enrollment at UW-Marathon County has increased 100% since 1996 with 11% of the student body now minority. Course offerings have changed as well, with a greater variety of multicultural perspectives within the curriculum.

UW-Marathon County continues to benefit from the investment of public funding through Marathon County. In 1996, the county supported a \$7 million facilities renovation and expansion. In 2003, the County provided \$1.4 million for a new art building and mathematics center. In 2004-05 the County provided \$1.2 million for the remodeling and expansion of the field house. A \$2.9 million project to upgrade science labs is scheduled for 2006-07. Many projects have benefited from significant private sector support as well, and the UW-Marathon County Foundation, with assets of \$1.95 million, has greatly expanded its contribution to the campus by providing support for faculty development, technology projects, and scholarships to students and study abroad opportunities.

The UW-Marathon County Student Association continues to provide exceptional opportunities through more than twenty clubs. The campus participates in the Wisconsin Collegiate Conference, fielding golf, soccer, volleyball, and basketball teams. There is also has an active intramural sports program.

## University of Wisconsin-Marquette

**Address:** 750 West Bay Shore Street  
Marinette, WI 54143-4299  
**Phone:** 715/735-4300  
**Website:** <http://www.marquette.uwc.edu>

**Dean:** Paula T. Langteau  
**Board of Visitors Representative:** Ted Sauve  
**Student Government President:** Russ From  
**Municipal Partner(s):** Marinette County

### Student Profile

<b>Headcount</b>	<b>Enrollment:</b>		<b>Connections: Top 3 High Schools for New Freshmen</b>
	<b>Full-time students:</b>	<b>300 (59%)</b>	Marinette Senior, Menominee, Crivitz
	<b>Part-time students:</b>	<b>212 (41%)</b>	
	<b>Students age 22+</b>	<b>134 (26%)</b>	
	<b>Students receiving financial aid</b>	<b>48%</b>	<b>Top 3 UW System Transfer Destinations</b>
	<b>Non-Credit Enrollments 2004-2005</b>	<b>2492</b>	Green Bay, Oshkosh, Stevens Point

### Instructional Profile

<b>Faculty:</b>	17 FTE	<b>Instructional Academic Staff:</b>	3.9 FTE
	35% female		75% female
	0% minority		8% minority
	75% with terminal degrees		

<b>Local Foundational Support:</b>	\$13,000 in student scholarships; \$10,580 in campus support
<b>Collaborative Initiatives:</b>	Degree completion programs with UW-Milwaukee, Green Bay, Superior, Platteville, and Stevens Point and with Silver Lake College; Partnership Program with area high schools

**UW-Marquette** is located in the city of Marinette on the west shore of Green Bay, an hour's drive north of the city of Green Bay. The campus enrolls many students from adjoining Menominee County, Michigan (who pay Wisconsin in-state tuition), as well as the largest percentage of international students of any campus in the UW. UW-Marquette students receive individualized attention in small classes, choosing courses from an innovative curriculum, with learning community courses linking two or three disciplines to explore real-world issues in courses proven to enhance student success. Academic opportunities are also offered through evening courses, distance education courses, and undergraduate research opportunities. Students benefit from one-on-one interaction and collaboration, as well as computer-based tutorial services in writing, math, computer science, natural science and world languages.

In addition to the small classes and individualized attention, UW-Marquette offers leadership and co-curricular opportunities, including the Phi Theta Kappa honor society, a student senate, and the Crew, a student organization that provides volunteer services to needy community members. UW-Marquette also offers a host of cultural enrichment activities, serving as a cultural hub for the surrounding communities. Since 1967, Theatre on the Bay has given students experience in all areas of theatre from box office to acting in major productions. A playwrights' workshop is offered in the spring culminating in the Bards on the Bay festival. Other programs open to the public include the West Shore Chorale, Bay Shore Orchestra, Community Jazz Ensemble, and the Northeast Wisconsin Concert Band.

## University of Wisconsin-Marshfield/Wood County

**Address:** 2000 W. Fifth Street  
Marshfield, WI 54449-3310

**Phone:** 715/389-6500

**Website:** <http://www.marshfield.uwc.edu>

**Dean:** Andrew Keogh, Ed.D.

**Board of Visitors Representative:** Karl Zimmermann

**Student Government President:** Wendy Waterman

**Municipal Partner(s):** City of Marshfield and Wood County

### Student Profile

<b>Headcount</b>	<b>Enrollment:</b>		<b>Connections: Top 3 High Schools for New Freshmen</b>
	<b>Full-time students:</b>	<b>388 (60%)</b>	Marshfield Senior, Stratford, Lincoln
	<b>Part-time students:</b>	<b>261 (40%)</b>	
	<b>Students age 22+</b>	<b>204 (31%)</b>	<b>Top 3 UW System Transfer Destinations</b>
	<b>Students receiving financial aid</b>	<b>54%</b>	Stevens Point, Eau Claire, Stout
	<b>Non-Credit Enrollments 2004-2005</b>	<b>1761</b>	

### Instructional Profile

<b>Faculty:</b>	15 FTE	<b>Instructional Academic Staff:</b>	11 FTE
	40% female		58% female
	33% minority		0% minority
	82% with terminal degrees		

<b>Local Foundational Support:</b>	\$74,341 in student scholarships; \$101,700 in campus support
<b>Collaborative Initiatives:</b>	Collaborative degree programs with UW-Eau Claire and Stevens Point; dual enrollment with UW-Stevens Point; Youth Options programs with Neillsville and Stratford high schools

**UW-Marshfield/Wood County**, located in central Wisconsin, is a campus of 114 acres, including a 109 acre natural forest arboretum. The faculty and staff are dedicated to the Wisconsin Idea of bringing higher education to the state's residents. The distinguished faculty teaches small classes, giving students personal attention. The UW-Marshfield/Wood County faculty boasts two U.S. Fulbright Scholars. Having taught overseas, each of these professors will be taking students abroad in the spring semester of 2006.

The campus offers students access to the latest technology. Beginning in summer 2005, the campus began remodeling and renovating its six science labs, thanks to a congressionally designated grant of \$400,000. Computer networking, mobile distance-education teaching stations and digital microscopes are part of the equipment purchases, which will continue to arrive through spring 2006.

In summer 2005, renovation and remodeling of the Hamilton Roddis Memorial Library was completed. The renovated library includes a teaching lab, where students and faculty can upgrade their research skills. The Learning Center, which focuses on building and enhancing classroom skills, and small study areas where students can work together on team and group projects. The \$510,000 renovation project was funded in cooperation with Wood County, the City of Marshfield, the State of Wisconsin and a private donor.

## University of Wisconsin-Richland

**Address:** 1200 Highway 14 West  
Richland Center, WI 53581-1399

**Phone:** 608/647-6186

**Website:** <http://www.richland.uwc.edu>

**Dean:** Deborah B. Cureton, Ph.D  
**Board of Visitors Representative:** Darlo Wentz  
**Student Government President:** Justine Johnson  
**Municipal Partner(s):** Richland County

### Student Profile

**Headcount Enrollment:**

<b>Full-time students:</b>	<b>313 (67%)</b>
<b>Part-time students:</b>	<b>151 (33%)</b>
<b>Students age 22+</b>	<b>95 (20%)</b>
<b>Students receiving financial aid</b>	<b>59%</b>
<b>Non-Credit Enrollments 2004-2005</b>	<b>2383</b>

**Connections: Top 3 High Schools for New Freshmen**  
Richland Center, River Valley, Ithaca

**Top 3 UW System Transfer Destinations**  
Platteville, LaCrosse, Madison

### Instructional Profile

**Faculty:** 14 FTE  
43% female  
0% minority  
80% with terminal degrees

**Instructional Academic Staff:** 5.4 FTE  
46% female  
15% minority

**Local Foundational Support:** \$70,900 in student scholarships; \$21,700 in campus support

**Collaborative Initiatives:** UW-Milwaukee College Connection; UW-Platteville pre-engineering; Academic Alliance program with Richland Center and River Valley High Schools.

**UW-Richland**, a 135 acre campus located in the rolling hills of Richland County, attracts students of all ages from around the world and across the street. International programs involve community members as host and mentor families, bringing a cosmopolitan, global atmosphere to the community. Continuing education programs taught by UW-Richland faculty and staff attract people from the area to non-credit courses and to new ideas. Community members join in campus activities through the annual Shared Reading Program, Campus/Community Theatre, Campus Community Band, and more.

UW-Richland is unusual among the UW Colleges in offering housing for 120 students. These modern, convenient facilities house students through the summer as well as during the academic year. Summer programs are local, regional, statewide and international in scope. They include College for Kids, Pre-College, Wisconsin Teen Institute, Faculty College, Youth for Understanding, Japanese High School Program, Instructional Technology training and more.

Located on the UW-Richland campus, the Symons Recreation Complex is available to UW-Richland students through special memberships. This community facility features a heated indoor pool, weight training and fitness center, sauna, racquetball courts and fitness classes.

## University of Wisconsin-Rock County

**Address:** 2909 Kellogg Avenue  
Janesville, WI 53546-5699

**Phone:** 608/758-6566

**Website:** <http://www.rock.uwc.edu>

**Dean:** Diane Pillard

**Board of Visitors Representative:** Audrey McClellan

**Student Government President:** Elisa Parrish

**Municipal Partner(s):** Rock County

### Student Profile

<b>Headcount</b>	<b>Enrollment:</b>		<b>Connections: Top 3 High Schools for New Freshmen</b>
	<b>Full-time students:</b>	<b>528 (59%)</b>	Janesville Parker, Janesville Craig, Beloit Memorial
	<b>Part-time students:</b>	<b>373 (41%)</b>	
	<b>Students age 22+</b>	<b>314 (35%)</b>	
	<b>Students receiving financial aid</b>	<b>50%</b>	<b>Top 3 UW System Transfer Destinations</b>
	<b>Non-Credit Enrollments 2004-2005</b>	<b>562</b>	Whitewater, Madison, Milwaukee

### Instructional Profile

<b>Faculty:</b>	21 FTE	<b>Instructional Academic Staff:</b>	14.7 FTE
	48% female		40% female
	19% minority		4% minority
	88% with terminal degrees		

**Local Foundational Support:** \$28,190 in student scholarships; \$2,629 in campus support

**Collaborative Initiatives:** Baccalaureate degree completion programs hosted on campus with UW-Milwaukee, Whitewater and Platteville.

**UW-Rock County** is conveniently situated between Janesville and Beloit on the southwest side of Janesville. The student body is ethnically diverse and includes many returning adults. Courses are offered days and evenings throughout the year. Small classes, a Learning Support Center offering free tutoring, and an active TRIO program all contribute to helping students succeed in the critical first two years of college. The campus facilities include state-of-the-art science laboratories and computer labs, multimedia and distance education classrooms, library, gymnasium and fitness room, café, bookstore, and 250 seat theatre.

UW-Rock County offers a wide range of co-curricular opportunities. Students can choose to participate in student government, a variety of sports clubs and teams, theatre and fine arts groups, and a number of academic, cultural and honors groups.

Continuing education at UW-Rock County provides classes and programs for community members of all ages. Programs for adults include art, computer training and cultural travel. Continuing education also includes College for Kids summer camps, theatre productions, the Rock Prairie Concert Band, chamber and youth orchestras, choir and a Performing Arts Series.



## University of Wisconsin-Sheboygan

**Address:** One University Drive  
Sheboygan, WI 53081-4789  
**Phone:** 920/459-3633  
**Website:** <http://www.sheboygan.uwc.edu>

**Dean:** Raymond T. Hernandez  
**Board of Visitors Representative:** Mark Hanna  
**Student Government President:** Theo Bialk  
**Municipal Partner(s):** Sheboygan County

### Student Profile

<b>Headcount</b>	<b>Enrollment:</b>		<b>Connections: Top 3 High Schools for New Freshmen</b>
	<b>Full-time students:</b>	<b>402 (57%)</b>	Sheboygan South, Sheboygan North, Plymouth Comprehensive
	<b>Part-time students:</b>	<b>302(43%)</b>	
	<b>Students age 22+</b>	<b>261 (37%)</b>	
	<b>Students receiving financial aid</b>	<b>37%</b>	<b>Top 3 UW System Transfer Destinations</b>
	<b>Non-Credit Enrollments 2004-2005</b>	<b>714</b>	Milwaukee, Oshkosh, Green Bay

### Instructional Profile

<b>Faculty:</b>	18 FTE	<b>Instructional Academic Staff:</b>	10.5 FTE
	22% female		35% female
	0% minority		12% minority
	68% with terminal degrees		

<b>Local Foundational Support:</b>	\$35,000 in student scholarships; \$25,250 in campus support
<b>Collaborative Initiatives:</b>	Baccalaureate degree completion programs hosted on campus with UW-Milwaukee, Stout and Oshkosh; Credit outreach to Sheboygan North, Oostburg and Cedar Grove/Belgium high schools

**UW-Sheboygan** is located on a 70 acre hilltop setting overlooking the western edge of Sheboygan. In Fall 2004, the campus celebrated the opening of the Frank G. and Frieda K. Brotz Science Building. This state-of-the-art facility marks a major collaborative effort between Sheboygan County, UW-Sheboygan, the UW-Sheboygan Foundation, and the Frank G. & Frieda K. Brotz Family Foundation. The building features spacious new classrooms fitted with the latest in lab equipment and instructional technology. The next building project for UW-Sheboygan, the new Acuity Technology Center, is scheduled to begin construction in spring 2006. The building, made possible by a major grant from Acuity of Sheboygan, will offer state-of-the-art instructional classrooms and meeting space. Completion of the Acuity Technology Center is expected by summer 2007.

UW-Sheboygan offers a wide range of co-curricular opportunities. Students can choose to be active in campus government, music and drama, various academic and service clubs, and both intercollegiate and intramural sports. The campus includes a fine arts building with 350 seat theatre and a complete physical education facility. On the university grounds students will find tennis courts, areas for field sports, and a natural-terrain cross-country track.

Continuing education offered through UW-Sheboygan provides opportunities for community members of all ages to continue their education in both credit and non-credit courses. Programs provided for adults include foreign languages, computer training, personal enrichment and opportunities for travel. High school students can take advantage of the Upward Bound college preparation program as well as credit outreach. The entire community is welcome to participate in theatre productions, wind ensemble and choir concerts, lecture and fine arts events, and a classic film series.



## University of Wisconsin-Washington County

**Address:** 400 University Drive  
West Bend, WI 53095-3699  
**Phone:** 262/335-5200  
**Website:** <http://www.washington.uwc.edu>

**Dean:** David Nixon, Ph.D  
**Board of Visitors Representative:** Ray Werhand  
**Student Government President:** Matthew Rismeyer  
**Municipal Partner(s):** Washington County and City of West Bend

### Student Profile

<b>Headcount</b>	<b>Enrollment:</b>		<b>Connections: Top 3 High Schools for New Freshmen</b>
	<b>Full-time students:</b>	<b>663 (78%)</b>	Hartford Union, West Bend East, West Bend West
	<b>Part-time students:</b>	<b>288(30%)</b>	
	<b>Students age 22+</b>	<b>231 (24%)</b>	<b>Top 3 UW System Transfer Destinations</b>
	<b>Students receiving financial aid</b>	<b>38%</b>	Milwaukee, Oshkosh, Whitewater
	<b>Non-Credit Enrollments</b>		
	<b>2004-2005</b>	<b>934</b>	

### Instructional Profile

<b>Faculty:</b>	26 FTE	<b>Instructional Academic Staff:</b>	12 FTE
	35% female		24% female
	12% minority		10 minority
	89% with terminal degrees		

<b>Local Foundational Support:</b>	\$10,500 in student scholarships; \$4,000 in campus support
<b>Collaborative Initiatives:</b>	Four baccalaureate degree completion programs with UW-Milwaukee

**UW-Washington County** is located on 87 scenic acres on the southwest side of West Bend. All buildings are connected and include a recently added science hall with state-of-the-art equipment. The success of UW-Washington County students is ensured by a talented and dedicated faculty who teach, engage in research, and share their talents through public service.

Student organizations and activities are especially vibrant and active on campus. Students can choose from campus government, a variety of academic and professional clubs, honors and service organizations, and the student newspaper. An active sports program includes both varsity and intramural sports. Students can also choose from a number of internships with local businesses. Campus-wide annual activities include a campus Earth Day, Chemistry Week, a Student Development Series with hour-long seminars, and the annual fall convocation where \$125,000 in student scholarships are distributed.

UW-Washington County students and community members combine their talents in the Moraine Chorus, Moraine Symphonic Orchestra, and campus theatrical productions. Other community-wide events include the Fine Arts Series, an annual fine arts festival, and free lecture series. An active continuing education program provides non-credit opportunities for lifelong learning. Seminars on grant-writing, credit reports, living wills, financial strategies for retirement, and resume writing are just a few of the many courses available.

## University of Wisconsin-Waukesha

**Address:** 1500 N. University Drive  
Waukesha, WI 53188-2799  
**Phone:** 262/521-5040  
**Website:** <http://www.waukesha.uwc.edu>

**Dean:** Patrick Schmitt, Ph.D.  
**Board of Visitors Representative:** Russell Launder  
**Student Government President:** Camille Ovadal  
**Municipal Partner(s):** City and County of Waukesha

### Student Profile

<b>Headcount</b>	<b>Enrollment:</b>		<b>Connections: Top 3 High Schools for New Freshmen</b>
	<b>Full-time students:</b>	1258 (61%)	Mukwonago, Arrowhead, Waukesha South
	<b>Part-time students:</b>	806 (39%)	
	<b>Students age 22+</b>	608 (29%)	<b>Top 3 UW System Transfer Destinations</b>
	<b>Students receiving financial aid</b>	33%	Milwaukee, Whitewater, Madison
	<b>Non-Credit Enrollments 2004-2005</b>	763	

### Instructional Profile

<b>Faculty:</b>	42 FTE	<b>Instructional Academic Staff:</b>	29.5 FTE
	37% female		35% female
	16% minority		2% minority
	89% with terminal degrees		

<b>Local Foundational Support:</b>	\$28,675 in student scholarships; \$6,000 in campus support
<b>Collaborative Initiatives:</b>	Three collaborative baccalaureate degree programs with UW-Milwaukee

**UW-Waukesha** is located on the east edge of Waukesha, a short drive from Milwaukee. The campus features a 92 acre field station located 10 miles to the west. Formerly a farm, this educational facility, complete with classrooms and greenhouse, is being restored to native flora and fauna. The field station is also home to a unique 450-cubic-foot wood-fired kiln modeled after the ancient Japanese Anagama kiln. It is the only one of its kind in the UW System.

With an enrollment of over 2,000 students there are a wide variety of opportunities for students to participate in co-curricular activities. Student clubs range from drama, anime, ecology, film, literary and philosophy. Other student activities include noon-time entertainment, movie/video nights, fall fest and spring fling. Students may also join with faculty members in "Immersion Excursion," venturing out into the community on service field trips. Another opportunity for faculty-student collaboration is in the area of research projects. In recent years there have been a wide variety of topics ranging from bipolar disorder to the lives of Blacks during the antebellum period. After completion, results of the research are presented at a public symposium.

The faculty and staff of UW-Waukesha are committed to helping students succeed. The campus Study Center was developed for this purpose and provides tutors in Mathematics, English and other subjects, peer mentors and group study. The Study Center is also home to the federally funded TRIO Student Support Services Program for students who are low income, first-generation college students or who have special needs.