



FACT BOOK

2006-2007

UNIVERSITY  WISCONSIN

COLLEGES

The freshman/sophomore UW campuses



THE UNIVERSITY OF WISCONSIN COLLEGES'
FACT BOOK 2006-2007
(2nd Edition)

The University of Wisconsin Colleges
Central Administrative Offices
780 Regent Street, Suite 130
Madison, Wisconsin 53715-2635

A publication of the Office of Academic Affairs
of the University of Wisconsin Colleges.

January 2007

University of Wisconsin Colleges

Introduction 1
 About the UW Colleges 2
 Contact Information 3
 Fast Facts 4
 Definitions and Data Sources 5

Student Information

Student Applications

Application Summary by Age Range..... 7
 traditional and non-traditional age student applications received in each month of the year
 Application Progression Summary..... 8
 a summary of applications, admissions and enrollments

Student Enrollments

10 Year Summary of UW Colleges Fall Semester 9
 includes headcount; fte; new freshmen
 5 Year Summaries of UW Colleges Headcount 10-14
 by status and academic level; gender and course load; race; gender and age range; high school rank and gender
 1 Year Campus Comparison 15

New Freshmen Retention

5 Year New Freshmen Retention Summaries 16-19
 by gender; race; age range; high school rank

Degrees Conferred

5 Year Summary of Associate of Arts and Science Degrees Conferred..... 20
 by gender and age range

Student Transfer

Top 25 Transfer Majors by Campus 21
 Top 25 Transfer Majors by Transfer Institution 22

Curriculum and Instruction

Course Analyses

Top 25 UW Colleges Courses by Enrollment 23
 5 Year Summary of 10th Day Enrolled Student Credit Hours

by Academic Level 24
 5 Year Summary of Average Class Size by Campus 25

Instructional Resources

Library Facts and Figures 26

Continuing Education

Continuing Education Program Summary 27
 Non-Credit Enrollments by Campus 28

Alternative Modes of Instruction

Alternative Modes of Instruction in the UW Colleges 29

Youth Options Program

3 Year Enrollment Summary 30

Faculty and Instructional Academic Staff

5 Year Summary of Instructional Personnel 31
 by type, gender, minority status and degree preparation
 Fall 2006 UW Colleges Instructional Personnel Summary 32

Finance

Budget Analyses

Budgeted Revenue by Source of Funds - All Budgets 33
 Budgeted Revenue by Source of Funds - General Academic Program Operations Budget 34
 Budget by Classification 35
 Budgeted Expenditures by Program Area 36

Municipal Support

Ownership and Insured Value of Facilities 37
 Budgeted City/County Expenditures 38

Student Cost to Attend

5 Year Tuition and Fee Summary 39

Student Financial Aid

2005-2006 Financial Aid by Campus 40
 3 Year Summary of Financial Aid Awards by Type 41

Campus Profiles

UW-Baraboo/Sauk County	42
UW-Barron County	43
UW-Fond du Lac	44
UW-Fox Valley	45
UW-Manitowoc	46
UW-Marathon County	47
UW-Marinette	48
UW-Marshfield/Wood County	49
UW-Richland	50
UW-Rock County	51
UW-Sheboygan	52
UW-Washington County	53
UW-Waukesha	54
UWC Online	55

Introduction

Welcome to the 2006-2007 *UW Colleges' Fact Book*, which is in its 2nd year of publication. The data analysis and summary information shared in this annual publication provide a comprehensive overview of the people, programs, and partnerships associated with the mission of the UW Colleges. In addition to an institutional profile, the *Fact Book* is an official source of quantitative facts and figures for internal audiences within the Colleges and the University of Wisconsin System. People outside of the institution may also benefit from this publication for such purposes as grant proposals, fundraising, legislative advocacy, special projects, and collaborative initiatives.

The content for the *UW Colleges' Fact Book* is drawn from a variety of sources. For instance, some sections of this edition, such as student enrollments, are based upon the most current figures available from the fall 2006 semester. In other instances, information is drawn from documents reflecting what occurred during the 2004-2005 academic year, since that is the most current data in these cases. Please take note of the definitions, time frames, and footnotes listed when reviewing each section and when making comparisons or drawing conclusions on your own. Electronic updates to this publication will occur as available and a complete new edition of the *Fact Book* will be published annually each fall semester.

As with any project, it takes a large team of people providing input and assistance on all phases including content, layout, and editing. We express our sincere appreciation to the following personnel and offices for their support and cooperation in developing the *Fact Book*:

- Institutional Research
- Academic Affairs
- Administrative Services
- Continuing Education
- Distance Education
- Human Resources
- Libraries
- Information Technology
- University Relations
- Registrar
- Financial Aid
- Campus Deans

We welcome your suggestions on how *The UW Colleges' Fact Book* can be improved. Any questions, comments, or concerns may be directed to Gregg Nettesheim in the Office of Academic Affairs at (608) 263-5991 or at gregg.nettesheim@uwc.edu.

Margaret Cleek, Provost and Vice Chancellor for Academic Affairs

Overview: The University of Wisconsin Colleges prepares students for success at the baccalaureate level of education by providing the first two years of a liberal arts general education. Each UWC campus offers a transfer curriculum for the baccalaureate degree, professional studies, and a general education Associate of Arts and Science degree. In addition, all campuses have Guaranteed Transfer and Collaborative Degree Programs with UW System baccalaureate degree-granting institutions. Most students live in or near the community where the UWC campus is located and commute to campus. The physical facilities of each UWC campus were constructed and are owned by local county and/or city government. UWC campuses advance the Wisconsin Idea by bringing educational and cultural resources to the people of these communities.

A Brief History: The roots of the UW Colleges (UWC) lie in the establishment of off-campus classes and the beginning of extension services in 1907. Early UWC campuses were part of the University of Wisconsin-Madison. Three other UWC campuses were added by institutions of the former Wisconsin State University System. In 1946, the UW Regents developed a policy for local communities to provide buildings for exclusive use by the UW Colleges. With the merger in 1972 of the University of Wisconsin and the State University of Wisconsin to create the University of Wisconsin System, UWC campuses were reunited under the name University of Wisconsin Center System. In 1983 the name of the institution became the University of Wisconsin Centers. The institution's name was changed to the University of Wisconsin Colleges in 1997. Beginning in 1999, collaborative Bachelor's degree programs in areas like business, engineering, nursing, information technology and general studies were negotiated with UW System baccalaureate degree granting campuses. Articulation agreements with many different public and private colleges and universities permit students to complete other specialized programs on UW Colleges campuses. The UW Colleges began offering an on-line Associate of Arts and Science degree in 2001.

Mission: The University of Wisconsin Colleges is a multi-campus institution that prepares students for success at the baccalaureate level of education, provides the first two years of a liberal arts, general education that is accessible and affordable, and advances the Wisconsin Idea by bringing the resources of the University to the people of the state and the communities that provide and support its campuses.

Vision: By 2012 the University of Wisconsin Colleges will be recognized for pre-eminence in liberal arts general education.

A Part of the University of Wisconsin System: The UW Colleges is one of 15 institutions within the UW System. The System also includes 11 comprehensive universities granting bachelors and masters degrees; two doctoral universities granting bachelors, masters, and doctoral degrees, and UW-Extension. The UW Colleges is currently undergoing an integration with UW-Extension.

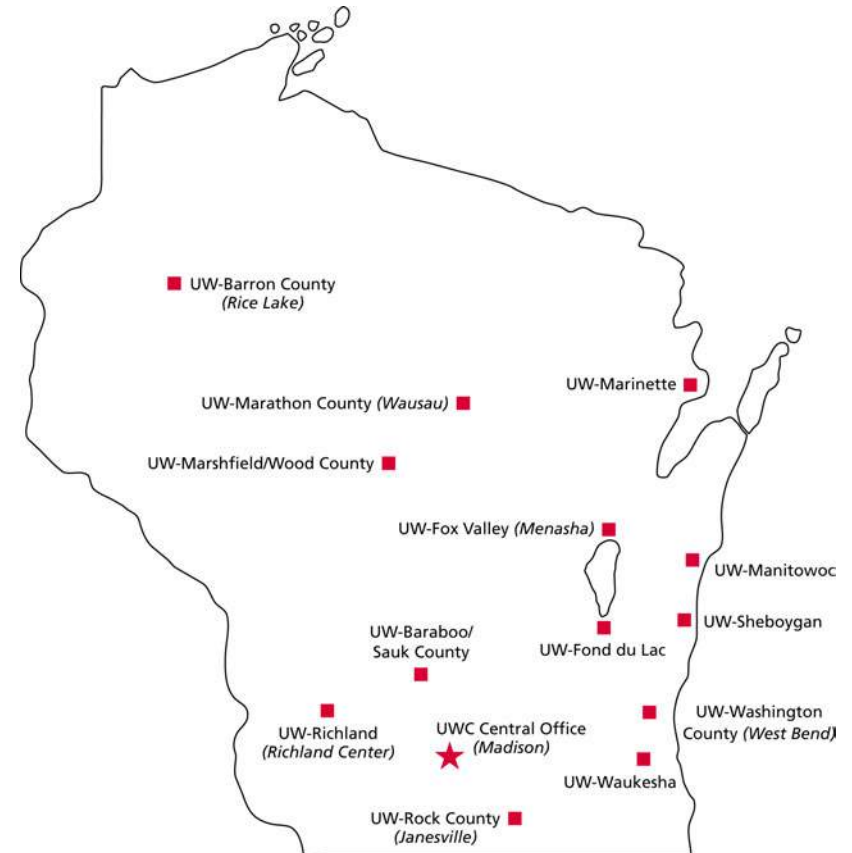
Accreditation: The University of Wisconsin Colleges is accredited by The Higher Learning Commission and is a member of the North Central Association of Colleges and Universities located at: 30 North LaSalle St. Suite 2400 Chicago, IL 60602-2504; phone 800/621-7440; <http://www.ncahigherlearningcommission.org/>.

Liberal Arts General Education: The University of Wisconsin Colleges excels in providing its students with a liberal arts general education, the foundation of the Bachelor's degree. This includes a steadfast commitment to instruction in the natural sciences and mathematics, the social sciences, and the arts and humanities. It also involves an equally strong commitment to preparing students for lifelong learning, leadership, service and responsible citizenship.

Degrees and Certificates: The UW Colleges are accredited to offer the Associate of Arts and Science Degree as well as Certificates for Business, Environmental Studies, International Studies and Women's Studies.

Central Administrative Office Contact Information

Address	780 Regent St. Suite 130 Madison, WI 53715-2635	
Chancellor	David Wilson	(608)263-1783
Provost & Vice Chancellor for Academic Affairs	Margaret Cleek	(608)263-1794
Associate Vice Chancellor for Academic Affairs	Gregory P. Lampe	(608)263-7217
Vice Chancellor for Administrative Services	Steven Wildeck	(608)264-3040
Assistant Vice Chancellor for Information Technology	Dick Cleek	(608)265-5764
Special Assistant to the Chancellor for Marketing and University Relations	Teri Venker	(608)263-5061
Interim Chief Student Affairs Officer	Patti Wise	(608)263-0476
Interim Registrar	Joey Whitcomb	(608)262-9652
Director, Student Financial Aid	Marilyn Krump	(608)263-7727
Director, Continuing Education	Tim Urbonya	(608)263-9676
Director, Distance Education	Barbara Stinson	(608)265-0659
Interim Director, Human Resources	Brad Krause	(608)890-1066
Director, Budget	Colleen Godfriaux	(608)265-9807
Director, Business Services	Laurie Grigg	(608)263-3191
Grants	Eric Smith	(608)265-6781
Institutional Research	Gregg Nettessheim	(608)263-5991



Fast Facts

Fall 2006 Student Enrollment:

Headcount (unduplicated):	12,272
Full Time Equivalent:	8,589
New freshmen (unduplicated):	4,087

Note: See page 5 – Student Enrollment Definitions – changes for 2006-2007

Fall 2006 Credit Enrollment:

Freshmen	88,998	credits	69% of total
Sophomores	32,099	credits	25% of total
Special Students	7,741	credits	6% of total
Total Enrolled Credits	128,838	credits	100%

Degrees and certificates awarded in 2005-2006:	1268	Associate of Arts and Science Degrees
	9	Certificates

Financial Information:

2005-2006 Budget:	\$84,079,630
Fall 2006 Tuition and Average Segregated Fees:	\$2,259

Definitions and Data Sources

Student Enrollment Definitions:

Changes for 2006-2007 – Beginning this year the student counts found in the *Fact Book* are unduplicated counts based upon the rules developed by the Enrollment Targets and Resource Reallocation working group and implemented by campuses in the fall of 2006. This means that each student attending one or more campuses in the UW Colleges, and or attending UW Colleges Online will be counted only once. This differs from the counting methodology followed by UW System Administration and used in the Registrar's Blue Book Enrollment Reports, which count each campus enrollment as one student. Under that methodology students enrolled at two or more campuses, and or enrolled at a campus and in UW Colleges Online are counted more than once. Students who have completely withdrawn from enrollment as of the 1st day of classes, regardless of when that withdrawal was processed, are excluded from these counts.

Prior year enrollment counts and retention calculations have been adjusted to conform to this methodology. While these numbers cannot be considered the "official counts" because they do not match the methodology used by UW System Administration, we believe that this method gives an accurate picture of overall UW Colleges' enrollments.

- **Headcount:** For most pages this is an unduplicated count of the students enrolled anywhere within the UW Colleges. The only exception can be found on page 15 where students are counted once for each campus and/or online program enrollment.
- **Full-time equivalent (FTE) - Students:** FTE is the sum of all regular credits divided by 15, plus the sum of all audit credits divided by 30. When calculating FTE, developmental English, Mathematics, and Learning Resources credits are not included.
- **Freshman:** A student enrolled in a program leading to completion of an Associate of Arts and Science degree, with fewer than 30 completed degree credits.
- **New freshman:** A freshman student who has never previously attended an institution of higher education.
- **Sophomore:** A student enrolled in a program leading to completion of an Associate of Arts and Science degree with 30 or more completed degree credits.
- **Special Student:** A student enrolled in courses, but not in a program leading to completion of an Associate of Arts and Science degree.
- **Transfer Student:** A student who has previously attended another institution for whom some or all of the previously completed credits are accepted by the UW Colleges.
- **Readmit Student:** A student who previously attended the UW Colleges, stopped attending for one or more academic terms (not summer), and who has applied for admission and been granted permission to re-enroll in classes for a given term.
- **Non-traditional age student:** A student 22 years old or older as of the first day of the fall term for the term being reported.
- **Full-time student:** A student enrolled for 12 or more credits in the term reported. Audit credits are not included in the computation of full-time or part-time status.
- **Part-time student:** A student enrolled for fewer than 12 credits in the term reported.
- **High School Quartile:** The percentile high school rank of an entering new freshman, placed into one of four quarters. For example, a student who is ranked 24th in a class of 100 is in the 1st or top quartile. A student ranked 51st in a class of 100 is in the 3rd quartile.

Faculty/Instructional Academic Staff Definitions

- **Full-time equivalent (FTE) – Faculty:** An FTE faculty member is one who is teaching a full load as defined by academic departments. These vary but are generally defined as at least 24 class contact hours per academic year. Service on campus and university committees is required.
- **Full-time equivalent (FTE) – Instructional Academic Staff (IAS):** FTE for IAS is based on the average number of contact hours being taught by faculty in the academic department. Just as with faculty these vary by department. Service on campus and university committees is optional.

University Definitions

- The University of Wisconsin System consists of two doctoral granting institutions located in Madison and Milwaukee; thirteen comprehensive institutions including UW-Eau Claire, Green Bay, La Crosse, Oshkosh, Parkside, Platteville, River Falls, Stevens Point, Stout, Superior, Whitewater; the UW Colleges and the University of Wisconsin-Extension.

Data Sources:

Student Administration System (SAS) Datamart; Registrar's 10th Day Enrollment Reports; Institutional Research Reporting; Office of Human Resources/Affirmative Action; Office of Administrative Services; Financial Aid Office; UW System Joint Administrative Committee on Academic Programs (JACAP); UW System Office of Policy Analysis and Research (OPAR).

About the Fact Book:

The *UW Colleges Fact Book* is based upon the premise that reported data for each section is the most accurate and current available at the time of publication. The *Fact Book* does not constitute a contract between the institution and its students, employees, and communities. When making comparisons, it is important to note that sources external to the institution sometimes use different definitions and data parameters in compiling their reports. The sole purpose of this publication is to provide an informational summary of institutional facts and statistics about the University of Wisconsin Colleges.

The University of Wisconsin Colleges is committed to a program of equal opportunity for all faculty, academic staff, classified staff, and students, and will actively carry out all federal and state regulations and executive orders. No person may be denied employment or related benefits or admission to the university or to any of its programs or activities, either academic or nonacademic, curricular or extracurricular, because of race, color, creed, religion, sex, marital status, age, disability, veteran's status, national origin, sexual orientation, relationship to other employees, arrest or conviction records, political affiliation, religious practice, or memberships in the national guard, state defense force or any other active or reserve component of the military forces of the United States or the State of Wisconsin.

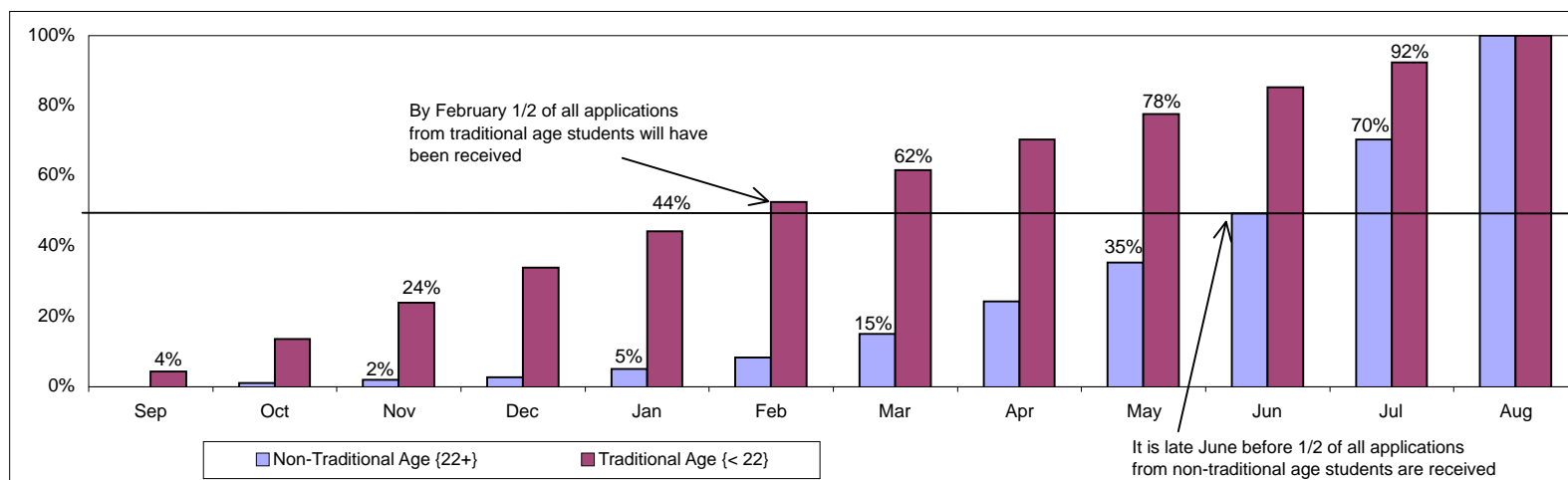
Student Information
Student Applications

Cumulative Summary of Applications Received by Month for Traditional and Non-Traditional Age Students

Term	Age Range	Sep	Oct	Nov	Dec	Jan	Feb	Mar	Apr	May	Jun	Jul	Aug
Fall 2004		2003				2004							
	< 22	369	1188	1935	2811	3595	4326	5068	5776	6357	6849	7358	7920
		5%	15%	24%	35%	45%	55%	64%	73%	80%	86%	93%	100%
	22+	10	26	48	72	131	229	390	638	929	1274	1786	2452
		0%	1%	2%	3%	5%	9%	16%	26%	38%	52%	73%	100%
Fall 2005		2004				2005							
	< 22	306	950	1841	2583	3316	3891	4569	5193	5856	6482	6991	7567
		4%	13%	24%	34%	44%	51%	60%	69%	77%	86%	92%	100%
	22+	6	20	42	72	126	204	354	620	902	1233	1773	2564
		0%	1%	2%	3%	5%	8%	14%	24%	35%	48%	69%	100%
Fall 2006		2005				2006							
	< 22	308	965	1812	2538	3331	3919	4598	5197	5789	6367	6988	7582
		4%	13%	24%	33%	44%	52%	61%	69%	76%	84%	92%	100%
	22+	13	24	45	62	121	204	389	614	881	1276	1830	2649
		0%	1%	2%	2%	5%	8%	15%	23%	33%	48%	69%	100%

note: excludes applications received in the month the term begins

Three Year Composite Application Trend

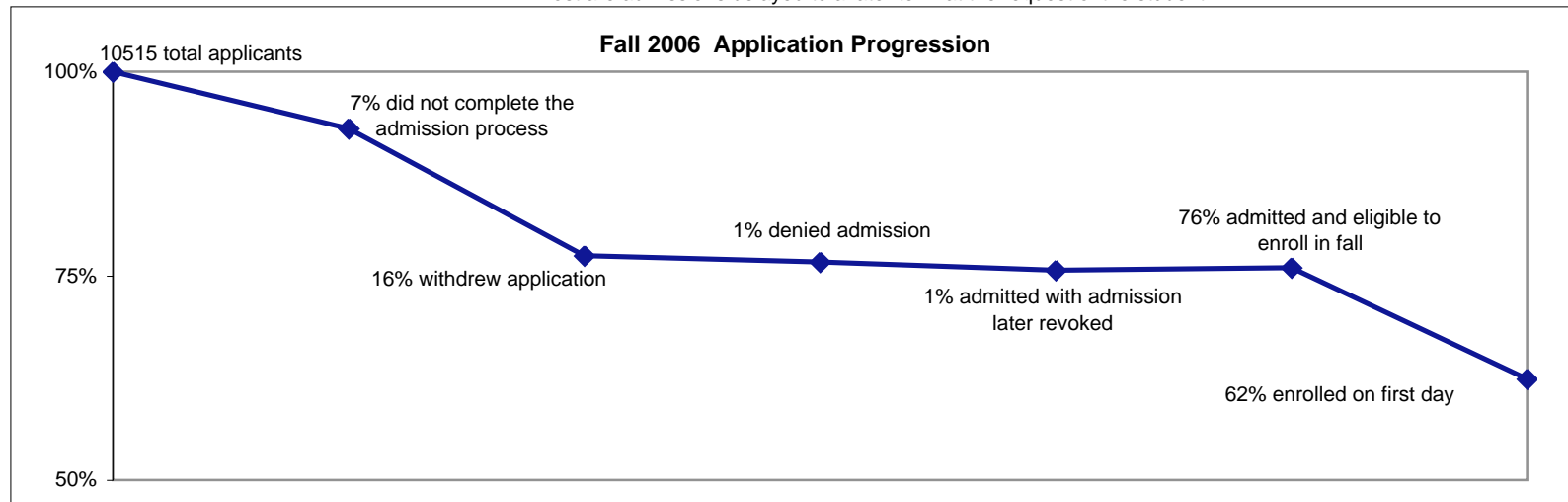


Student Information
Student Applications

Application, Admission and Enrollment Progression

Application and Admission Status	Fall 2002		Fall 2003		Fall 2004		Fall 2005		Fall 2006	
	Count	%	Count	%	Count	%	Count	%	Count	%
Total Applicants	9705		10932		10588		10431		10515	
Applied but did not complete the admission process	524	5%	1056	10%	965	9%	859	8%	733	7%
Withdrawn application	720	7%	1076	10%	1043	10%	1245	12%	1639	16%
Denied admission	145	1%	274	3%	177	2%	112	1%	79	1%
Admitted with admission later revoked*	0	0%	123	1%	86	1%	79	1%	104	1%
Admitted and eligible to enroll	8316	86%	8403	77%	8317	79%	8136	78%	7960	76%
First Day Enrollments	6792		6448		6334		6343		6562	
From total applicants		70%		59%		60%		61%		62%
From admitted and eligible applicants		82%		77%		76%		78%		82%

*most are admissions delayed to a later term at the request of the student

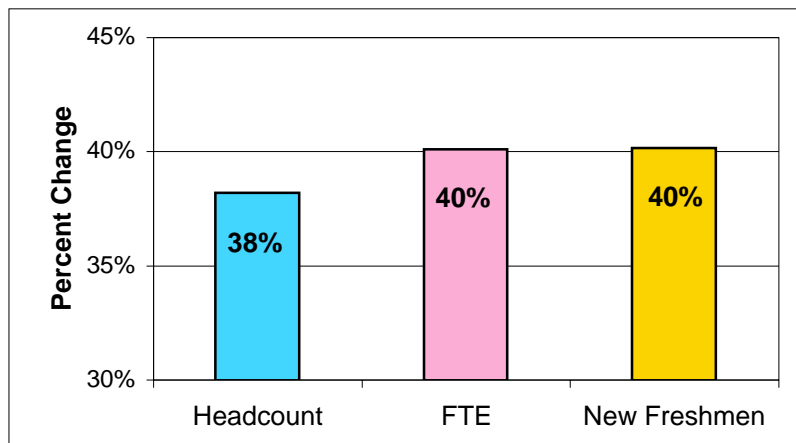


Student Information
Student Enrollments

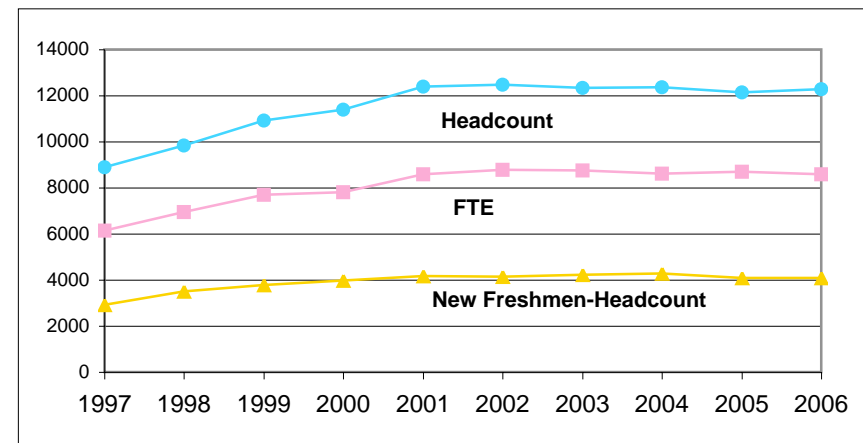
10 Year Summary of UW Colleges Fall Semester Enrollments

	1997	1998	1999	2000	2001	2002	2003	2004	2005	2006
Headcount	8881	9843	10910	11382	12387	12474	12339	12352	12131	12272
Full-Time Equivalent (FTE)	6131	6935	7701	7793	8586	8782	8756	8617	8692	8589
New Freshmen	2916	3503	3764	3964	4154	4140	4215	4278	4091	4087

Cumulative Increase in Enrollment
Fall 1997 - Fall 2006



Changes in Enrollments
Fall 1997 - Fall 2006



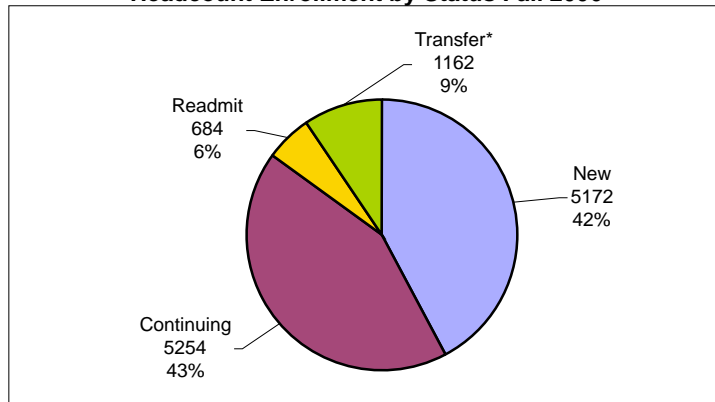
*FTE enrollment is computed by adding the sum of all regular credits divided by 15, to the sum of all audit credits divided by 30.

Student Information
Student Enrollments

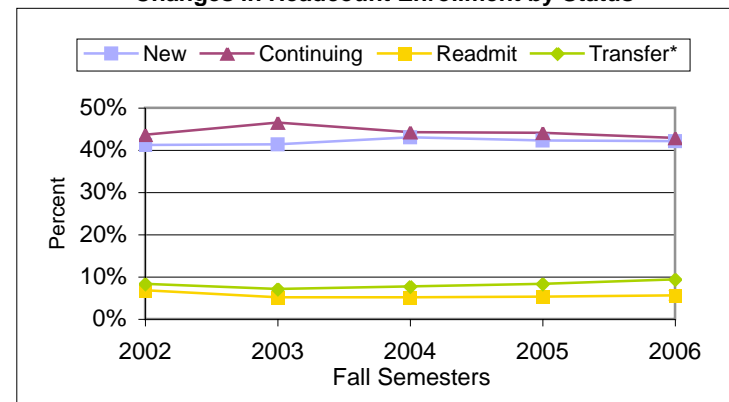
5 Year Summary of UW Colleges Fall Term Headcount Enrollments by Status and Level

Status	Level	2002	2003	2004	2005	2006
New	Freshmen	4140	4215	4278	4091	4087
	Sophomore	22	15	18	18	19
	Special	978	869	1012	1016	1066
Continuing	Freshmen	2621	2824	2765	2660	2543
	Sophomore	2552	2556	2390	2383	2405
	Special	262	360	303	299	306
Readmit	Freshmen	388	332	299	342	363
	Sophomore	271	174	194	202	201
	Special	197	121	147	105	120
Transfer*	Freshmen	713	579	603	612	711
	Sophomore	328	224	242	274	280
	Special	2	70	101	129	171
Total		12474	12339	12352	12131	12272
Percent of Total:	New	41%	41%	43%	42%	42%
	Continuing	44%	47%	44%	44%	43%
	Readmit	7%	5%	5%	5%	6%
	Transfer*	8%	7%	8%	8%	9%

Headcount Enrollment by Status Fall 2006



Changes in Headcount Enrollment by Status



*in these charts "transfer" denotes students who have transferred into the UW Colleges

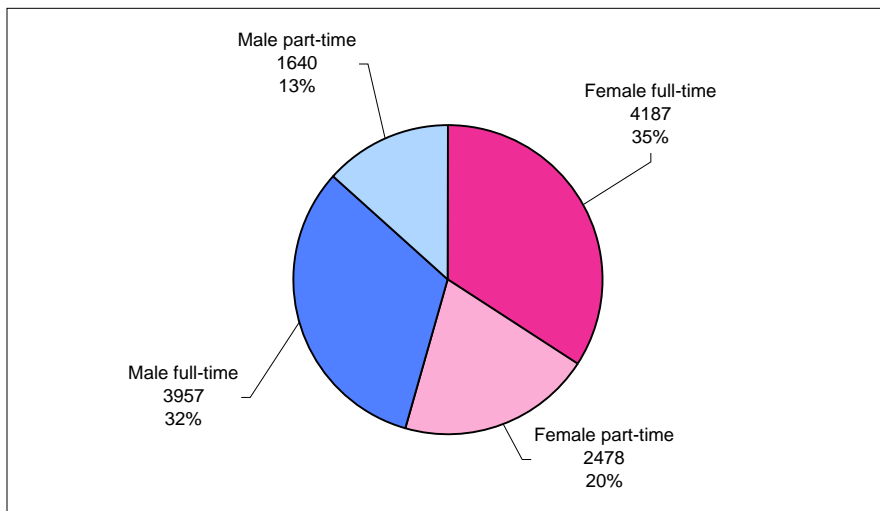
Student Information
Student Enrollments

5 Year Summary of UW Colleges Fall Term Headcount Enrollments by Gender and Course Load

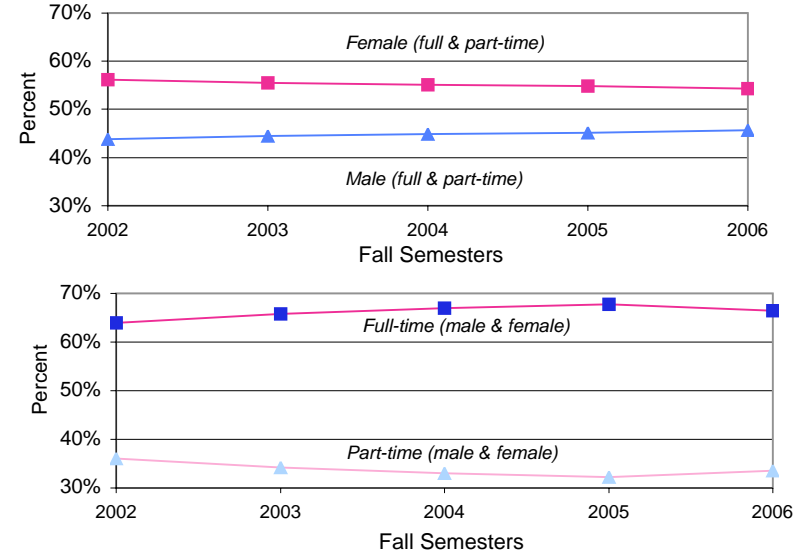
Gender and Course Load		2002	2003	2004	2005	2006
Headcount:	Female full-time	4250	4260	4318	4294	4187
	Female part-time	2754	2577	2484	2351	2478
	Male full-time	3726	3858	3945	3924	3957
	Male part-time	1736	1634	1602	1549	1640
	Total	12466	12329	12349	12118	12262
Percent of Total:	Female	56%	55%	55%	55%	54%
	Male	44%	45%	45%	45%	46%
	Full-time	64%	66%	67%	68%	66%
	Part-time	36%	34%	33%	32%	34%

Excludes students with invalid or missing gender codes

Headcount Enrollment by Gender and Course Load Fall 2006



Changes in Headcount Enrollment by Gender and Course Load

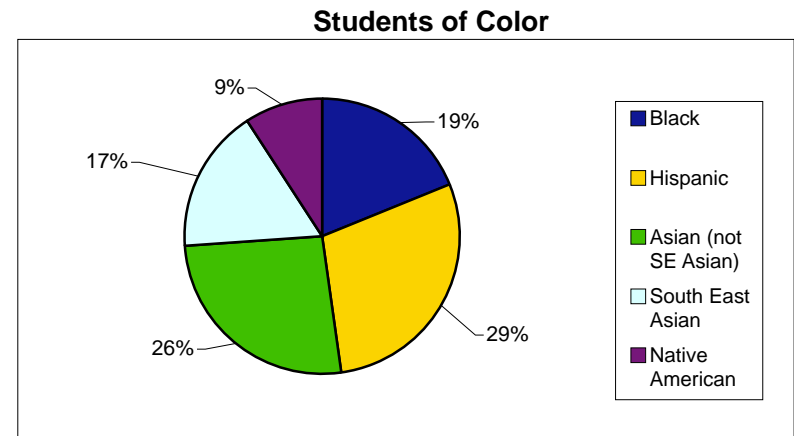
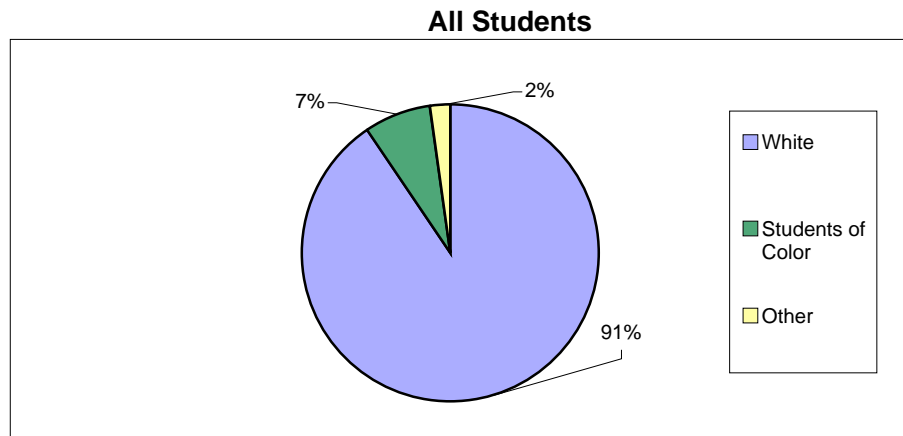


Student Information
Student Enrollments

5 Year Summary of UW Colleges Headcount Enrollments by Race

	Race	2002	2003	2004	2005	2006
All Students	White	11517	11420	11443	11105	11109
	Students of Color	910	867	813	862	894
	Other	49	52	96	164	269
	Total	12476	12339	12352	12131	12272
<i>"Other" includes non-immigrant aliens, and students of unknown race</i>						
Students of Color	Black	189	172	141	151	169
	Hispanic	242	239	230	251	258
	Asian (not SE Asian)	158	166	192	212	234
	South East Asian	231	208	168	152	152
	Native American	90	82	82	96	81
Percent of Total:	White	92%	93%	93%	92%	91%
	Students of Color	7%	7%	7%	7%	7%
Percent Change from Prior Year:	White	0.2%	-0.8%	0.2%	-3.0%	0.0%
	Students of Color	7.7%	-4.7%	-6.2%	6.0%	3.7%

Headcount Enrollment Fall 2006



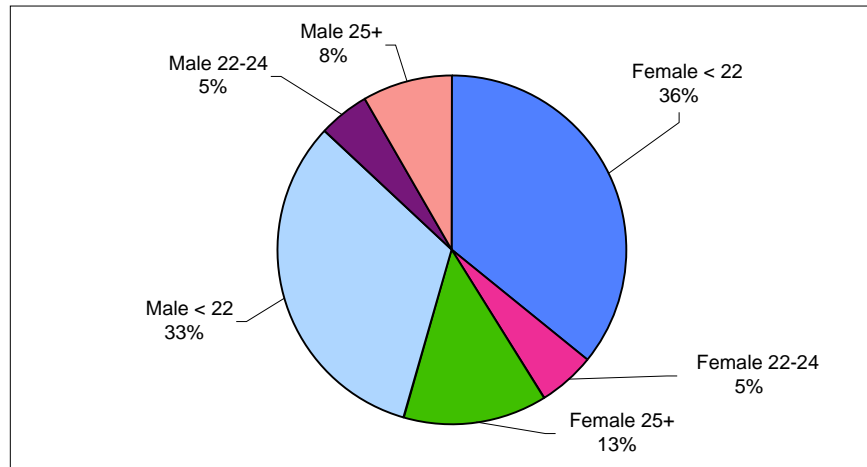
Student Information
Student Enrollments

5 Year Summary of UW Colleges Fall Semester Headcount Enrollments by Gender and Age Range

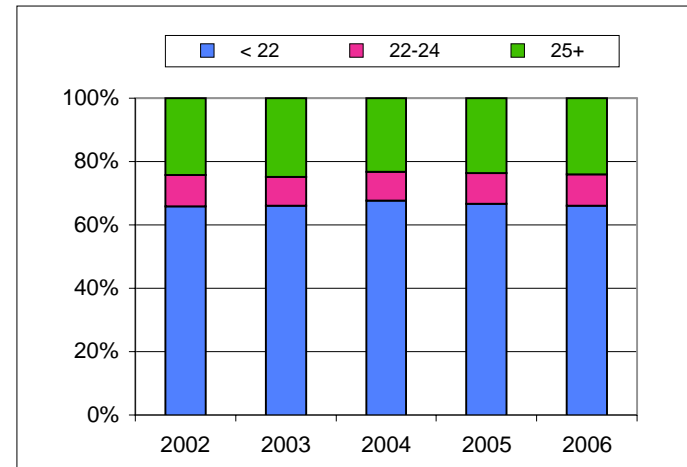
		Age Range	2002	2003	2004	2005	2006
Headcount: Female		< 22 years of age	4613	4515	4601	4432	4398
		22-24	693	622	621	642	659
		25+	1698	1700	1580	1571	1608
Male		< 22 years of age	3853	3997	4068	3985	3987
		22-24	610	590	605	590	591
		25+	999	905	874	898	1019
		Total*	12466	12329	12349	12118	12262
Percent of Total:		< 22	68%	69%	70%	69%	68%
		22-24	10%	10%	10%	10%	10%
		25+	22%	21%	20%	20%	21%

Totals exclude students with invalid birthdates and/or invalid or missing gender codes

Headcount Enrollment by Gender and Age Range Fall 2006



Changes in Headcount Enrollment by Age Range



Student Information

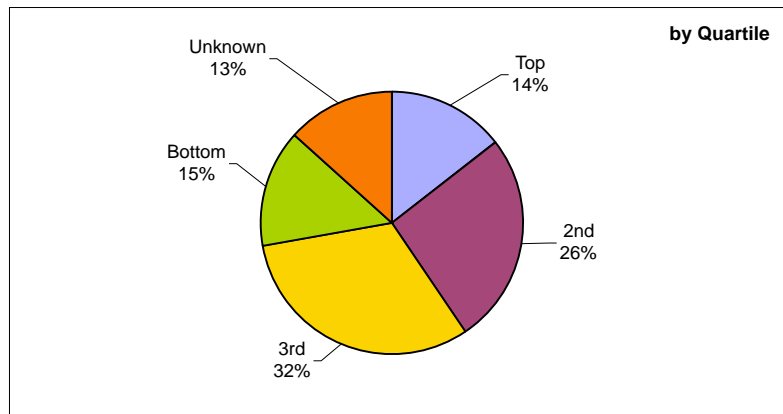
Student Enrollments

**5 Year Summary of UW Colleges Headcount Enrollments by High School Rank and Gender
New Freshmen Only**

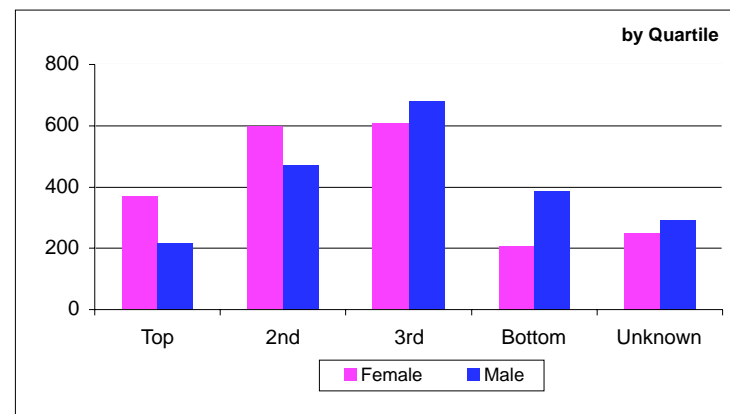
Quartile	Gender	2002	2003	2004	2005	2006
Top	Female	386	370	385	368	370
	Male	170	171	198	168	218
2nd	Female	653	595	660	611	598
	Male	438	506	454	483	473
3rd	Female	696	724	705	616	607
	Male	722	775	747	660	681
Bottom	Female	226	184	195	221	207
	Male	361	312	320	346	387
Unknown	Female	237	291	312	284	250
	Male	249	286	301	332	293
Total		4138	4214	4277	4089	4084
Percent of Total:	Top	13%	13%	14%	13%	14%
	2nd	26%	26%	26%	27%	26%
	3rd	34%	36%	34%	31%	32%
	Bottom	14%	12%	12%	14%	15%
	No Rank	12%	14%	14%	15%	13%

note: excludes students with missing or invalid gender codes

New Freshmen By High School Rank Fall 2006



New Freshmen by High School Rank and Gender Fall 2006



Student Information

Student Enrollments

Fall 2006 Enrollment Comparison

	Headcount	FTE	New Freshmen	Females	Non-Traditional Students*	Students of Color	Full-Time Students**	1st or 2nd HS Quartile***
Baraboo/Sauk County Campus	553	420	209	56%	26%	4%	64%	54%
Baraboo/Sauk County FCI Oxford	67	23	10	0%	100%	51%	0%	0%
Barron County	591	373	181	56%	20%	3%	47%	38%
Fond du Lac	767	562	247	54%	27%	5%	62%	40%
Fox Valley	1731	1196	577	53%	32%	6%	55%	41%
Manitowoc	588	449	217	53%	28%	7%	67%	46%
Marathon County	1320	948	473	53%	27%	10%	61%	48%
Marinette	460	314	154	55%	28%	2%	56%	46%
Marshfield/Wood County	594	422	213	59%	31%	3%	58%	53%
Richland	450	332	204	60%	22%	3%	58%	35%
Rock County	930	629	278	57%	39%	10%	53%	50%
Sheboygan	690	478	246	50%	33%	12%	57%	48%
Washington County	967	725	358	54%	25%	4%	66%	42%
Waukesha	2020	1418	671	49%	28%	10%	58%	26%
Online	973	300	83	75%	71%	5%	29%	37%

notes:

* Students age 22 or older

** Enrolled for 12 or more credits

*** Graduated from high school in the top 50% of graduating class; includes new freshmen only

Student Information

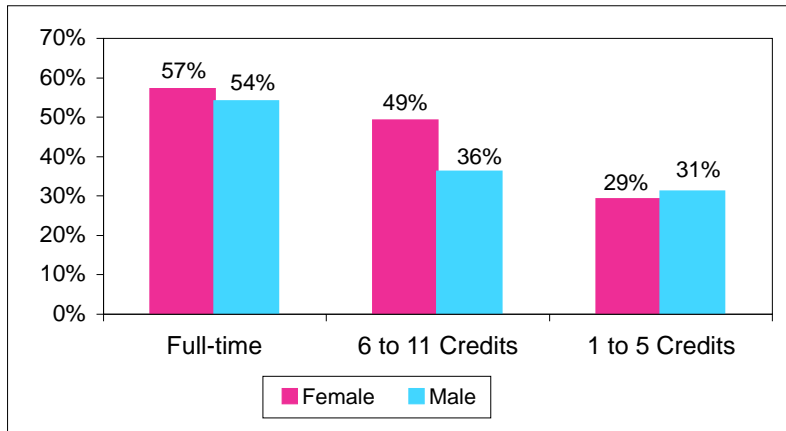
New Freshmen Retention

5 Year New Freshmen Retention Summary by Gender

Entering Fall Term	Female	Male	All
<i>Retention Rate After 1 Year (fall to fall)</i>			
2001	56%	52%	54%
2002	56%	51%	54%
2003	53%	51%	52%
2004	52%	51%	51%
2005	55%	50%	53%

note: includes both full-time and part-time students

Average 1 Year Retention Rates for Fall Term New Freshmen by Gender and Credit Load 2001 - 2005

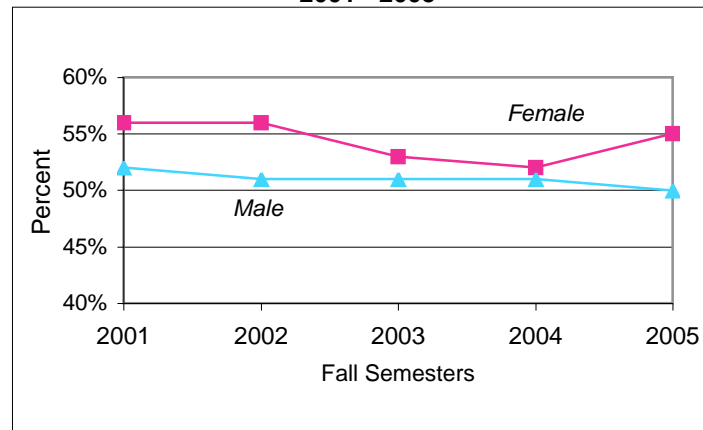


Average Fall Term Cohort Sizes:

Female Full-time (1870); 6 to 11 (210); 1 to 5 (58)

Male Full-time (1737); 6 to 11 (158); 1 to 5 (39)

Changes in New Freshmen Retention by Gender 2001 - 2005



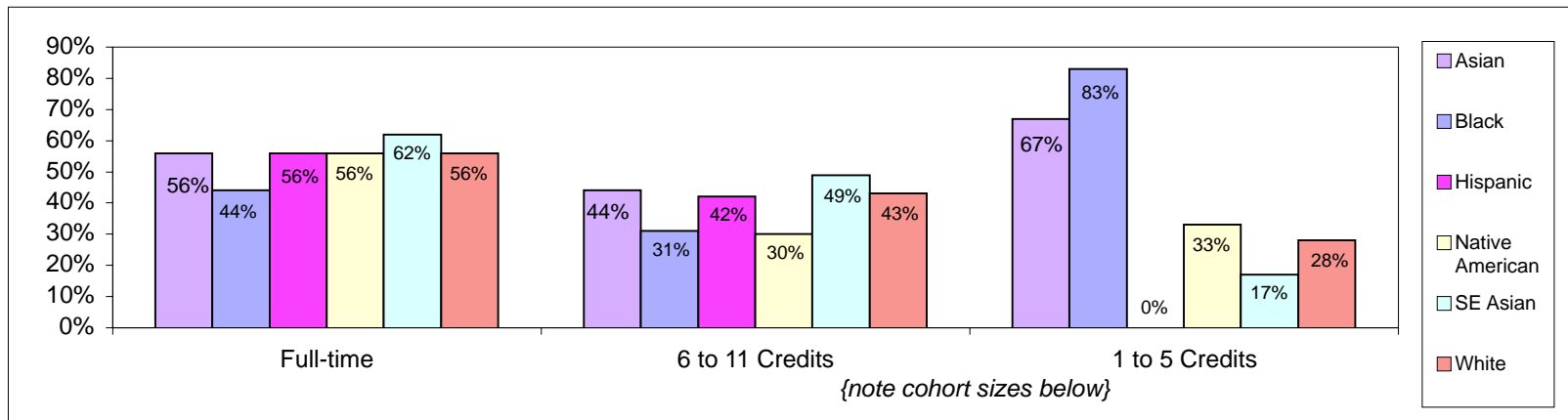
Student Information
New Freshmen Retention

5 Year New Freshmen Retention Summary by Race

Entering Fall Term	Asian	Black	Hispanic	Native American	SE Asian	White	All
<i>Retention Rate After 1 Year (fall to fall)</i>							
2001	70%	49%	58%	52%	62%	54%	54%
2002	48%	50%	50%	44%	59%	54%	54%
2003	47%	32%	47%	40%	51%	53%	52%
2004	51%	28%	53%	50%	58%	52%	51%
2005	51%	40%	46%	42%	66%	53%	53%

note: includes both full-time and part-time students

Average 1 Year Retention Rates for Fall Term New Freshmen by Race
2001 - 2005



Average Fall Term Cohort Sizes:

Asian	Full-time (54); 6 to 11 (7); 1 to 5 (2)	Native American	Full-time (19); 6 to 11 (3); 1 to 5 (1)
Black	Full-time (29); 6 to 11 (8); 1 to 5 (1)	SE Asian	Full-time (58); 6 to 11 (8); 1 to 5 (1)
Hispanic	Full-time (58); 6 to 11 (11); 1 to 5 (2)	White	Full-time (3370); 6 to 11 (329); 1 to 5 (89)

Student Information

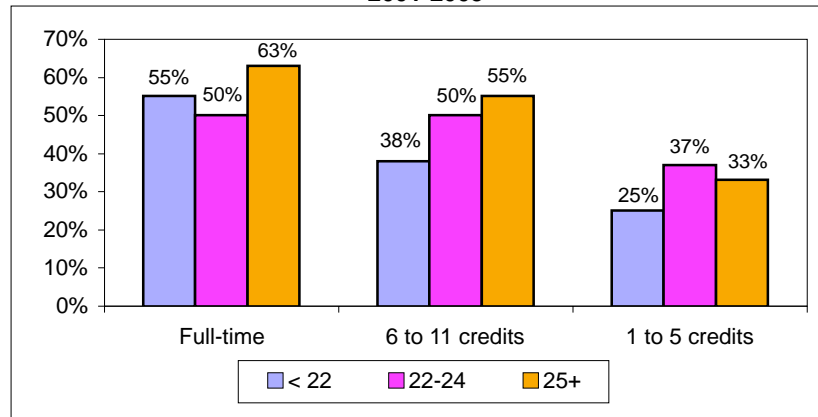
New Freshmen Retention

5 Year New Freshmen Retention Summary by Age Range

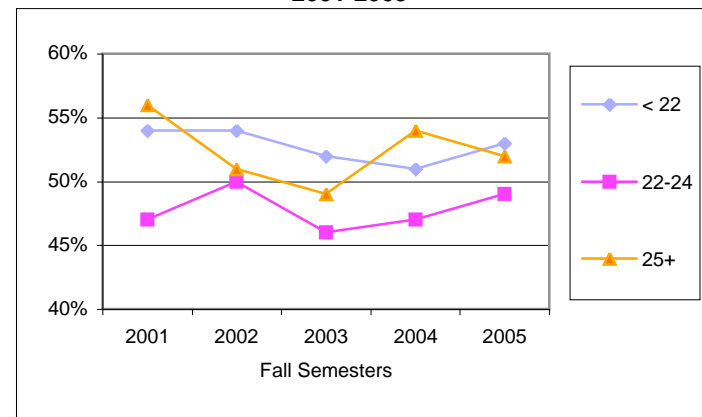
Entering Fall Term	Age Range			All
	< 22	22 - 24	25 +	
	<i>Retention Rate After 1 Year (fall to fall)</i>			
2001	54%	47%	56%	54%
2002	54%	50%	51%	54%
2003	52%	46%	49%	52%
2004	51%	47%	54%	51%
2005	53%	49%	52%	53%

note: includes both full-time and part-time students

Average 1 Year Retention Rates for Fall Term New Freshmen by Age Range and Credit Load 2001-2005



Changes in New Freshmen Retention by Age Range 2001-2005



Average Fall Term Cohort Sizes

< 22 Full-time (3419); 6 to 11 (245); 1 to 5 (50)
 22-24 Full-time (93); 6 to 11 (40); 1 to 5 (11)
 25+ Full-time (96); 6 to 11 (83); 1 to 5 (37)

Student Information
New Freshmen Retention

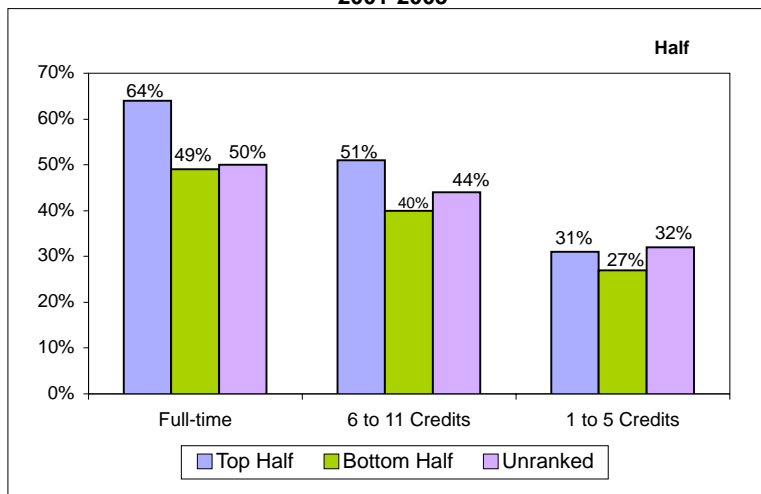
5 Year New Freshmen Retention Summary by High School Rank

High School Quartile

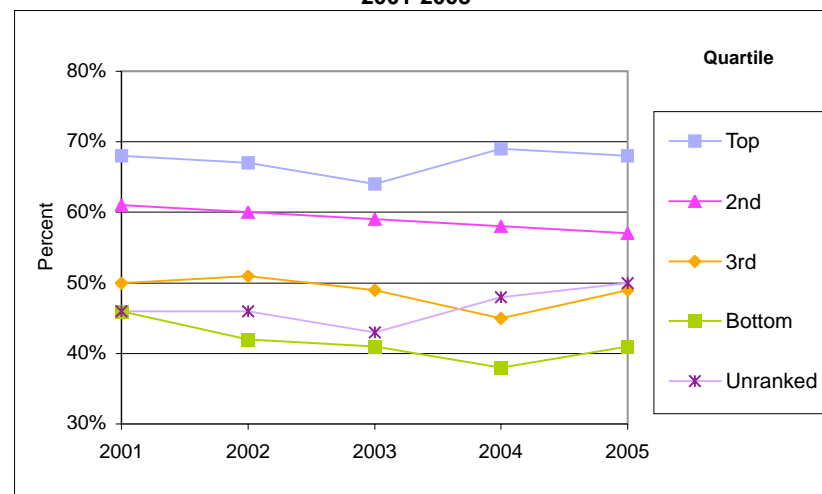
Entering Fall Term	Top	2nd	3rd	Bottom	Unranked	All
<i>Retention Rate After 1 Year (fall to fall)</i>						
2001	68%	61%	50%	46%	46%	54%
2002	67%	60%	51%	42%	46%	54%
2003	64%	59%	49%	41%	43%	52%
2004	69%	58%	45%	38%	48%	51%
2005	68%	57%	49%	41%	50%	53%

note: includes both full-time and part-time students

Average 1 Year Retention Rates for Fall Term New Freshmen by High School Rank and Credit Load 2001-2005



Changes in New Freshmen Retention by High School Rank 2001-2005



Average Fall Term Cohort Sizes:

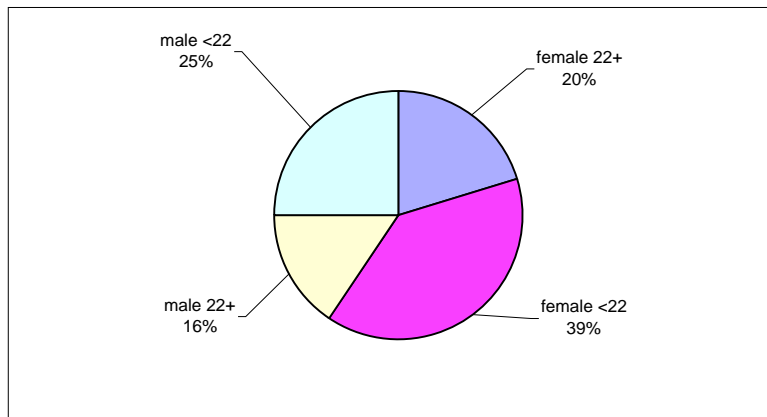
Top Half Full-time (1508); 6 to 11 (80); 1 to 5 (24)
 Bottom Half Full-time (1692); 6 to 11 (185); 1 to 5 (38)
 Unranked Full-time (408); 6 to 11 (103); 1 to 5 (35)

Student Information
Degrees Conferred

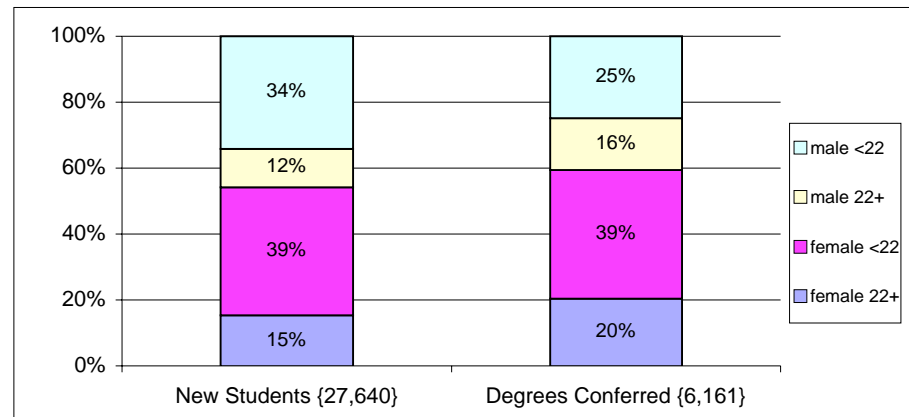
5 Year Summary of Associate of Arts and Science Degrees Conferred

		2001-2002	2002-2003	2003-2004	2004-2005	2005-2006
Total Degrees Conferred		1111	1222	1338	1222	1268
Females	Non-Traditional Age (22+)	20%	21%	20%	21%	20%
	Traditional Age (<22)	41%	40%	39%	38%	38%
Males	Non-Traditional Age (22+)	16%	15%	16%	16%	15%
	Traditional Age (<22)	23%	24%	25%	25%	27%

Degrees Conferred by Gender and Age Range
5 Year Aggregate Summary



Comparing New Student Enrollments to Degrees Conferred
Enrollments from Fall 1999 - Spring 2003
Degrees from Fall 2001 - Spring 2005



note: New Students includes degree seeking new freshmen, transfers, re-entries and re-entry transfers

Student Information
Student Transfer

Major or Major Area*	Top 25 Baccalaureate Majors by Campus														UWC
	Baraboo	Barron	Fond du Lac	Fox Valley	Manitowoc	Marathon	Marinette	Marshfield	Richland	Rock	Sheboygan	Washington	Waukesha	Online	
BUSINESS	71	126	148	301	148	241	57	111	65	118	148	177	557	54	2322
EDUCATION	47	90	77	148	51	146	52	97	52	72	68	95	177	37	1209
HEALTH SCIENCES	22	45	70	109	51	82	20	110	21	41	46	56	345	68	1086
COMMUNICATION & THEATRE ARTS	27	29	44	130	50	83	36	46	24	66	55	75	249	22	936
SOCIOLOGY	21	30	67	128	49	103	28	50	20	51	52	56	117	22	794
BIOLOGY	21	61	36	98	49	99	38	42	19	40	38	39	107	8	695
PSYCHOLOGY	27	32	35	88	39	73	14	47	29	23	43	33	105	18	606
ENGINEERING	14	26	42	77	32	78	13	36	14	23	44	26	110	5	540
POLITICAL SCIENCE	27	19	31	64	35	46	11	29	24	29	34	36	110	12	507
COMPUTER SCIENCE	9	22	24	60	29	50	13	31	11	22	24	27	110	5	437
ART	13	21	28	46	18	42	8	20	13	29	25	28	48	9	348
ENGLISH	18	15	15	50	23	42	5	21	15	28	12	30	57	9	340
PHYSICAL EDUCATION & ATHLETICS	18	13	14	29	15	42	8	27	27	11	19	17	52	2	294
HISTORY	13	14	13	39	20	24	12	12	7	16	24	25	37	5	261
NATURAL RESOURCES	13	10	14	23	24	37	9	14	21	11	16	19	39	2	252
SPECIALIZED VOCATIONAL MAJOR	9	19	9	22	10	13		12	2	16	4	7	43	1	167
OTHER	2	2	20	39		20	4	8		10	7	6	21	15	154
AGRICULTURE AND LIFE SCIENCES	8	13	10	13	6	15	3	13	7	9	15	11	22	5	150
ECONOMICS	4	4	11	21	16	10	6	5	3	6	6	10	32	5	139
GEOGRAPHY	3	9	9	16	16	4	3	6	5	7	11	14	28	2	133
MATHEMATICS	7	7	7	16	11	16	6	17	7	8	1	8	14	2	127
INTERDISCIPLINARY STUDIES	2		2	4	4		4			11	22	28	23	17	117
ZOOLOGY	5	6	7	7	5	13	4	10	11	10	6	3	12	2	101
CHEMISTRY	2	4	1	12	5	16	5	5	4	6	6	7	26	1	100
SPANISH	6	6	2	17	4	13		4	1	9	10	8	18	1	99

*at time of graduation

note: includes new freshmen from fall 1995 - summer 2002 graduating from another UW prior to fall 2006
students enrolled at 2 or more campuses are counted once at each campus

Student Information

Student Transfer

Major or Major Area*	Top 25 Baccalaureate Majors by Transfer Institution													
	Eau Claire	Green Bay	La Crosse	Madison	Milwaukee	Oshkosh	Parkside	Platteville	River Falls	Stevens Point	Stout	Superior	Whitewater	UWC
BUSINESS	159	161	175	308	429	311	9	74	42	147	99	6	314	2234
EDUCATION	61	60	60	57	160	168	0	51	40	227	119	11	143	1157
HEALTH SCIENCES	135	25	44	165	344	194	0	0	10	38	24	0	19	998
COMMUNICATION & THEATRE ARTS	38	70	49	115	194	125	15	17	8	137	0	7	121	896
SOCIOLOGY	53	61	26	56	76	193	6	7	13	132	0	5	118	746
BIOLOGY	40	144	73	130	34	44	2	12	23	115	20	9	24	670
PSYCHOLOGY	40	48	59	98	92	65	8	15	10	79	20	8	38	580
ENGINEERING	0	0	0	212	123	0	0	150	0	0	40	0	0	525
POLITICAL SCIENCE	31	23	22	91	100	76	13	40	2	34	0	5	38	475
COMPUTER SCIENCE	44	20	15	36	105	55	3	11	2	47	23	0	67	428
ART	16	16	11	57	83	39	3	0	7	39	37	1	27	336
ENGLISH	22	30	16	76	46	35	3	5	5	48	3	4	36	329
PHYSICAL EDUCATION & ATHLETICS	24	0	109	28	4	36	4	16	0	36	0	1	22	280
HISTORY	15	20	17	77	36	40	3	4	8	19	0	2	14	255
NATURAL RESOURCES	0	31	0	37	9	3	0	1	10	148	0	0	0	239
SPECIALIZED VOCATIONAL MAJOR	0	0	0	7	0	0	0	0	0	24	85	1	42	159
AGRICULTURE AND LIFE SCIENCES	0	0	0	65	0	0	0	3	32	45	0	0	0	145
ECONOMICS	7	8	6	62	14	27	3	0	1	4	0	0	4	136
OTHER	0	1	0	1	28	54	0	0	0	29	0	8	14	135
GEOGRAPHY	7	1	18	8	21	22	2	2	2	23	0	0	21	127
MATHEMATICS	13	9	9	25	5	9	0	8	7	25	0	0	13	123
SPANISH	13	5	5	19	10	22	0	0	0	15	0	0	8	97
CHEMISTRY	11	5	6	36	8	8	1	4	2	8	0	0	4	93
INTERDISCIPLINARY STUDIES	0	4	0	0	86	0	2	0	0	0	0	0	0	92
MUSIC	22	3	6	10	6	10	1	6	2	8	0	2	13	89

*at time of graduation

note: includes new freshmen from fall 1995 - summer 2002 graduating from another UW prior to fall 2006

Curriculum and Instruction
Course Analyses

Top 25 UW Colleges' Courses by Enrollment Fall 2006

Course			Total Enrolled Students (headcount)	Percent of All Enrollments in All Courses*
1	English Composition II	ENG 102	2927	6.4%
2	College Algebra	MAT 110	1968	4.3%
3	Intro College Algebra	MAT 105	1841	4.0%
4	First-Year Seminar	LEC 100	1618	3.5%
5	English Composition I	ENG 101	1614	3.5%
6	Introductory Psychology	PSY 202	1265	2.8%
7	Elementary Algebra	MAT 091	1191	2.6%
8	Intro Public Speaking	COM 103	1103	2.4%
9	Intro to Philosophy	PHI 101	1024	2.2%
10	US His to Civ War (ES)	HIS 101	1011	2.2%
11	Intro to Sociology	SOC 101	1002	2.2%
12	Intro to Business	BUS 101	633	1.4%
13	General Chemistry I	CHE 145	603	1.3%
14	Economics - Macro	ECO 203	518	1.1%
15	Concepts of Biology	BIO 109	465	1.0%
16	Intro Chemistry	CHE 125	453	1.0%
17	Hist of Western Civilization	HIS 105	441	1.0%
18	Intro Accounting	BUS 201	427	0.9%
19	Animal Biology	ZOO 101	415	0.9%
20	Intro to Literature	ENG 250	409	0.9%
21	Fitness for Life	PED 127	395	0.9%
22	Amer Gov & Politics	POL 104	377	0.8%
23	1st Semester Spanish	SPA 101	371	0.8%
24	Interpersonal Communication	COM 101	356	0.8%
25	Learning Skills	LEA 102	346	0.8%

notes:
The top 6 courses account for 1/4 of all UWC course enrollments
The top 10 courses account for 1/3 of all UWC course enrollments
The top 25 courses account for 1/2 of all UWC course enrollments

*This is the percentage of all enrollments in all courses in this semester. One student in one course is considered one course enrollment, regardless of the course's credit value. For example, in fall 2006, students enrolled in English Composition II account for 6.4% of all course enrollments for the semester.

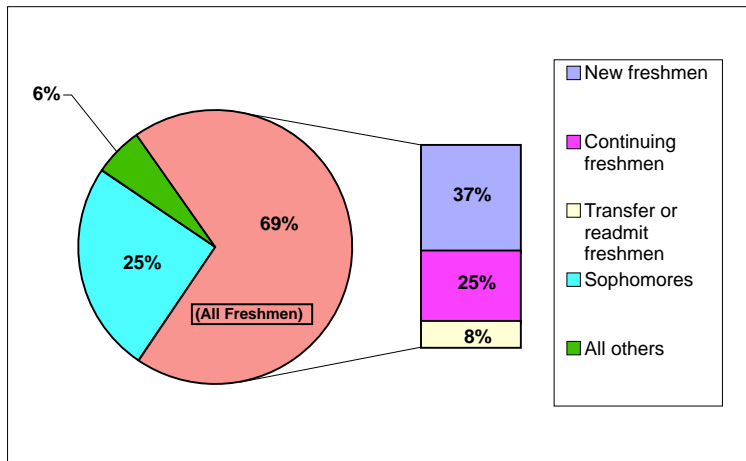
Curriculum and Instruction

Course Analyses

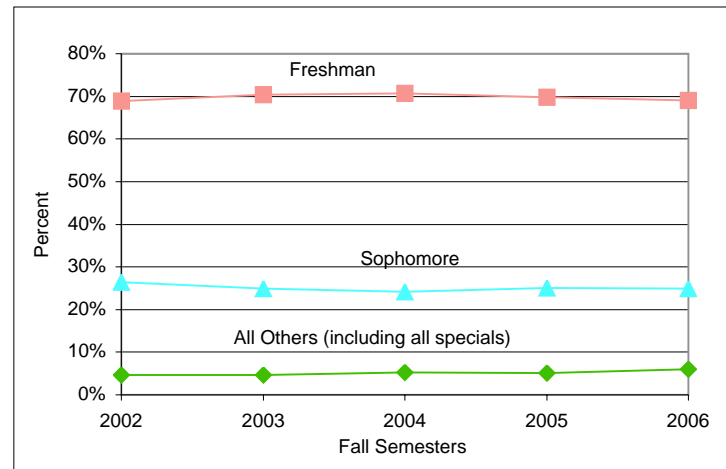
5 Year Summary of Fall Term 10th Day Enrolled Student Credit Hours by Academic Level

	Level	2002	2003	2004	2005	2006
Enrolled Credits	Freshmen	86463	89679	91017	88629	88998
	<i>New Freshmen</i>	47360	48238	47229	44823	47558
	Sophomore	33109	31739	31073	31817	32099
	All Others (including all specials)	5866	5951	6789	6518	7741
	Total	125438	127369	128879	126964	128838
Percent of Enrolled Credits	Freshmen	69%	70%	71%	70%	69%
	<i>New Freshmen</i>	38%	38%	37%	35%	37%
	Sophomore	26%	25%	24%	25%	25%
	All Others (including all specials)	5%	5%	5%	5%	6%

**Student Credit Hours by Academic Level
Fall 2006**



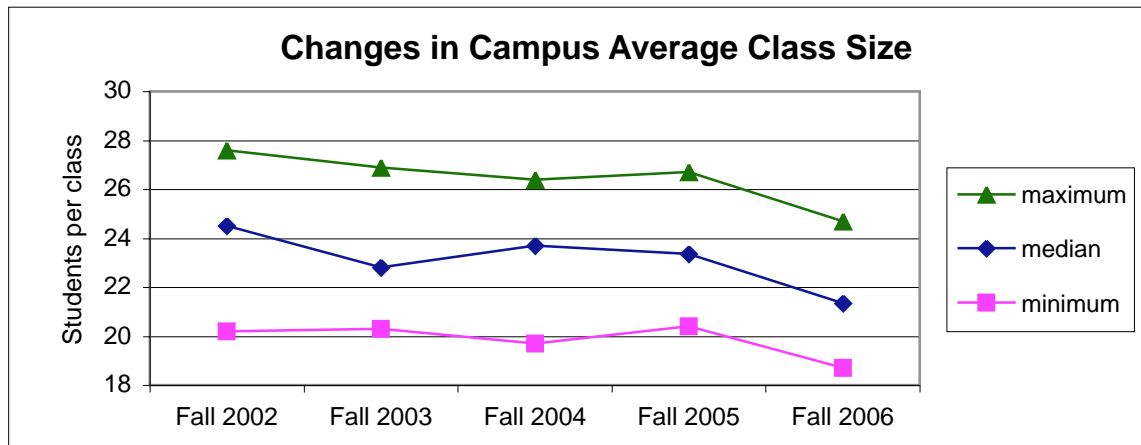
Changes in Student Credit Hour Enrollment by Status



Curriculum and Instruction
Course Analyses

5 Year Summary of Average Class Size by Campus - 10th Day Enrollments

Campus	Fall 2002	Fall 2003	Fall 2004	Fall 2005	Fall 2006
Baraboo	21.4	21.3	19.7	20.5	21.0
Barron	20.2	20.8	20.8	20.4	18.7
Fond du Lac	25.4	25.3	25.0	25.5	24.3
Fox	25.9	25.7	25.4	24.1	24.7
Manitowoc	25.9	26.9	26.4	24.6	21.6
Marathon	23.2	22.8	22.7	21.4	22.3
Marinette	26.6	22.3	24.0	24.0	20.8
Marshfield	23.4	22.8	22.3	22.7	20.5
Richland	24.5	25.2	24.8	21.4	19.7
Rock	21.4	20.3	21.4	20.7	20.6
Sheboygan	23.6	22.8	23.4	21.4	21.1
Washington	26.4	25.9	26.1	25.6	23.7
Waukesha	27.6	26.7	24.6	24.5	23.3
Online			20.8	26.7	24.5



**Curriculum and Instruction
Instructional Resources**

**Library Facts and Figures
2004 - 2005**

Library services for the University of Wisconsin Colleges are provided through a library at each campus and a Library Support Services (LSS) office located at UW-Fond du Lac. LSS provides centralized acquisitions, cataloging, and automated systems support for the thirteen campus libraries.

The professional librarians at each campus and at the LSS office work together as the UW Colleges Library Council to make purchasing, budgeting, and policy decisions for the benefit of the entire institution. The staff at each library provide their campus with local services including class and individualized library instruction, reference assistance, collection acquisitions, and access to materials at all campus libraries within the UW System, as well as from libraries world-wide through patron-initiated interlibrary loan and electronic document delivery to the patron's desktop computers. The librarians at UW-Washington County also provide library services to students enrolled in UW Colleges Online.

The profile presented below collectively highlights the personnel, budget, resources, and levels of service for all 13 campus libraries of the UW Colleges.

Staffing:	Librarians - fte:	Classified and LTE staff - fte	Student assistants - fte	Total Staff - fte
	25.10	14.19	9.42	48.71

Expenditures:	Instructional and Research Materials	Computer hardware and software	other operating expenditures	Total expenditures
	\$440,722	\$62,857	\$98,960	\$602,539

{print and av materials - \$380,389; electronic materials & databases - \$60,333}

Collection:	Print and AV Collection	Electronic books and online electronic journals	Print serial titles	licensed databases, e-journals and electronic newspaper aggregators
	607,229 volumes	137,000+	1,744	90

Circulation:	Circulation Transactions	Interlibrary Loan Transactions
	121,097	9,730

Service:	Weekly visits (gate count)	Research classes	Research class attendance
	27,524 patrons	584 Classes	10,512 Students

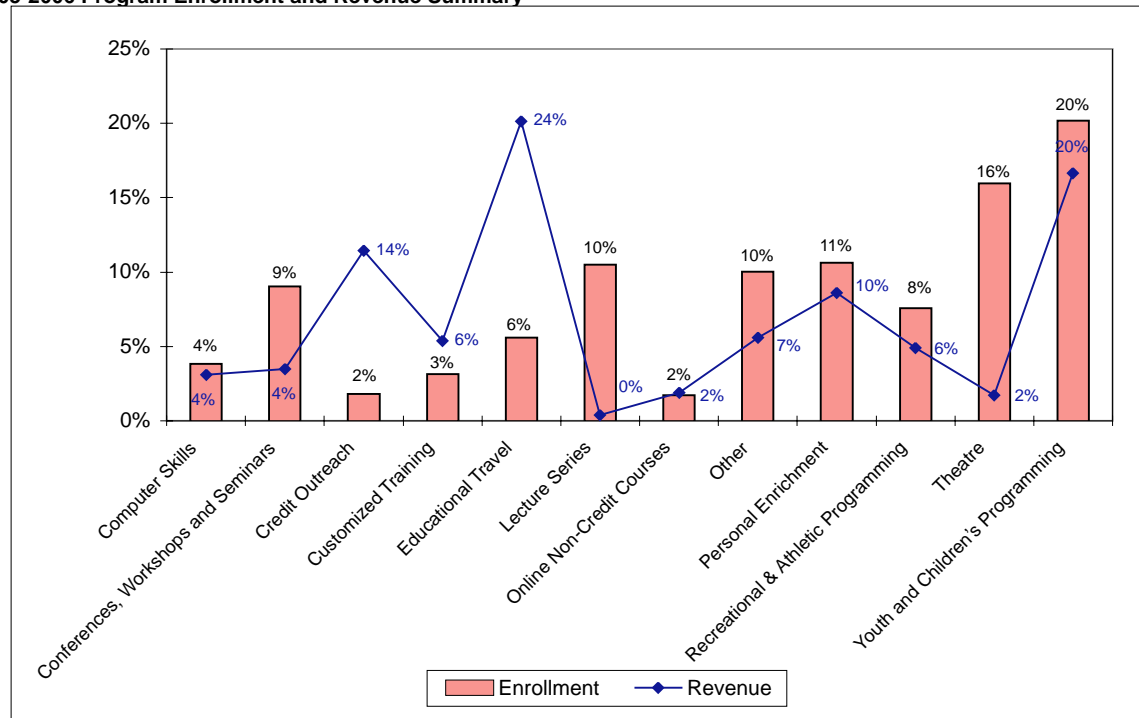
Curriculum and Instruction
Continuing Education

The UW Colleges Continuing Education Program

At the University of Wisconsin Colleges, Continuing Education (CE) is a collaborative venture between the Colleges and UW-Extension sharing the staffing costs for campus-based Continuing Education personnel. Credit and non-credit programs are coordinated and offered at the local level in response to the needs and interests of participants ranging from young children to senior citizens. In recent years, the UW Colleges have modified the types of programs offered, the length of time in which they occur, and the instructional delivery modes used in an effort to better serve specific audiences while still being fiscally viable for the University. Two examples of new noncredit programs are the online noncredit Business Communications Certificate offered via the Internet and the face-to-face management series of seminars for non-profit agencies and organizations.

2005-2006 Program Enrollment and Revenue Summary

Program	Enrollment	Revenue
Computer Skills	1354	\$80,727
Conferences, Workshops and Seminars	3201	\$90,544
Credit Outreach	640	\$296,826
Customized Training	1105	\$139,216
Educational Travel	1983	\$521,435
Lecture Series	3713	\$9,715
Online Non-Credit Courses	615	\$49,005
Other	3551	\$145,062
Personal Enrichment	3753	\$222,518
Recreational & Athletic Programming	2674	\$127,552
Theatre	5646	\$44,768
Youth and Children's Programming	7144	\$431,982
Totals	35379	\$2,159,350



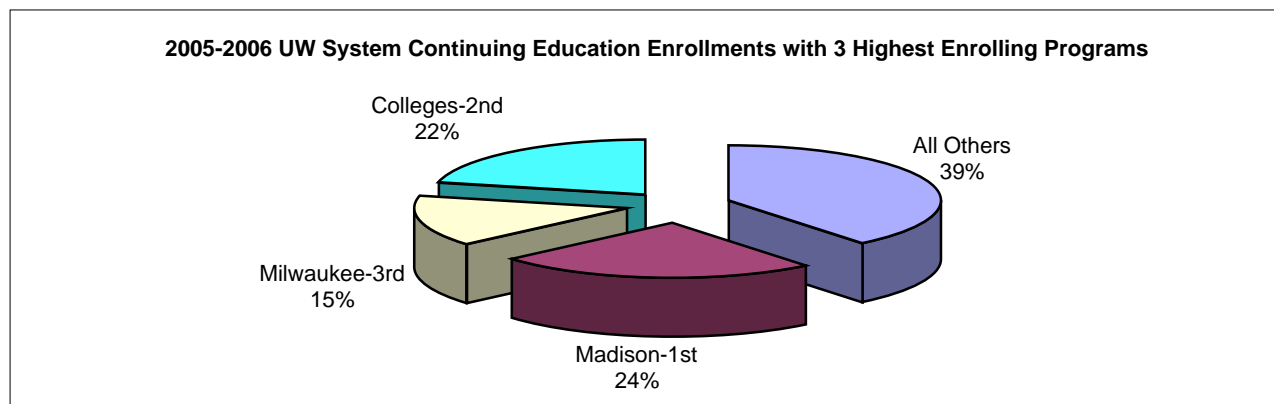
Curriculum and Instruction

Non-Credit Continuing Instruction

**Summary of Non-Credit Continuing Education Enrollments by Campus
With 2005-2006 UW System Institution Enrollments**

UW Colleges	2003-2004		2004-2005		2005-2006	
	Programs	Enrollment	Programs	Enrollment	Programs	Enrollment
Baraboo	116	1287	68	925	129	1369
Barron	55	1338	65	714	65	1262
Fond du Lac	138	2825	117	2066	203	3178
Fox Valley	149	2148	145	1946	136	3490
Manitowoc	89	1129	91	1975	84	1966
Marathon	175	2680	204	3409	192	3225
Marinette	54	671	55	2492	114	6024
Marshfield	120	1477	120	1761	236	4359
Richland	87	3245	90	2383	115	2770
Rock	35	568	16	562	41	867
Sheboygan	86	2159	86	2193	145	1726
Washington	37	576	48	934	72	2245
Waukesha	214	1294	106	763	342	1835
TOTAL	1,355	21,397	1,211	22,123	1,874	34,316

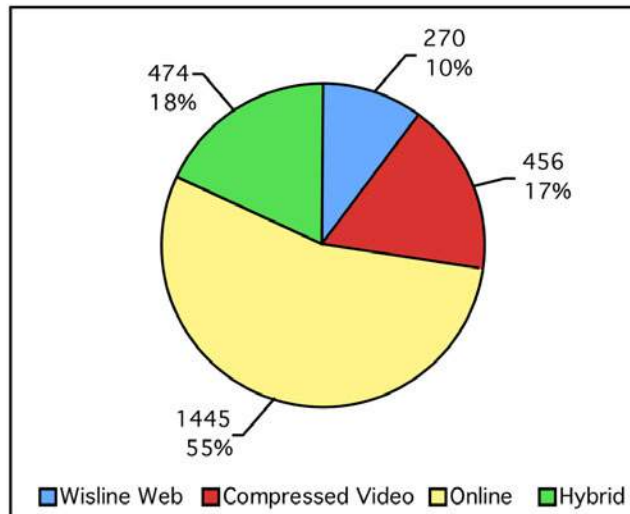
UW System	2005-06
Eau Claire	9483
Green Bay	4750
LaCrosse	3751
Madison	39,324
Milwaukee	23,975
Oshkosh	11,916
Parkside	3859
Platteville	1828
River Falls	1501
Stevens Point	8880
Stout	8071
Superior	2215
Whitewater	6922
UW Colleges	34,316
UW System	160,791



Curriculum and Instruction Alternative Modes of Instruction

Increasing Access Through Alternative Modes of Instruction

Alternative modes of instruction for students of the University of Wisconsin Colleges is integral to providing access to the Associate of Arts and Science degree, college credit certificate programs, and courses offered through continuing education. Instructional offerings delivered by these alternative delivery methods are taught by faculty and instructional academic staff who teach on one of the 13 UWC campuses. The same curriculum, course materials, evaluation methods, and grading standards are used in alternative format courses as those found in traditional classroom settings on the campus. Students can earn their entire associate degree from the University of Wisconsin Colleges via the Internet through UWC Online at <http://www.online.uwc.edu>. The college credits earned are transferable in the same way as any other credits earned at the UW Colleges.



Wisline Web

links an audio connection with common web-based courseware. Faculty and students converse while interacting with each other's documents and graphics in a real-time classroom setting.

Compressed Video

utilizes audio, computer, and video connections simultaneously. Faculty and students converse and interact with each other while viewing each other in a real-time classroom setting.

Online

courses provide a "virtual classroom" where students and faculty interact with each other totally over the Internet. Instructional courseware utilizes web pages, discussion groups, and UWC e-mail. Online courses do not meet at a particular time or place but they are structured within the academic semester time frame and require student class participation several times each week.

Hybrid

courses require students to spend one to two hours in class per week on a UWC campus and the remainder of the teaching and learning occurs online via the Internet.

Curriculum and Instruction Youth Options Program 3 Year Enrollment Summary

The Youth Options program gives eligible high school juniors and seniors the option of enrolling in courses at a UW Colleges campus. Enrollment is limited to courses that are not offered at the student's high school and are approved by the local school board for dual high school/college credit. To participate, students must complete the standard UW System Application for Undergraduate Admission and a Department of Public Instruction Program Plan and Report signed by a school board official or board designee. Tuition for these courses is paid by the local school board. The credits and grades earned become part of the student's high school and UWC official records, and are fully transferable within the guidelines applicable to all credits earned at the UW Colleges.

Youth Options Headcount Enrollments by Campus - Fall 2003 - Spring 2006 (summers excluded)

UWC Campus	fall 2003	spring 2004	fall 2004	spring 2005	fall 2005	spring 2006	Total
Baraboo/Sauk County	12	10	28	24	22	14	110
Barron County	36	47	28	53	17	60	241
Fond du Lac	35	28	31	31	14	16	155
Fox Valley	38	45	38	37	29	39	226
Manitowoc	7	10	7	9	17	8	58
Marathon County	18	20	16	21	12	16	103
Marinette	9	10	9	11	25	22	86
Marshfield/Wood County	14	17	24	24	20	22	121
Richland	7	11	4	9	6	9	46
Rock County	9	15	3	9	15	12	63
Sheboygan	14	17	22	21	9	15	98
Washington County	18	15	22	33	15	21	124
Waukesha	3	7	10	25	27	21	93
Online	0	1	1	1	1	4	8
UWC	220	253	243	308	229	279	1532

Youth Options Course Enrollments by Academic Department Fall 2003 - Spring 2006 (summers excluded)

	Headcount	% of total		Headcount	% of total
Anthropology/Sociology	220	9.8%	History	137	6.1%
Art	38	1.7%	Mathematics	280	12.5%
Biological Sciences	61	2.7%	Music	65	2.9%
Business/Economics	106	4.7%	Philosophy	245	11.0%
Chemistry	24	1.1%	Physical Education	32	1.4%
Communication/Theatre Arts	119	5.3%	Political Science	64	2.9%
Computer Science/Engineering/Physics/Astronomy	105	4.7%	Psychology	132	5.9%
English	273	12.2%	Women's Studies	4	0.2%
Geography/Geology	33	1.5%	World Languages	297	13.3%
			All Departments	2235	100%

Note: Classes offered through the World Languages, Mathematics, English and Philosophy departments make up nearly half of all Youth Options course enrollments.

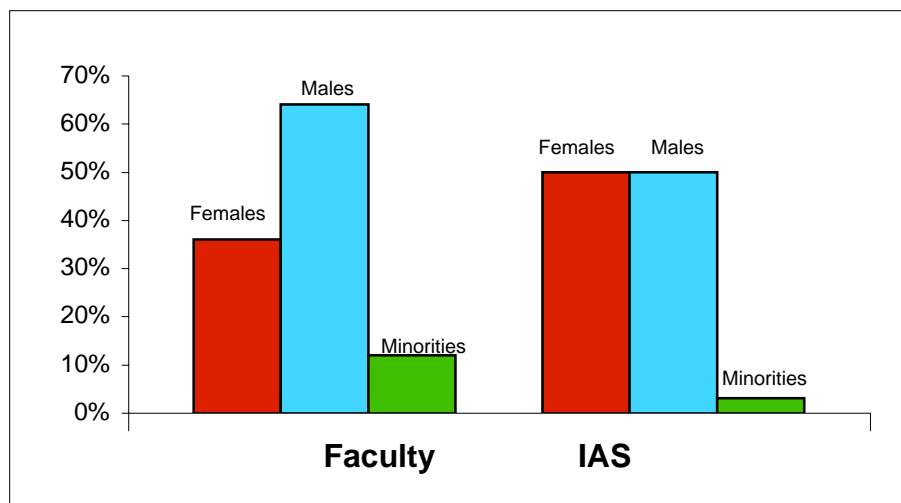
Faculty and Instructional Academic Staff

5 Year Summary of Instructional Personnel

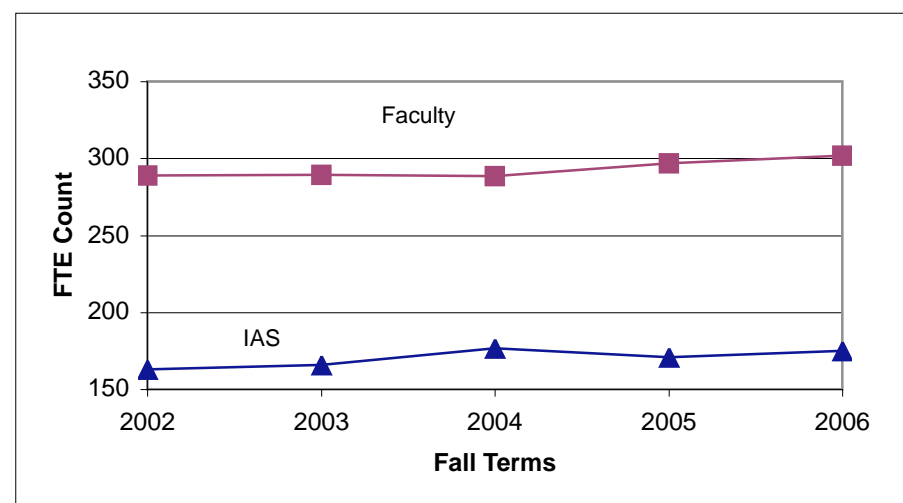
Type	Level	2002	2003	2004	2005	2006
Faculty	FTE	289	289.5	288.5	296.8	301.9
	Females	36%	36%	36%	36%	36%
	Males	64%	64%	64%	64%	64%
	Minority Status	9%	11%	11%	11%	12%
	Terminal Degrees	77%	79%	78%	80%	78%
IAS*	FTE	163	165.6	176.6	170.9	175.1
	Avg. Appt.	50.8%	50.3%	50.6%	47.8%	48.8%
	Females	44%	44%	46%	46%	50%
	Males	56%	56%	54%	54%	50%
	Minority Status	4%	5%	4%	3%	5%

*Instructional academic staff

FTE Faculty and Instructional Academic Staff Fall 2006



Changes in FTE Faculty and Instructional Academic Staff
Fall 2002 - Fall 2006

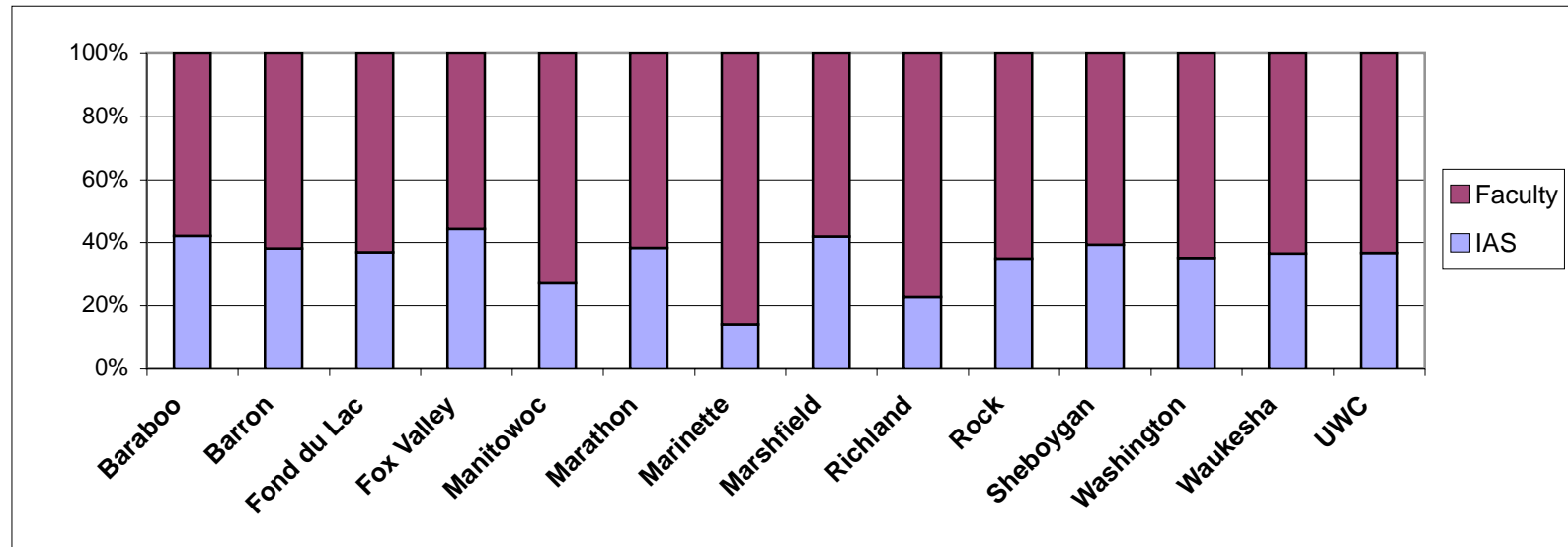


Faculty and Instructional Academic Staff

Fall 2006 UW Colleges Instructional Personnel Summary

	Baraboo	Barron	Fond du Lac	Fox Valley	Manitowoc	Marathon	Marinette	Marshfield	Richland	Rock	Sheboygan	Washington	Waukesha	UWC
Faculty														
FTE	16	16	18	34	18	35.4	18.25	15	16	25.15	18.75	25.2	45.15	301.9
Females	31%	50%	39%	34%	44%	28%	42%	47%	38%	34%	25%	36%	35%	36%
Males	69%	50%	61%	66%	56%	72%	58%	53%	62%	66%	75%	64%	65%	64%
Non-White	13%	19%	6%	6%	6%	6%	0%	33%	13%	16%	16%	16%	18%	12%
Instructional Academic Staff (IAS)														
FTE	11.6	9.8	10.5	27.1	6.7	22	3	10.8	4.7	13.5	12.1	13.6	25.9	175.1
Females	53%	38%	31%	59%	51%	66%	78%	49%	47%	54%	37%	28%	49%	50%
Males	47%	62%	69%	41%	49%	34%	22%	51%	53%	46%	63%	72%	51%	50%
Non-White	3%	9%	0%	7%	0%	0%	0%	2%	0%	0%	10%	23%	4%	5%

Proportion of Faculty to IAS



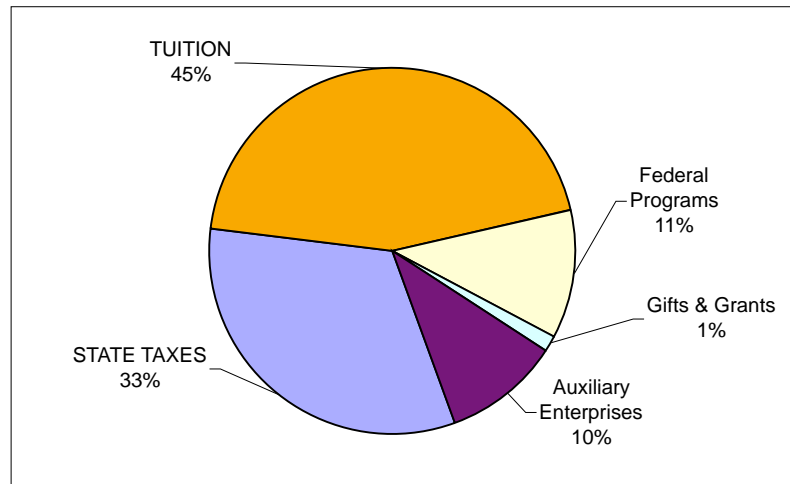
Finance

Budget Analyses

Budgeted Revenue by Source of Funds
ALL BUDGETS

	2002-03		2003-04		2004-05		2005-06	
	Dollars	%	Dollars	%	Dollars	%	Dollars	%
STATE TAXES	34,802,291	48%	26,769,419	36%	26,289,016	33%	27,313,669	32%
<i>General Program</i>	32,545,068	45%	23,562,418	32%	23,038,421	29%	22,643,829	27%
<i>Specific Purpose Restricted</i>	2,257,223	3%	3,207,001	4%	3,250,595	4%	4,669,840	6%
TUITION	21,894,030	30%	30,330,316	41%	34,577,440	44%	37,398,832	44%
Federal Programs	7,759,776	11%	8,831,475	12%	8,742,922	11%	9,551,454	11%
Gifts & Grants	1,039,830	1%	913,196	1%	728,296	1%	1,063,524	1%
Auxiliary Enterprises	7,062,062	10%	7,899,466	11%	9,025,457	11%	8,752,151	10%
Total	72,557,989	100%	74,743,872	100%	79,363,131	100%	84,079,630	100%

2005-2006 Budgeted Revenues



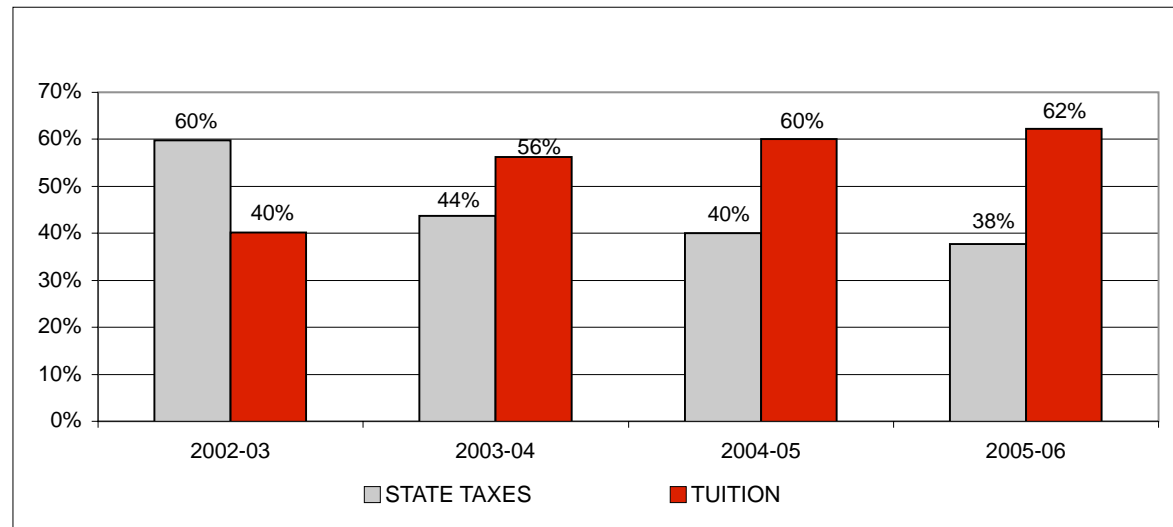
Finance

Budget Analyses

**Budgeted Revenue by Source of Funds
GENERAL ACADEMIC PROGRAM OPERATIONS BUDGET**

	2002-03		2003-04		2004-05		2005-06	
	Dollars	%	Dollars	%	Dollars	%	Dollars	%
STATE TAXES	32,545,068	60%	23,562,418	44%	23,038,421	40%	22,643,829	38%
TUITION	21,894,030	40%	30,330,316	56%	34,577,440	60%	37,398,832	62%
Total	54,439,098	100%	53,892,734	100%	57,615,861	100%	60,042,661	100%

Changes in State Tax and Tuition Support



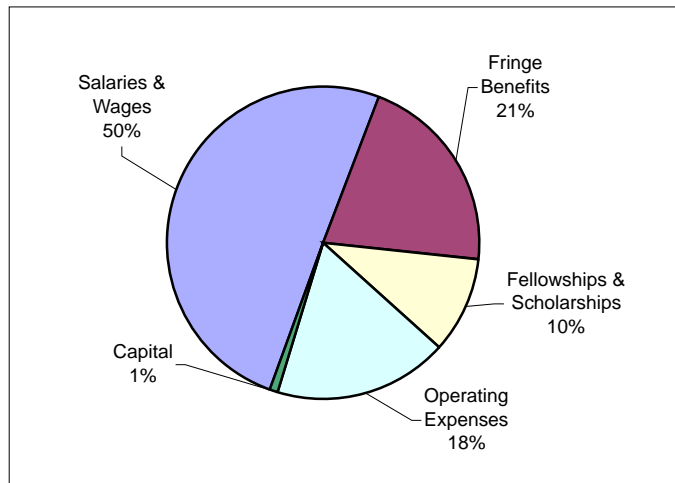
Finance

Budget Analyses

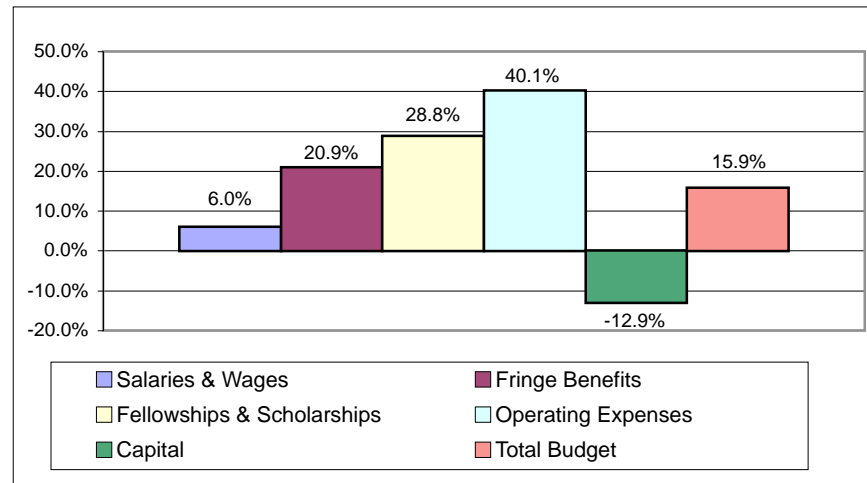
Budget by Classification

Program	2002-03	2003-04	2004-05	2005-06
Salaries & Wages	\$39,884,094	\$40,894,554	\$42,165,267	\$42,258,872
Fringe Benefits	\$14,577,082	\$13,888,109	\$15,256,544	\$17,619,208
Fellowships & Scholarships	\$6,393,775	\$7,268,047	\$7,293,420	\$8,237,069
Operating Expenses	\$10,879,340	\$12,026,838	\$14,009,371	\$15,246,912
Capital	\$823,698	\$666,324	\$638,529	\$717,569
Total Budget	\$72,557,989	\$74,743,872	\$79,363,131	\$84,079,630

2005-06 Budget by Program Area



Change in Budget by Classification 2003-2006



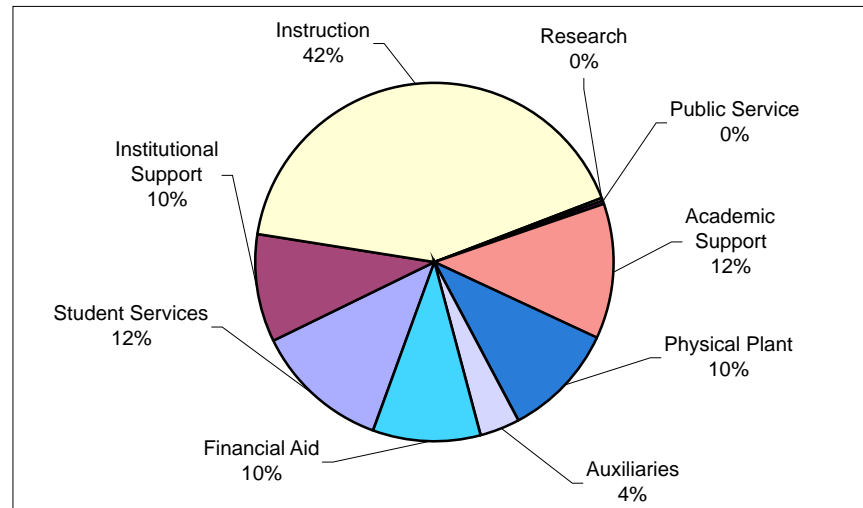
Finance

Budget Analyses

Budgeted Expenditures by Program Area

Program	2002-03	2003-04	2004-05	2005-06
Student Services	\$9,565,650	\$9,712,947	\$10,196,273	\$10,208,208
Institutional Support	\$7,232,016	\$7,117,599	\$7,738,834	\$8,309,620
Instruction	\$32,775,726	\$32,054,140	\$33,815,651	\$35,001,592
Research	\$21,430	\$786	\$786	\$133,286
Public Service	\$198,981	\$214,024	\$299,949	\$182,240
Academic Support	\$8,323,832	\$9,027,823	\$9,752,917	\$10,362,347
Physical Plant	\$5,634,742	\$6,807,208	\$7,168,427	\$8,678,067
Auxiliaries	\$2,365,473	\$2,506,813	\$3,113,196	\$3,031,641
Financial Aid	\$6,440,139	\$7,302,532	\$7,277,098	\$8,162,629
TOTAL	\$72,557,989	\$74,743,872	\$79,363,131	\$84,069,630

2005-06 Budget by Program Area



Finance

Municipal Support

Ownership and Insured Value of Facilities - 2006

UW College	Ownership	Insured Value	Outstanding Debt
Baraboo/Sauk County	City of Baraboo		
	Sauk County	\$16,272,662	\$910,000
Barron County*	Barron County	\$12,990,405	\$5,500,000
Fond du Lac	Fond du Lac County	\$23,856,177	\$9,807,100
Fox Valley	Outagamie County		
	Winnebago County	\$26,151,891	\$2,065,203
Manitowoc	Manitowoc County	\$11,546,937	\$3,266,548
Marathon County	Marathon County	\$44,153,900	\$0
Marinette	Marinette County	\$19,127,253	\$1,200,000
Marshfield/Wood County	City of Marshfield		
	Wood County	\$16,128,900	\$350,000
Richland	Richland County	\$11,965,522	\$1,255,000
Rock County	Rock County	\$14,213,103	\$1,006,000
Sheboygan	Sheboygan County	\$27,604,500	\$6,726,710
Washington County	City of West Bend		
	Washington County	\$22,196,564	\$3,762,978
Waukesha	Waukesha County	\$33,614,156	\$5,039,147.00
Totals		\$279,821,970	\$40,888,686

*Barron County does not track bonding by project, so the outstanding debt figure is an estimate.

Note: Section 66.51 of Wisconsin Statutes permits cities and counties to construct higher education facilities, subject to the approval of the Board of Regents. Since 1960 three cities and fourteen counties have collectively constructed more than 2.1 million square feet of space with an insured value of over \$279 million. Each municipality that participated in the creation of a UW Colleges' campus entered into a long-term agreement (at least 75 years) with the UW System. Although there are some variations in the terms of the agreements, they generally specify that the UW System is responsible for the academic program, movable equipment, physical plant services and utilities, while the municipality is responsible for repairs and improvements to the facilities.

Finance

Municipal Support

Budgeted City/County Expenditures - 2006

UW College	Debt Service	Capital Outlay	Operations	Total
Baraboo/Sauk County	\$149,662	\$56,700	\$93,300	\$299,662
Barron County*	\$478,000	\$126,000	\$32,000	\$636,000
Fond du Lac	\$997,393	\$2,000	\$56,350	\$1,055,743
Fox Valley	\$755,036	\$105,825	\$169,507	\$1,030,368
Manitowoc	\$350,093	\$22,000	\$21,290	\$393,383
Marathon County	\$0	\$30,750	\$58,735	\$89,485
Marinette	\$619,750	\$30,000	\$29,930	\$679,680
Marshfield/Wood County	\$350,000	\$80,000	\$87,305	\$517,305
Richland	\$41,256	\$29,125	\$23,875	\$94,256
Rock County	\$364,292	\$667,600	\$40,644	\$1,072,536
Sheboygan	\$1,102,674	\$155,739	\$104,635	\$1,363,048
Washington County	\$671,817	\$92,000	\$129,937	\$893,754
Waukesha	\$680,709	\$82,300	\$112,531	\$875,540
Grand Totals	\$6,560,682	\$1,480,039	\$960,039	\$9,000,760.00

*Barron County does not track bonding by project, so the debt service figure is an estimate

DEFINITIONS

Debt Service: The interest and principal paid in a given year on outstanding debt incurred by funding major construction and renovation projects.

Capital Outlay: Minor physical plant remodeling or improvement projects such as roof and floor replacements, sidewalk repairs and replacement of building systems such as water heaters. Note: Some of the cost of this category may eventually be placed in long-term bonding.

Operations: Physical plant operating costs such as insurance of property, maintenance contracts, and boiler/chiller chemicals.

Finance

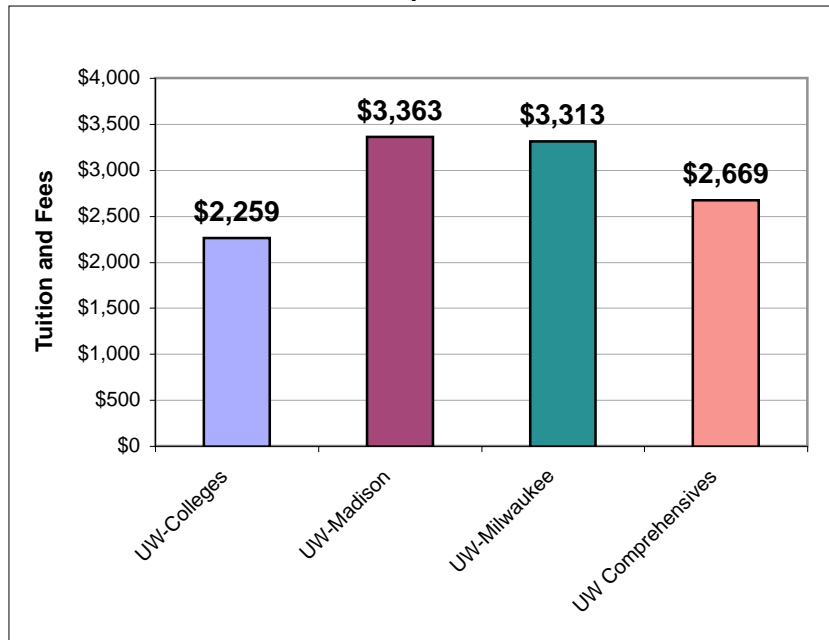
Student Cost to Attend

5 Year Tuition and Fee Summary

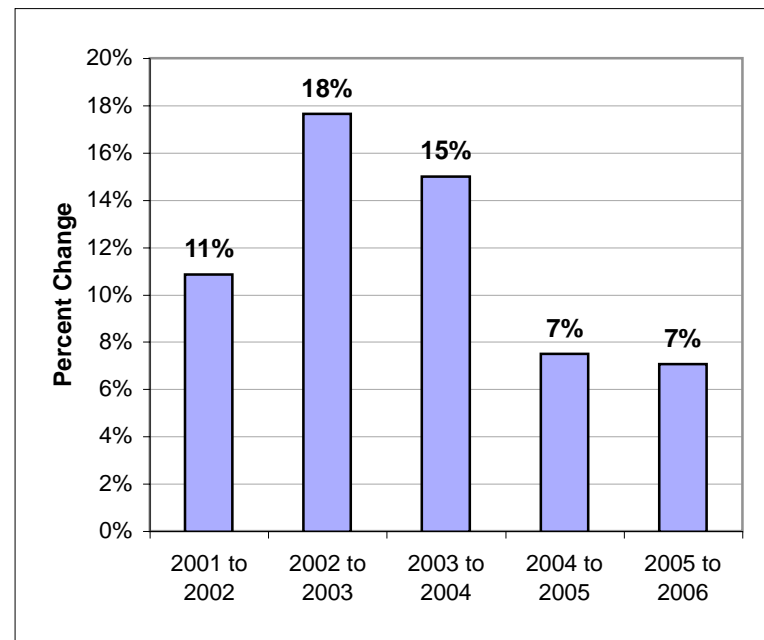
{one semester full-time tuition and fees}

	Fall 2002	Fall 2003	Fall 2004	Fall 2005	Fall 2006
Tuition	\$1,350	\$1,600	\$1,850	\$1,989	\$2,134
Average Fee {varies by campus}	\$101	\$107	\$113	\$121	\$125
Total Tuition and Fees	\$1,451	\$1,707	\$1,963	\$2,110	\$2,259

Fall 2006 Tuition and Fee Comparison with Other UW Institutions



Yearly Change in Tuition and Fees at the UW Colleges
2001 to 2006



note: tuition and fees only; living expenses are not included
See page 6 for a list of the UW Comprehensives

Finance

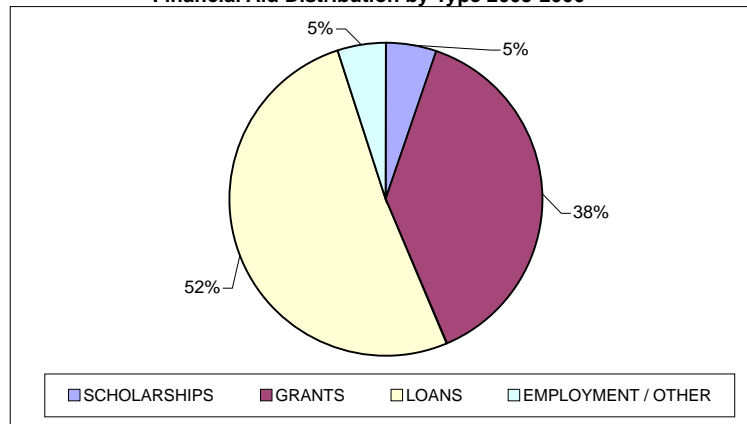
Student Financial Aid

2005-2006 Financial Aid by Campus

{excludes summer}

CAMPUS	Aid Recipients		Aid Types and Amounts					TOTAL AID /CAMPUS	Average \$ / Recipient
	Number	% of enrolled students	SCHOLARSHIPS	GRANTS	LOANS	EMPLOYMENT / OTHER			
Baraboo	312	56%	\$88,817	\$572,058	\$711,095	\$62,231	\$1,434,201	\$4,597	
Barron	349	59%	\$64,230	\$689,416	\$761,324	\$97,516	\$1,612,486	\$4,620	
Fond du Lac	479	62%	\$73,405	\$723,928	\$1,128,703	\$119,583	\$2,045,619	\$4,271	
Fox Valley	920	53%	\$273,489	\$1,420,196	\$2,012,629	\$218,598	\$3,924,912	\$4,266	
Manitowoc	351	60%	\$101,869	\$641,803	\$714,504	\$69,446	\$1,527,622	\$4,352	
Marathon	759	58%	\$160,566	\$1,650,720	\$1,734,460	\$156,108	\$3,701,854	\$4,877	
Marinette	265	58%	\$84,740	\$403,018	\$550,451	\$41,659	\$1,079,868	\$4,075	
Marshfield	431	73%	\$117,491	\$890,366	\$956,388	\$139,469	\$2,103,714	\$4,881	
Richland	330	73%	\$126,711	\$582,610	\$822,997	\$66,967	\$1,599,285	\$4,846	
Rock	545	59%	\$72,225	\$1,074,992	\$1,322,795	\$189,126	\$2,659,138	\$4,879	
Sheboygan	384	56%	\$111,688	\$662,453	\$744,846	\$69,070	\$1,588,057	\$4,136	
Washington	453	47%	\$106,654	\$587,161	\$1,032,111	\$62,250	\$1,788,176	\$3,947	
Waukesha	920	46%	\$124,343	\$1,147,490	\$2,175,169	\$132,843	\$3,579,845	\$3,891	
Online	110	11%	\$10,046	\$205,884	\$347,221	\$24,368	\$587,519	\$5,341	
UW Colleges	6608	54%	\$1,516,274	\$ 11,252,095	\$ 15,014,693	\$ 1,449,234	\$ 29,232,296	\$4,424	

Financial Aid Distribution by Type 2005-2006



Financial Aid Participation at the 13 Traditional Campuses

Rank	% Enrolled Students Receiving Aid	Total Aid Disbursed/ Campus	Average \$ / Recipient
High	Marshfield & Richland 73%	Fox Valley \$3,924,912	Marshfield \$4,881
Median	Marathon & Marinette 58%	Washington \$1,788,176	Manitowoc \$4,352
Low	Waukesha 46%	Marinette \$1,079,868	Waukesha \$3,891

Finance

Student Financial Aid

3 Year Summary of Financial Aid Awards by Type

	2003 - 2004 ACADEMIC YEAR		2004 - 2005 ACADEMIC YEAR		2005 - 2006 ACADEMIC YEAR	
	# RECIPIENTS	\$\$ AMOUNT	# RECIPIENTS	\$\$ AMOUNT	# RECIPIENTS	\$\$ AMOUNT
Scholarships---not need-based						
Institutional	547	\$ 399,391	542	\$ 434,898	604	\$ 558,228
Non-Institutional/Private	724	\$ 780,131	747	\$ 841,229	716	\$ 904,831
Academic Excellence Scholarship	15	\$ 45,495	22	\$ 58,195	23	\$ 53,215
Total Scholarships	1142	\$ 1,225,017	1158	\$ 1,334,322	1179	\$ 1,516,274
Grants---need-based						
Federal Pell Grant	2890	\$ 6,439,425	2903	\$ 6,403,892	2754	\$ 6,204,338
Federal Supplemental Ed Opportunity Grant	621	\$ 514,999	560	\$ 487,328	530	\$ 476,113
Miscellaneous Federal Need Based Grants	43	\$ 93,946	36	\$ 73,200	32	\$ 67,189
Wisconsin Higher Education Grant	2442	\$ 2,979,030	2770	\$ 3,453,457	2553	\$ 4,193,604
Miscellaneous State Need-based Grants	161	\$ 187,675	147	\$ 182,245	126	\$ 165,501
Need Based Institutional Grants & Scholarships	136	\$ 105,196	159	\$ 131,313	150	\$ 145,350
Total Grants	2945	\$ 10,320,271	3026	\$ 10,731,435	2994	\$ 11,252,094
Loans						
Federal Subsidized Stafford	2551	\$ 5,091,081	2902	\$ 5,957,670	2887	\$ 7,131,897
Federal Unsubsidized Stafford	2409	\$ 5,609,178	2604	\$ 6,155,929	2358	\$ 6,601,686
Federal Perkins Loan	218	\$ 327,216	200	\$ 307,544	106	\$ 175,007
Federal Plus Loan	79	\$ 299,584	98	\$ 402,839	139	\$ 682,392
Alternative & Miscellaneous Student Loans	27	\$ 74,206	56	\$ 183,236	100	\$ 423,711
Total Loans	4055	\$ 11,401,266	4420	\$ 13,007,218	4794	\$ 15,014,693
Employment and Other Resources						
Federal Work-Study	542	\$ 496,246	560	\$ 486,729	587	\$ 503,742
Federal Veterans' Benefits	57	\$ 259,120	55	\$ 218,951	50	\$ 234,099
Wisconsin Veterans' Benefits	1	\$ 2,703	1	\$ 3,922	3	\$ 10,280
State Vocational Rehabilitation Grant (DVR)	59	\$ 108,080	61	\$ 165,777	80	\$ 304,155
Non-Resident Fee Remission	8	\$ 74,889	6	\$ 34,074	4	\$ 26,035
Wisconsin Veterans' Tuition Remission					211	\$ 370,924
Total Employment and Other Resources	646	\$ 941,038	656	\$ 909,453	899	\$ 1,449,235
Unduplicated Recipients and Totals for All Aid Types	5997	\$ 23,887,591	6270	\$ 25,982,428	6608	\$ 29,232,296
Percent of Enrollment Receiving Financial Aid	49%		52%		54%	

University of Wisconsin-Baraboo/Sauk County

Address: 1006 Connie Road
Baraboo, WI 53913-1098
Phone: 608/356-8351
Website: <http://www.baraboo.uwc.edu>

Interim Dean: Thomas Pleger
Board of Visitors Representative: Allen Paschen
Student Government President: Brittany Konieczny
Municipal Partner(s): City of Baraboo and Sauk County

Student Profile

Headcount	Enrollment:		Connections: Top 3 High Schools for New Freshmen
	Full-time students:	354 (57%)	Baraboo, Reedsburg, Portage Turner
	Part-time students:	266 (43%)	
	Students age 22+	211 (34%)	Top 3 UW System Transfer Destinations
	Students receiving financial aid	56%	Madison, La Crosse, Stevens Point
	Non-Credit Enrollments 2005-2006	1369	

Instructional Profile

Faculty:	16 FTE	Instructional Academic Staff:	11.6 FTE
	31% female		53% female
	13% minority		3% minority
	76% with terminal degrees		

Local Foundational Support:	\$20,00 in student scholarships; \$5,000 in campus support
Collaborative Initiatives:	Baccalaureate completion programs with UW-Milwaukee, UW-Platteville, UW-Green Bay, and UW Superior; Youth Options and pre-college programs

UW-Baraboo/Sauk County is located on 68 acres on the northwest side of Baraboo. Just a short drive from Devil's Lake State Park, Madison and Wisconsin Dells, it is part of a region that is rich in beauty, history, and culture. The campus maintains an enrollment of approximately 550 students, about 30 percent of whom are age 22 and older. The majority of UW Baraboo/Sauk County students come from Sauk, Columbia, Dane, Adams and Juneau counties.

The campus offers a comprehensive University of Wisconsin academic experience-with challenging coursework, top-notch support systems, and high-quality co-curricular opportunities. It now has the most comprehensive first-year experience of any UW campus, providing students with comprehensive advising, co-curricular, and extra-curricular programming. A number of programs combine coursework and practical application. The Internship Program provides 3 credits of classroom work with 40 hours of real-world experience. In addition, study abroad opportunities allow students to explore other countries and cultures.

The campus offers a wide range of co-curricular activities, including visiting artists, guest speakers, and other diversity programming. In addition, student clubs and organizations plan a wide range of programs-from career fairs and tours of Harley Davidson to rafting excursions. Opportunities for extra-curricular involvement include: varsity and intramural sports, Student Government Association, Business Club, Future Educators, Outdoor Club, Native American Student Organization, Student Ambassadors, Honor Society, a student newspaper, and performing arts groups.

UW-Baraboo/Sauk County also offers a wide range of community outreach activities. Continuing Education Extension (CEE) conducts more than 150 non-credit programs each year, serving more than 1,600 participants. In addition, the campus offers gallery exhibits, theatre productions, recitals, and concerts throughout the year. The local economic impact of the campus is estimated at nearly \$8 million annually.

University of Wisconsin-Barron County

Address: 1800 College Drive
Rice Lake, WI 54868-2497
Phone: 715/234-8176
Website: <http://www.barron.uwc.edu>

Dean: Paul W. Chase, Ph.D.
Board of Visitors Representative: Burnell Hanson
Student Government President: Matthew Tschann
Municipal Partner(s): Barron County

Student Profile

Headcount	Enrollment:		Connections: Top 3 High Schools for New Freshmen
	Full-time students:	280 (47%)	Rice Lake, Spooner, Chetek Senior
	Part-time students:	311 (53%)	
	Students age 22+	121 (20%)	
	Students receiving financial aid	59%	Top 3 UW System Transfer Destinations
	Non-Credit Enrollments 2005-2006	1262	Eau Claire, River Falls, Stout

Instructional Profile

Faculty:	16 FTE	Instructional Academic Staff:	9.8 FTE
	50% female		38% female
	19% minority		9% minority
	73% with terminal degrees		

Local Foundational Support:	\$34,000 in student scholarships; \$18,000 in campus support
Collaborative Initiatives:	Baccalaureate degree completion programs with UW-Milwaukee, Platteville, Superior and Green Bay; collaboration with regional CESAs offering college-level courses in high schools via distance education; pilot degree-completion program with Wisconsin Indianhead Technical College

UW-Barron County lies on the bank of the Red Cedar River in Rice Lake, two hours east of the Twin Cities. Eagles fly up and down the river daily, and hawks, osprey, fox and deer are frequent visitors. In addition to these wild attractions, the campus hosts a lovely international friendship garden created by gardeners from Rice Lake's sister city Miharu, Japan. The garden complements an active campus fine arts program that has made the UW-Barron County a center for culture in the region.

The UW-Barron County recruits students from 50 high schools in 16 counties, making it an important access point for higher education in the sparsely populated northwest corner of Wisconsin. In addition to this expansive recruiting area, the campus has extended its outreach significantly by providing college-level courses through interactive television to a dozen smaller high schools in the region. The campus also has a close working relationship with the Wisconsin Indianhead Technical College in Rice Lake, sharing both facilities and programming.

This summer, UW-Barron County completed its first new construction since the campus's original 7 buildings opened in 1968. The new building connects the administration building with the classroom building and adds state-of-the-art science laboratories and classrooms that were designed with the help of a National Science Foundation/Keck Foundation Project Kaleidoscope consultancy. It also features smart classrooms, student government and organizational spaces, a learning center, and customer-friendly student services and business office locations.

University of Wisconsin-Fond du Lac

Address: 400 University Drive
Fond du Lac, WI 54935-2950
Phone: 920/929-3600
Website: <http://www.fdl.uwc.edu>

Dean: Daniel J. Blankenship Ph.D
Board of Visitors Representative: John Wright
Student Government President: David Rebedew
Municipal Partner(s): Fond du Lac County

Student Profile

Headcount	Enrollment:		Connections: Top 3 High Schools for New Freshmen
	Full-time students:	477 (62%)	Fond du Lac, Waupun, Winnebago Lutheran
	Part-time students:	290 (38%)	
	Students age 22+	206 (27%)	Top 3 UW System Transfer Destinations
	Students receiving financial aid	62%	Oshkosh, Milwaukee, Madison
	Non-Credit Enrollments 2005-2006	3178	

Instructional Profile

Faculty:	18 FTE	Instructional Academic Staff:	10.5 FTE
	39% female		31% female
	6% minority		0% minority
	63% with terminal degrees		

Local Foundational Support:	\$33,150 in student scholarships; \$14,825 in campus support
Collaborative Initiatives:	Baccalaureate degree completion programs hosted on campus with UW-Green Bay, Milwaukee, Oshkosh, Stevens Point and Superior

UW-Fond du Lac is located on 183 acres of prime natural and maintained land on the outskirts of the city of Fond du Lac. Students from 27 high schools in six counties have chosen to attend UW-Fond du Lac, most working while enrolled. Expanded services to students include a well developed student support center with instructional assistance, career guidance, a college career orientation/exploration program for incoming students, and a transitions program, which provides assistance to students throughout their experience on campus. The campus encourages service learning instruction and interdisciplinary study as tools for increasing student success.

Developments on campus are guided by a strategic plan which has four goals: creating a diverse community of learners; being an academic and cultural resource; being a leader in learner-centered service and instruction, and sustaining a healthy campus community. As an example of recent success in serving as a cultural resource for the community, UW-Fond du Lac recently launched a performing arts series.

Unique to the UW-Fond du Lac campus is a student newspaper (the "*Falcon Flier*") that is published monthly as an insert in the local newspaper, the "Reporter." Inclusion in the local newspaper provides the "Falcon Flier" with a wide circulation covering two counties and approximately 40,000 readers, which helps to keep the community in touch with the campus and students on a regular basis.

University of Wisconsin-Fox Valley

Address: 1478 Midway Road
Menasha, WI 54952-1297
Phone: 920/832-2600
Website: <http://www.uwfox.uwc.edu>

Dean: James W. Perry, Ph.D.
Board of Visitors Representative: Keith Summers
Student Government President: Arjun Dhillon
Municipal Partner(s): Outagamie and Winnebago Counties

Student Profile

Headcount	Enrollment:		Connections: Top 3 High Schools for New Freshmen
	Full-time students:	960 (55%)	Neenah, Appleton East, Appleton West
	Part-time students:	771 (45%)	
	Students age 22+	553 (32%)	Top 3 UW System Transfer Destinations
	Students receiving financial aid	53%	Oshkosh, Green Bay, Milwaukee
	Non-Credit Enrollments		
	2005-2006	3490	

Instructional Profile

Faculty:	34 FTE	Instructional Academic Staff:	27.1 FTE
	34% female		59% female
	6% minority		7% minority
	77% with terminal degrees		

Local Foundational Support:	\$131,000 in student scholarships; \$21,776 in campus support
Collaborative Initiatives:	On-campus baccalaureate degree programs with UW-Stevens Point, Platteville, and Oshkosh One+One Program with Fox Valley Technical College – Alternative Career in Teaching Program

UW-Fox Valley in Menasha is the second largest of the UW Colleges campuses. The campus is home to the Barlow Planetarium, the state's largest and most technologically advanced sky theatre, attracting 40,000 guests each year. UW-Fox Valley also boasts the state mineralogical museum – the Weis Earth Science Museum.

Each year the UW-Fox Valley plays host to a number of cultural events. The Aaron Bohrod Gallery hosts up to eight public art exhibits each year. Sponsored by the UW-Fox Valley Foundation, the campus also hosts a Scholars Series, bringing in regional and national experts 14 times each year to provide campus and public seminars on issues of importance in all fields of academic endeavor.

The campus is known for a first-year student seminar that is a universal requirement for all new students, as well as a host of interdisciplinary learning communities joining two or three courses from different disciplines, all taught with a unifying theme. In addition, many UW-Fox Valley students are actively engaged in undergraduate research. A Student Scholars Fund allows them to attend and participate at regional and national conferences in fields of their interest.

University of Wisconsin-Manitowoc

Address: 705 Viebahn Street
Manitowoc, WI 54220-6601

Phone: 920/683-4700

Website: <http://www.uwmanitowoc.uwc.edu>

Dean: Daniel S. Campagna, Ph.D.

Board of Visitors Representative: Brian Johnson

Student Government President: Justin Nickels

Municipal Partner(s): Manitowoc County

Student Profile

Headcount	Enrollment:		Connections: Top 3 High Schools for New Freshmen
	Full-time students:	393 (76%)	Lincoln (Manitowoc), Washington, Manitowoc Lutheran
	Part-time students:	195 (24%)	
	Students age 22+	162 (28%)	
	Students receiving financial aid	60%	Top 3 UW System Transfer Destinations
	Non-Credit Enrollments 2005-2006	1966	Green Bay, Milwaukee, Oshkosh

Instructional Profile

Faculty:	18 FTE	Instructional Academic Staff:	7 FTE
	44% female		51% female
	6% minority		0% minority
	74% with terminal degrees		

Local Foundational Support:	\$10,000 in student scholarships; \$10,250 in campus support
Collaborative Initiatives:	On campus baccalaureate degree completion programs with UW-Milwaukee and Oshkosh; extended degree programs with UW-Platteville, Green Bay and Superior.

UW-Manitowoc is beautifully situated along the shore of Lake Michigan and beside a city park on the south side of Manitowoc. The campus' three buildings, Lakeside Hall, Founders Hall and Hillside Hall are connected and include a 350 seat theater, computer and science laboratories, state-of-the-art classrooms, library, learning center, art gallery, gym, weight room, greenhouse and offices. The campus is home to an office of the Wisconsin Sea Grant, a statewide program dedicated to the stewardship of the Great Lakes and ocean resources.

Student organizations and activities are especially popular and active on campus. Students can choose from student government, a variety of academic, professional or special interest groups, band, chorus or theater, and the student newspaper. The athletic program includes both varsity and intramural sports. Students also have the opportunity to work with faculty as research assistants. Among UW-Manitowoc's faculty is a Wisconsin Carnegie Professor of the Year and two UW Regents' Teaching Award winners.

The talents of UW-Manitowoc students and community members are joined through the Lakeshore Wind Ensemble, Lakeshore Big Band, chorus, and University Theatre productions. Other campus/community opportunities include the Arts on Campus series, the annual Wellness Fair, art exhibits, and the Continuing Education program which provides non-credit courses, diversity circles and a youth theater program. UW-Manitowoc is also home to an Upward Bound/TRIO program, which is federally funded and prepares low-income and first-generation high school students for college.

University of Wisconsin-Marathon County

Address: 518 South 7th Avenue
Wausau, WI 54401-5396
Phone: 715/261-6100
Website: <http://www.uwmc.uwc.edu>

Dean: James F. Veninga, Ph.D.
Board of Visitors Representative: Hooshang Zeyghami
Student Government President: Christopher Hahn
Municipal Partner(s): Marathon County

Student Profile

Headcount	Enrollment:		Connections: Top 3 High Schools for New Freshmen
	Full-time students:	805 (61%)	Wausau West, DC Everest, Wausau East
	Part-time students:	515 (39%)	
	Students age 22+	352 (27%)	
	Students receiving financial aid	58%	Top 3 UW System Transfer Destinations
	Non-Credit Enrollments 2005-2006	3225	Stevens Point, Madison, Eau Claire

Instructional Profile

Faculty:	35 FTE	Instructional Academic Staff:	22 FTE
	28% female		66% female
	6% minority		0% minority
	77% with terminal degrees		

Local Foundational Support:	\$101,474 in student scholarships and \$30,000 in campus support
Collaborative Initiatives:	Baccalaureate degree completion programs with UW-Oshkosh in nursing; with UW-Stevens Point in general studies and business.

UW-Marathon County, located in central Wausau beside a 78 acre forested park, is the third largest UW Colleges campus. The faculty and staff take pride in the liberal arts instruction provided to its 1300+ students. In addition to teaching, research and professional development, civic engagement is a high priority. Every year the campus sponsors public forums and fine arts programming, bringing outstanding artists, scholars and performers to the campus.

In keeping with the goals of the UW System's Plan 2008, minority student enrollment at UW-Marathon County has increased 100% since 1996 with 10% of the student body now minority. Course offerings have changed as well, with a greater variety of multicultural perspectives within the curriculum.

UW-Marathon County continues to benefit from the investment of public funding through Marathon County. In 1996, the county supported a \$7 million facilities renovation and expansion. In 2003, the County provided \$1.4 million for a new art building and mathematics center. In 2004-05 the County provided \$1.2 million for the remodeling and expansion of the field house. A \$2.9 million project to upgrade science labs is scheduled to begin January 2007. A \$3.2 million federal grant was secured toward the cost of a new facility that will include a theatre, tentatively scheduled for 2008. Many projects have benefited from significant private sector support as well, and the UW-Marathon County Foundation, with assets of \$2.2 million, has greatly expanded its contribution to the campus by providing support for faculty development, technology projects, and scholarships.

The UW-Marathon County Student Association continues to provide exceptional opportunities through more than twenty clubs. The campus participates in the Wisconsin Collegiate Conference, fielding golf, soccer, volleyball, and basketball teams. There is also an active intramural sports program.

University of Wisconsin-Marquette

Address: 750 West Bay Shore Street
Marinette, WI 54143-4299
Phone: 715/735-4300
Website: <http://www.marquette.uwc.edu>

Dean: Paula T. Langteau
Board of Visitors Representative: Ted Sauve
Student Government President: Audra LaPierre
Municipal Partner(s): Marinette County

Student Profile

Headcount

Enrollment:
Full-time students: 257 (56%)
Part-time students: 203 (44%)
Students age 22+ 130 (28%)
Students receiving financial aid 58%
Non-Credit Enrollments 2005-2006 6024

Connections: Top 3 High Schools for New Freshmen
Marinette Senior, Peshtigo, Menominee

Top 3 UW System Transfer Destinations
Green Bay, Oshkosh, Stevens Point

Instructional Profile

Faculty: 18 FTE
42% female
0% minority
78% with terminal degrees

Instructional Academic Staff: 3 FTE
78% female
0% minority

Local Foundational Support:

\$17,600 in student scholarships; \$13,100 in campus support

Collaborative Initiatives:

Degree completion programs with UW-Milwaukee, Green Bay, Superior, Platteville, and Stevens Point and with Silver Lake College; Partnership Program with area high schools

UW-Marquette is located in the city of Marinette on the west shore of Green Bay, an hour's drive north of the city of Green Bay. The campus enrolls many students from adjoining Menominee County, Michigan (who pay Wisconsin in-state tuition), as well as the largest percentage of international students of any campus in the UW. UW-Marquette students receive individualized attention in small classes, choosing courses from an innovative curriculum, with learning community courses linking two or three disciplines to explore real-world issues in courses proven to enhance student success. Academic opportunities are also offered through evening courses, distance education courses, and undergraduate research opportunities. Students benefit from one-on-one interaction and collaboration, as well as computer-based tutorial services in writing, math, computer science, natural science and world languages.

In addition to the small classes and individualized attention, UW-Marquette offers leadership and co-curricular opportunities, including the Phi Theta Kappa honor society, a student senate, and the Crew, a student organization that provides volunteer services to needy community members in need. UW-Marquette also offers a host of cultural enrichment activities, serving as a cultural hub for the surrounding communities. Since 1967, Theatre on the Bay has given students experience in all areas of theatre from managing a box office to acting in major productions. A playwrights' workshop is offered in the spring, culminating in the Bards on the Bay festival. Other programs open to the public include the West Shore Chorale, Bay Shore Orchestra, Community Jazz Ensemble, and the Northeast Wisconsin Concert Band.

University of Wisconsin-Marshfield/Wood County

Address: 2000 W. Fifth Street
Marshfield, WI 54449-3310

Phone: 715/389-6500

Website: <http://www.marshfield.uwc.edu>

Dean: Andrew Keogh, Ed.D.

Board of Visitors Representative: Karl Zimmermann

Student Government President: Courtney Pease

Municipal Partner(s): City of Marshfield and Wood County

Student Profile

Headcount	Enrollment:		Connections: Top 3 High Schools for New Freshmen
	Full-time students:	344 (58%)	Marshfield Senior, Stratford, Spencer
	Part-time students:	250 (42%)	
	Students age 22+	186 (31%)	
	Students receiving financial aid	73%	Top 3 UW System Transfer Destinations
	Non-Credit Enrollments 2005-2006	4359	Stevens Point, Eau Claire, Stout

Instructional Profile

Faculty:	15 FTE	Instructional Academic Staff:	10.8 FTE
	47% female		49% female
	33% minority		2% minority
	81% with terminal degrees		

Local Foundational Support:	\$65,669 in student scholarships; over \$100,000 in campus support
Collaborative Initiatives:	Collaborative degree programs with UW-Eau Claire and Stevens Point; dual enrollment with UW-Stevens Point; Youth Options programs with Neillsville and Stratford high schools

UW-Marshfield/Wood County, located in central Wisconsin, is a campus of 114 acres, including a 109 acre natural forest arboretum. The faculty and staff are dedicated to the Wisconsin Idea of bringing higher education to the state's residents. The distinguished faculty teaches small classes, giving students personal attention. The UW-Marshfield/Wood County faculty boasts two U.S. Fulbright Scholars. Having taught overseas, both of these professors have taken students to study abroad.

The campus offers students access to the latest technology. Thanks to a congressionally designated grant of \$400,000, the campus' six science labs were remodeled and renovated, a project completed in the fall of 2006. Computer networking, mobile distance education teaching stations and digital microscopes were part of the equipment purchases.

Renovation and remodeling of the Hamilton Roddis Memorial Library was completed in 2005. The renovated library includes a teaching lab, where students and faculty can upgrade their research skills, the Learning Center, which focuses on building and enhancing classroom skills, and small study areas where students can work together on team and group projects. The \$510,000 renovation project was funded in cooperation with Wood County, the City of Marshfield, the State of Wisconsin and a private donor.

University of Wisconsin-Richland

Address: 1200 Highway 14 West
Richland Center, WI 53581-1399

Phone: 608/647-6186

Website: <http://www.richland.uwc.edu>

Dean: Deborah B. Cureton, Ph.D

Board of Visitors Representative: Darlo Wentz

Student Government President: Jade Bolack

Municipal Partner(s): Richland County

Student Profile

Headcount Enrollment:

Full-time students:	259 (58%)
Part-time students:	191 (42%)
Students age 22+	99 (22%)
Students receiving financial aid	73%
Non-Credit Enrollments 2005-2006	2770

Connections: Top 3 High Schools for New Freshmen
Richland Center, River Valley, Ithaca

Top 3 UW System Transfer Destinations
Platteville, LaCrosse, Stevens Point

Instructional Profile

Faculty: 16 FTE
38% female
13% minority
75% with terminal degrees

Instructional Academic Staff: 4.7 FTE
47% female
0% minority

Local Foundational Support: \$82,000 in student scholarships; \$21,700 in campus support

Collaborative Initiatives: UW-Milwaukee College Connection; UW-Platteville pre-engineering; Academic Alliance program with Richland Center and River Valley High Schools.

UW-Richland, a 135 acre campus located in the rolling hills of Richland County, attracts students of all ages from around the world and across the street. International programs involve community members as host and mentor families, bringing a cosmopolitan, global atmosphere to the community.

Continuing education programs taught by UW-Richland faculty and staff attract people from the area to non-credit courses and to new ideas. Community members join in campus activities through the annual Richland Reads Program, Campus/Community Theatre, Campus Community Band, and more.

UW-Richland is unusual among the UW Colleges in offering housing with Campus View residential facilities for 120 students just across the street from the campus. These modern, convenient facilities house students through the summer as well as during the academic year. Summer programs are local, regional, statewide and international in scope. They include College for Kids, Pre-College, Wisconsin Teen Institute, Faculty College, Youth for Understanding, Japanese High School Program, Instructional Technology training and more.

Located on the UW-Richland campus, the Symons Recreation Complex is available to UW-Richland students through special memberships. This community facility features a heated indoor pool, weight training and fitness center, sauna, racquetball courts and fitness classes.

University of Wisconsin-Rock County

Address: 2909 Kellogg Avenue
Janesville, WI 53546-5699

Phone: 608/758-6566

Website: <http://www.rock.uwc.edu>

Dean: Diane Pillard

Board of Visitors Representative: Audrey McClellan

Student Government President: Caryn Zimmerman

Municipal Partner(s): Rock County

Student Profile

Headcount	Enrollment:		Connections: Top 3 High Schools for New Freshmen
	Full-time students:	496 (53%)	Janesville Parker, Janesville Craig, Beloit Memorial
	Part-time students:	434 (47%)	
	Students age 22+	359 (39%)	
	Students receiving financial aid	59%	Top 3 UW System Transfer Destinations
	Non-Credit Enrollments 2005-2006	867	Whitewater, Madison, Milwaukee

Instructional Profile

Faculty:	25 FTE	Instructional Academic Staff:	13.5 FTE
	34% female		54% female
	16% minority		0% minority
	80% with terminal degrees		

Local Foundational Support: \$28,150 in student scholarships; \$2,800 in faculty development

Collaborative Initiatives: Baccalaureate degree completion programs hosted on campus with UW-Milwaukee, Whitewater and Platteville.

UW-Rock County students get the small classes and personal attention of a private college at a public university cost. Average class size is 21 students, which allows students to receive the attention they need to succeed during the critical first two years of college. Top-notch professors are hired for their expertise in an area of study and for their dedication to teaching. The Learning Support Center offers free tutoring services and the TRIO program serves a select group of highly-motivated students who are seeking their college degree.

UW-Rock County includes state-of-the-art science laboratories and computer labs, multimedia and distance education classrooms, library, gymnasium and fitness room, cafe, bookstore, and theatre with seats for 225. Opportunities for student involvement include: Student Government Association, co-ed soccer, men's and women's basketball, women's volleyball, University Theatre, health sciences club, math club, Phi Theta Kappa honor society, noon lectures and films, a multicultural student organization, Future Educators Club, and Imagination Inc., the campus literary magazine.

Continuing Education provides classes and programs for the general public, K-12 students, local businesses and special interest groups. Programs provided for adults include art, computer training, personal enrichment, cultural travel, and a wide variety of online classes. Continuing Education also provides Colleges for Kids summer camps. Other community programs include theatre productions, the Rock Prairie Concert Band, Chamber Orchestra and Youth Orchestra, choir and the Performing Arts Series.

University of Wisconsin-Sheboygan

Address: One University Drive
Sheboygan, WI 53081-4789
Phone: 920/459-3633
Website: <http://www.sheboygan.uwc.edu>

Interim Dean: Mary Beth Emmerichs, Ph.D.
Board of Visitors Representative: Mark Hanna
Student Government President: Niles Schreurs
Municipal Partner(s): Sheboygan County

Student Profile

Headcount	Enrollment:		Connections: Top 3 High Schools for New Freshmen
	Full-time students:	392 (57%)	Sheboygan South, Sheboygan North, Plymouth Comprehensive
	Part-time students:	298(43%)	
	Students age 22+	225 (33%)	
	Students receiving financial aid	56%	Top 3 UW System Transfer Destinations
	Non-Credit Enrollments 2005-2006	1726	Milwaukee, Oshkosh, Green Bay

Instructional Profile

Faculty:	19 FTE	Instructional Academic Staff:	12.1 FTE
	25% female		37% female
	16% minority		10% minority
	79% with terminal degrees		

Local Foundational Support:	\$35,000+ in student scholarships; \$14,300 in campus support
Collaborative Initiatives:	Baccalaureate degree completion programs hosted on campus with UW-Milwaukee, Stout and Oshkosh; Credit outreach to Sheboygan North, Oostburg and Cedar Grove/Belgium high schools

UW-Sheboygan is located on a 70 acre hilltop setting overlooking the western edge of Sheboygan. In Fall 2007, the campus will unveil its newest addition to the campus, the Acuity Technology Center. The building, made possible by a major gift from Acuity of Sheboygan and support from Sheboygan County, will offer state-of-the-art instructional classrooms and new functional meeting space – all equipped with the latest in presentation and communication technology. In fall 2004, the campus also opened the new Frank G. and Frieda K. Brotz science Building, which features spacious classrooms fitted with the latest in lab equipment and instructional technology.

UW-Sheboygan offers a wide range of co-curricular opportunities. Students can choose to be active in campus government, music and drama, various academic and service clubs, and both intercollegiate and intramural sports. The campus includes a fine arts building with 350 seat theatre and a complete physical education facility. On the university grounds, students will find tennis courts, areas for field sports, and a natural-terrain cross-country track.

Continuing education offered through UW-Sheboygan provides opportunities for community members of all ages to continue their education in both credit and non-credit courses. Programs provided for adults include foreign languages, computer training, personal enrichment and opportunities for travel. High school students can take advantage of the Upward Bound college preparation program as well as credit outreach. The entire community is welcome to participate in theatre productions, wind ensemble and choir concerts, lecture and fine arts events, and more.

University of Wisconsin-Washington County

Address: 400 University Drive
West Bend, WI 53095-3699
Phone: 262/335-5200
Website: <http://www.washington.uwc.edu>

Dean: David Nixon, Ph.D
Board of Visitors Representative: Ray Werhand
Student Government President: Matthew Rismeyer
Municipal Partner(s): Washington County and City of West Bend

Student Profile

Headcount	Enrollment:		Connections: Top 3 High Schools for New Freshmen
	Full-time students:	638 (66%)	West Bend West, Hartford Union, West Bend East
	Part-time students:	329(34%)	
	Students age 22+	242(25%)	
	Students receiving financial aid	47%	Top 3 UW System Transfer Destinations
			Milwaukee, Oshkosh, Whitewater
	Non-Credit Enrollments		
	2005-2006	2245	

Instructional Profile

Faculty:	26 FTE	Instructional Academic Staff:	12 FTE
	35% female		24% female
	12% minority		10 minority
	89% with terminal degrees		

Local Foundational Support: \$10,500 in student scholarships; \$2,100 in campus support
Collaborative Initiatives: Four baccalaureate degree completion programs with UW-Milwaukee and one with UW-Oshkosh

UW-Washington County is located on 87 scenic acres on the southwest side of West Bend. All buildings are inter-connected and include a recently added science hall with state-of-the-art labs and equipment. Talented and dedicated faculty who teach, engage in research, and share their talents through public service help ensure the success of UW-Washington County students.

Student organizations and activities are especially vibrant and active on campus. Students can choose from campus government, a variety of academic and professional clubs, honors and service organizations, and the student newspaper. An active sports program includes both varsity and intramural sports. Campus-wide activities include "Wassup Wednesdays" featuring student entertainment during the noon hour as well as annual events such as Earth Day, Chemistry Week and Wildcat Week. Over \$125,000 in annual scholarships are available to students as well as a growing internship program, thanks to strong community support.

The Moraine Chorus, Moraine Symphonic Orchestra, and campus theatrical productions combine the talents of UW-Washington County students and community members. Other community events include the Fine Arts Series and a lecture series. An active Continuing Education program provides non-credit opportunities for lifelong learning. Seminars on grant-writing, credit reports, living wills, non-profit workshops and resume writing are just a few of the many courses available.

University of Wisconsin-Waukesha

Address: 1500 N. University Drive
Waukesha, WI 53188-2799

Phone: 262/521-5040

Website: <http://www.waukesha.uwc.edu>

Dean: Patrick Schmitt, Ph.D.

Board of Visitors Representative: Russell Launder

Student Government President: Alan Stager

Municipal Partner(s): City and County of Waukesha

Student Profile

Headcount	Enrollment:		Connections: Top 3 High Schools for New Freshmen
	Full-time students:	1169 (58%)	Arrowhead, Kettle Moraine, Mukwonago,
	Part-time students:	851 (42%)	
	Students age 22+	570 (28%)	Top 3 UW System Transfer Destinations
	Students receiving financial aid	46%	Milwaukee, Whitewater, Madison
	Non-Credit Enrollments 2005-2006	1835	

Instructional Profile

Faculty:	45 FTE	Instructional Academic Staff:	25.9 FTE
	35% female		49% female
	18% minority		4% minority
	85% with terminal degrees		

Local Foundational Support:	\$27,700 in student scholarships; \$6,000 in campus support
Collaborative Initiatives:	Three collaborative baccalaureate degree programs with UW-Milwaukee and one with Oshkosh; one MBA program with UW-Milwaukee and one with Whitewater

UW-Waukesha is located on the east edge of Waukesha, a short drive from Milwaukee. The campus features a 92 acre field station located 10 miles to the west. Formerly a farm, this educational facility, complete with classrooms and greenhouse, is being restored to native flora and fauna. The field station is also home to a unique 450 cubic foot wood-fired kiln modeled after the ancient Japanese Anagama kiln. It is the only one of its kind in the UW System.

There are many opportunities for students to participate in co-curricular activities. Student clubs span a broad range, including such interests as anime, ecology, film, philosophy, and yoga. Other student activities include noon-time entertainment, movie/video nights, fall fest and spring fling. Students may also join with faculty members in "Immersion Excursion," venturing out into the community on service field trips. Another opportunity for faculty-student collaboration is in the area of research projects. In recent years there have been a wide variety of topics ranging from "The Effects of Exercise on Cancer Recovery" to "Moral Luck." After completion, results of the research are presented at a public symposium.

The faculty and staff of UW-Waukesha are committed to helping students succeed. The campus Study Center was developed for this purpose and provides tutors in Mathematics, English and other subjects, peer mentors and group study. The Study Center is also home to the federally funded TRIO Student Support Services Program for students who are low income, first-generation college students or who have special needs.

University of Wisconsin Colleges Online

Director: Barbara Stinson
 Website: <http://www.online.uwc.edu>
 Toll free phone: 877-449-1877
 email contacts: academicadvisor@uwc.edu
helpdesk@uwc.edu

Student Profile

Headcount Enrollment:

Full-time students:	286 (29%)
Part-time students:	687 (71%)
Students age 22+	691 (71%)
Students receiving financial aid*	11%

*students taking both online and on-campus courses and who receive financial aid through the campus are not included in this number

UWC Online Enrollment History

Semester	Headcount	FTE	% Change in FTE
Fall 1999	33	10.5	
2000	107	28.4	170%
2001	151	43.5	53%
2002	234	71.2	64%
2003	460	140.6	97%
2004	534	174.5	24%
2005	695	226.2	30%
2006	973	300.2	33%

Instructional Profile

Faculty: 14 teaching 18 sections
 29% female
 21% minority

Instructional Academic Staff: 29 teaching 41 sections
 38% female
 7% minority

UWC Online Degree Completion and Other Collaborative Partners

**BSN@HOME, BSN-LINC, UW-Platteville, UW-Stevens Point, UW-Stout, UW-Superior
 UW-Whitewater, CESA 10, Viterbo University, WiscNet, and UW-Learning Innovations**

UW Colleges Online is fully accredited to deliver the UW Colleges Associate of Arts and Science degree entirely online. Having begun in fall 1998 offering three classes, the UW Colleges Online has grown tremendously. In fall 2006 UWC Online offered 33 courses with 58 different course sections, a headcount enrollment of 973 students, and an fte enrollment of 300. As of September 2006, 52 students had been awarded their AAS degree from UWC Online.

Students taking UW Colleges Online courses generally fit into one of three categories: students pursuing a degree and taking courses exclusively online; on-campus students pursuing a degree through one of the 13 UWC campuses, and supplementing their on-campus curriculum with online courses; and special students. This last category includes students pursuing degrees outside the UW Colleges, high school students enrolling in college level courses before graduation, and those taking courses for other reasons.

UWC Online functions very much like a virtual 14th campus, offering courses from the UW Colleges catalog taught by the same instructors who teach students in the UWC campus classrooms. The courses offered are each adapted to the online teaching and learning environment with the assistance of qualified instructional technologists. UW Colleges Online is actively involved in institution-wide initiatives such as assessment of student learning and the Foundations of Excellence project, and has partnered with UW Extension Outreach and eLearning in the Adult Access Initiative under the guidance of the Provost's office.